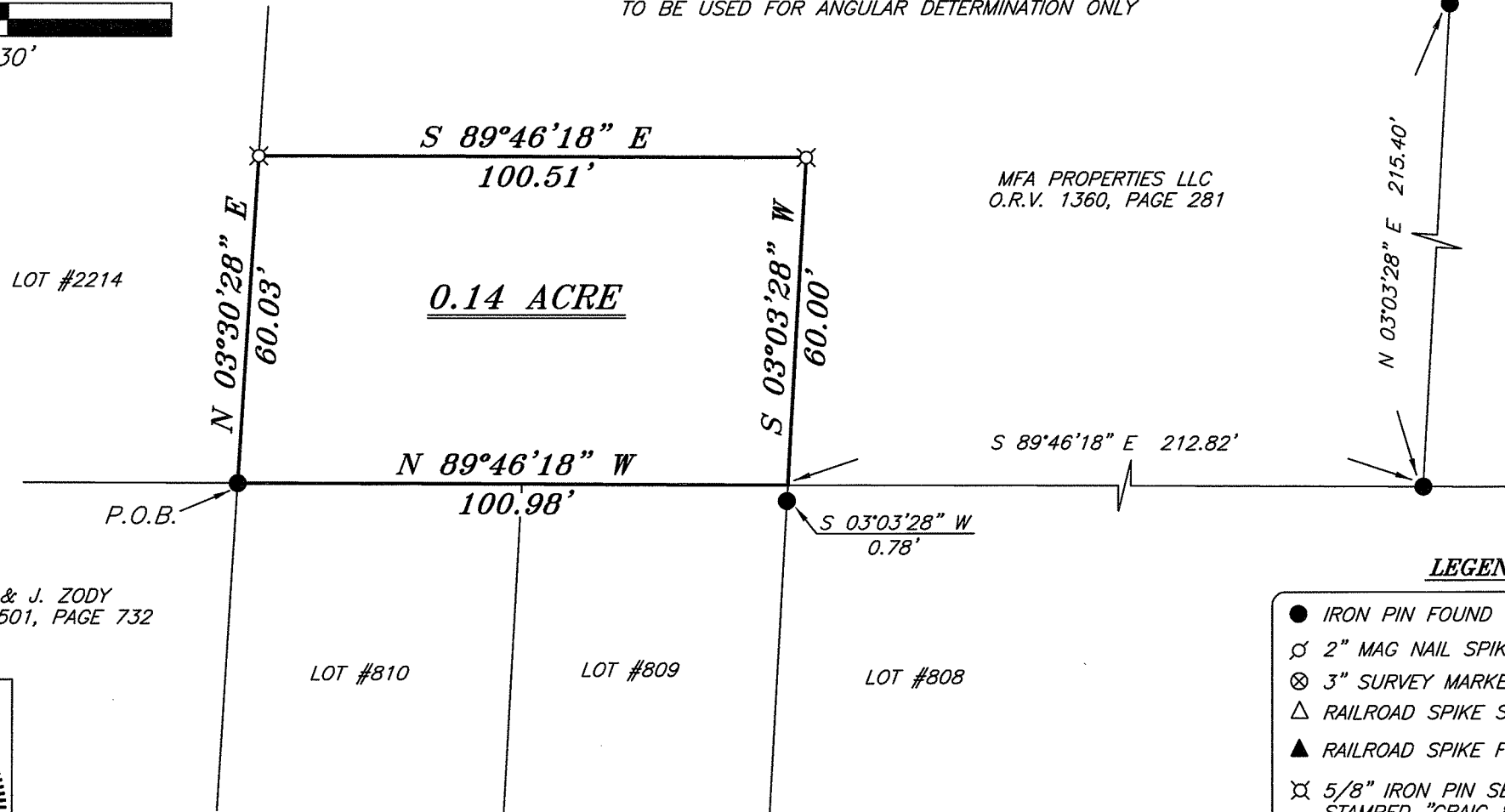
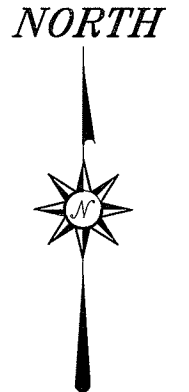


BEARINGS ARE BASED ON SURVEY V-135 ON FILE AT THE RICHLAND COUNTY TAX MAP OFFICE AND ARE INTENDED TO BE USED FOR ANGULAR DETERMINATION ONLY



MFA PROPERTIES LLC
O.R.V. 1360, PAGE 281

A. & J. ZODY
O.R.V. 501, PAGE 732



Chad F. Craig

SURVEY BY: CHAD F. CRAIG P.S. #8195
for SEILER & CRAIG SURVEYING INC.
52-1/2 NORTH MAIN STREET
MANSFIELD, OHIO 44902
(419) 525-3644
FAX (419) 525-3696

LEGEND

- IRON PIN FOUND
- ⊙ 2" MAG NAIL SPIKE SET
- ⊗ 3" SURVEY MARKER SET
- △ RAILROAD SPIKE SET
- ▲ RAILROAD SPIKE FOUND
- ⊗ 5/8" IRON PIN SET WITH CAP STAMPED "CRAIG 8195"

NEW SPLIT
RICHLAND COUNTY.
TAX MAP OFFICE
EAK 8-18-11
INITIAL DATE
CC-157

SURVEY PLAT FOR BODINE	
PART NE QTR. SEC. 24, T-21, R-19 CITY OF ONTARIO RICHLAND COUNTY, OHIO	
DATE: AUGUST 12, 2011	SCALE: 1"=30'
FRIDAY_LANE_1652	

SEILER & CRAIG SURVEYING, INC.

Douglas C. Seiler, PS & Chad F. Craig, PS
52 1/2 North Main Street
Mansfield, Ohio 44902
419-525-3644 Fax 419-525-3696
www.seilerandcraig.com

SURVEY DESCRIPTION

**PART OF THE NE QUARTER OF SECTION 24
CITY OF ONTARIO
RICHLAND COUNTY, OHIO**

Situated in the City of Ontario, County of Richland, State of Ohio and being a part of the Northeast Quarter of Section 24, of Township 21 North, Range 19 West, and being more particularly described as follows:

Beginning for the same at an iron pin found and accepted as marking the northwest corner of Lot #810 and the southeast corner of Lot #2214 in said city, the same being the northeast corner of a parcel currently owned by A. and J. Zody (O.R.V. 501, Pg. 732); Thence, North 03 degrees 30 minutes 28 seconds East with the east line of Lot #2214, a distance of 60.03 feet to an iron pin set;

Thence, South 89 degrees 46 minutes 18 seconds East a distance of 100.51 feet to an iron pin set;

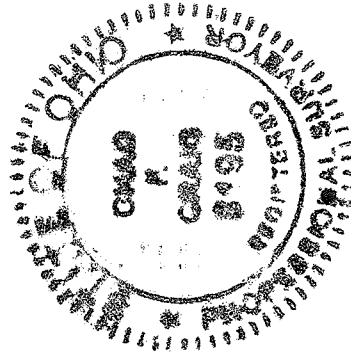
Thence, South 03 degrees 03 minutes 28 seconds West a distance of 60.00 feet to the northeast corner of Lot #809, said corner being referenced by an iron pin found on a bearing of South 03 degrees 03 minutes 28 seconds West and at a distance of 0.78 feet;

Thence, North 89 degrees 46 minutes 18 seconds West with the north line of said lot and the westerly prolongation thereof, a distance of 100.98 feet to the place of beginning, containing 0.14 acres according to survey by Chad F. Craig P.S. #8195 for Seiler & Craig Surveying, Inc. on August 12, 2011, but subject to all easements of record.

Iron pins set are 5/8" rods with caps stamped "CRAIG 8195".

Bearings are based on Survey V-135 on file at the Richland County Tax Map Office and are intended to be used for angular determination only.

The grantees, his heirs and assigns do hereby covenant and agree that the parcel of land described in this instrument or any portion thereof does not constitute a principal building site under applicable zoning and will not be conveyed by said grantees, heirs and assigns independent and separate from any adjoining or contiguous parcel fronting on a public highway or street.



Chad F. Craig

Chad F. Craig P.S. #8195
for Seiler & Craig Surveying, Inc.

NEW SPLIT
RICHLAND COUNTY
TAX MAP OFFICE

INITIAL **EA**
DATE **8-18-11**

CC-157