



SCALE: 1" = 200'

CURVE	RADIUS	DELTA ANGLE	ARC LENGTH	CHORD BEARING	CHORD LENGTH
C1	184.95'	31°08'50"	100.54'	S 89°45'47" E	99.31'
C2	140.93'	95°48'38"	235.66'	N 57°54'19" E	209.15'
C3	184.83'	50°49'49"	163.97'	N 35°24'54" E	158.65'

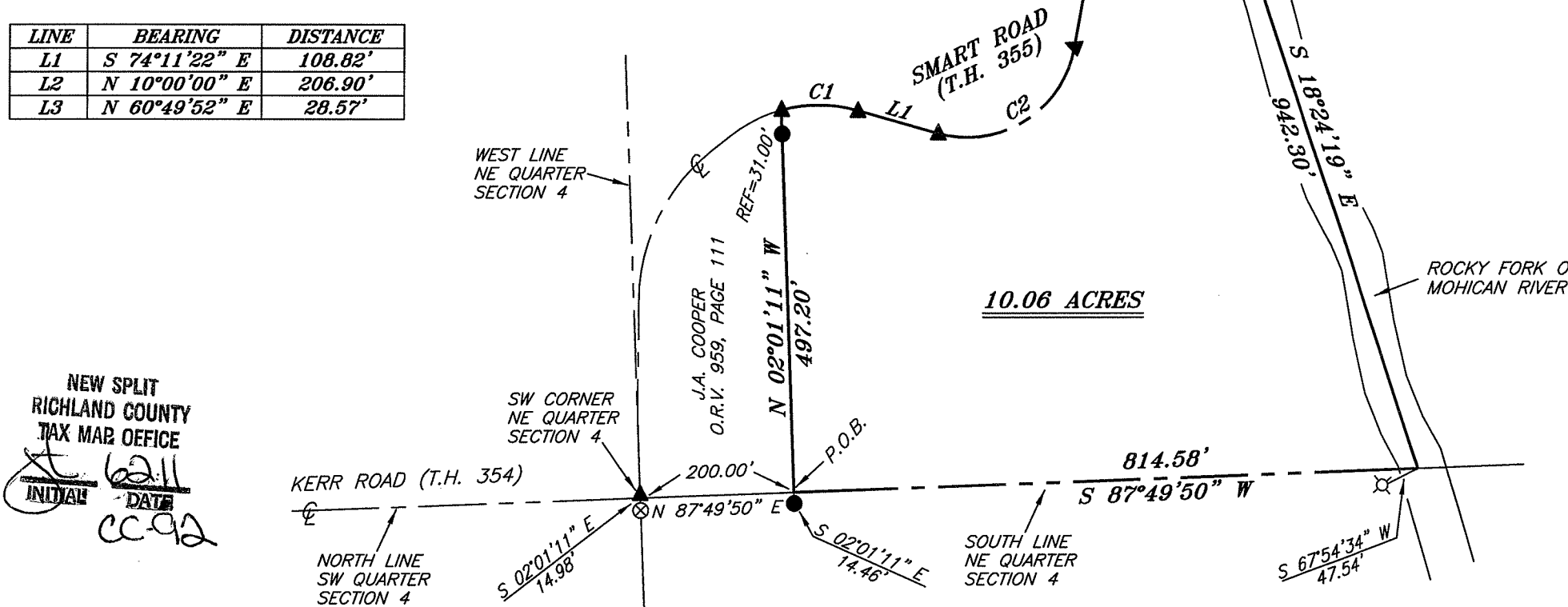
LINE	BEARING	DISTANCE
L1	S 74°11'22" E	108.82'
L2	N 10°00'00" E	206.90'
L3	N 60°49'52" E	28.57'

NORTH



M.D. COOPER
O.R.V. 499, PAGE 515

BEARINGS ARE BASED ON CENTERLINE PLANS TWP-5 ON FILE AT THE RICHLAND COUNTY TAX MAP OFFICE, AND ARE INTENDED TO BE USED FOR ANGULAR DETERMINATION ONLY



LEGEND

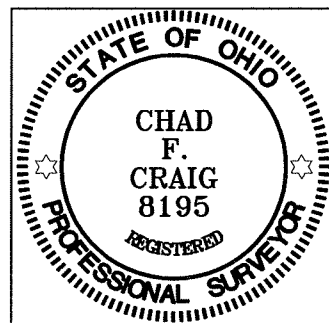
- IRON PIN FOUND
- ⊗ 3" SURVEY SPIKE FOUND
- 2" MAG NAIL SPIKE FOUND
- △ RAILROAD SPIKE SET
- ▲ RAILROAD SPIKE FOUND
- ⊗ 5/8" IRON PIN SET WITH CAP STAMPED "CRAIG 8195"

NEW SPLIT
RICHLAND COUNTY
TAX MAP OFFICE

INITIAL DATE
CC 02

Chad F. Craig

SURVEY BY: CHAD F. CRAIG P.S. #8195
for SEILER & CRAIG SURVEYING INC.
52-1/2 NORTH MAIN STREET
MANSFIELD, OHIO 44902
(419) 525-3644
FAX (419) 525-3696



E. & B. KURTZ
D.V. 781, PAGE 143

Scott Sand

SURVEY PLAT FOR
COOPER

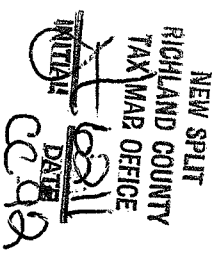
PART NE QTR. OF SECTION 4, T-22, R-17
MONROE TOWNSHIP
RICHLAND COUNTY, OHIO

DATE: MAY 11, 2011 SCALE: 1"=200'

SMARTRD_COOPER

SEILER & CRAIG SURVEYING, INC.

Douglas C. Seiler, PS & Chad F. Craig, PS
52 1/2 North Main Street
Mansfield, Ohio 44902
419-525-3644 Fax 419-525-3696
www.seilerandcraig.com



PART NE QUARTER SECTION 4
MONROE TOWNSHIP
RICHLAND COUNTY, OHIO

Situated in the Township of Monroe, County of Richland, State of Ohio and being a part of the northeast Quarter of Section 4, of Township 22 North, Range 17 West, and being more particularly described as follows:

Commencing at a railroad spike found and accepted as marking the southwest corner of said quarter, Thence, North 87 degrees 49 minutes 50 seconds East with the south line of said quarter a distance of 200.00 feet to a point, referenced by an iron pin found on a bearing of South 02 degrees 01 minutes 11 seconds East and at a distance of 14.46 feet, the place of beginning of the parcel herein described;

Thence, North 02 degrees 01 minutes 11 seconds West passing through an iron pin found for reference at a distance of 466.20, a total distance of 497.20 feet to a railroad spike found in the centerline of Smart Road (T.H. 355);

Thence, with said centerline the following six (6) courses and distances:

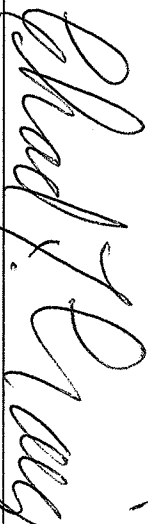
1. With a curve to the right, having a central angle of 31 degrees 08 minutes 50 seconds, a radius of 184.95 feet, and arc length of 100.54 feet, a chord bearing of South 89 degrees 45 minutes 47 seconds East and a chord length of 99.31 feet to a railroad spike found;
2. South 74 degrees 11 minutes 22 seconds East a distance of 108.82 feet to a railroad spike found;
3. With a curve to the left, having a central angle of 95 degrees 48 minutes 38 seconds, a radius of 140.93 feet, and arc length of 235.66 feet, a chord bearing of North 57 degrees 54 minutes 19 seconds East and a chord length of 209.15 feet to a railroad spike found;
4. North 10 degrees 00 minutes 00 seconds East a distance of 206.90 feet to a 2 inch Mag Nail spike found;
5. With a curve to the right, having a central angle of 50 degrees 49 minutes 49 seconds, a radius of 184.83 feet, and arc length of 163.97 feet, a chord bearing of North 35 degrees 24 minutes 54 seconds East and a chord length of 158.65 feet to a 2 inch Mag Nail Spike found;
6. North 60 degrees 49 minutes 52 seconds East a distance of 28.57 feet to a point in The Rocky Fork of Mohican River, referenced by an iron pin set on a bearing of North 85 degrees 12 minutes 04 seconds West and at a distance of 45.95 feet;

Thence, South 18 degrees 24 minutes 19 seconds East with said river a distance of 942.30 feet to a point on the south line of said quarter, referenced by an iron pin set on a bearing of South 67 degrees 54 minutes 34 seconds West and at a distance of 47.54 feet;

Thence, South 87 degrees 49 minutes 50 seconds West with the south line of said quarter a distance of 814.58 feet to the place of beginning, containing 10.06 acres, according to survey by Chad F. Craig, Professional Surveyor #8195 for Seiler & Craig Surveying, Inc., on May 11, 2011, but subject to all easements and right of ways of record.

Iron pins set are 5/8" rods with caps stamped "CRAIG 8195".

Bearings are based on centerline plans TWP-5 on file at the Richland County Tax Map Office and are intended to be used for angular determination only.


Chad F. Craig PS #8195
for Seiler & Craig Surveying, Inc.