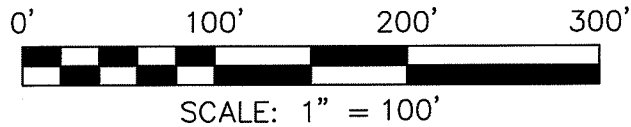


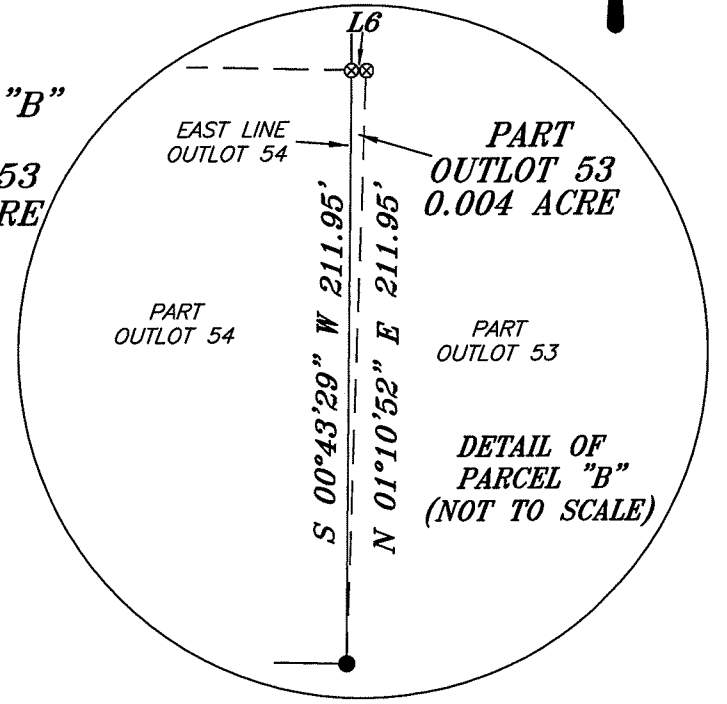
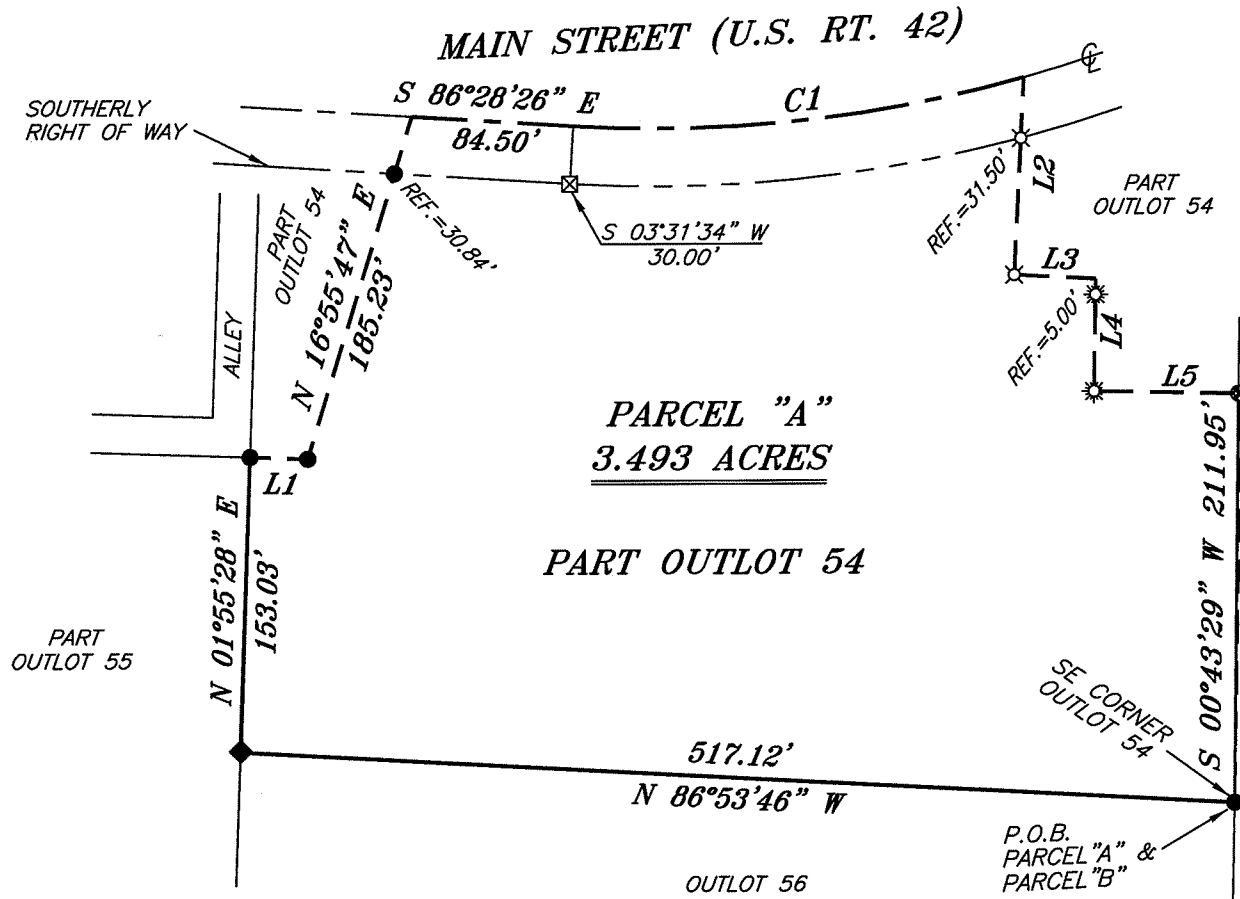
CURVE	RADIUS	DELTA ANGLE	ARC LENGTH	CHORD BEARING	CHORD LENGTH
C1	716.20'	18°53'02"	236.05'	N 84°05'03" E	234.98'



NORTH

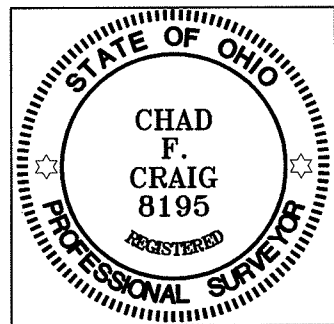


LINE	BEARING	DISTANCE
L1	S 88°04'32" E	30.00'
L2	S 02°48'13" W	102.36'
L3	S 86°54'03" E	42.69'
L4	S 00°57'31" W	58.19'
L5	S 88°51'48" E	75.28'
L6	N 88°51'48" W	1.69'



NEW SPLIT
 RICHLAND COUNTY
 TAX MAP OFFICE
 EAK 4-4-11
 INITIAL DATE
 CC-49

Chad F. Craig
 SURVEY BY: CHAD F. CRAIG P.S. #8195
 for SEILER & CRAIG SURVEYING INC.
 52-1/2 NORTH MAIN STREET
 MANSFIELD, OHIO 44902
 (419) 525-3644
 FAX (419) 525-3696



- LEGEND**
- IRON PIN FOUND
 - ⊗ CHISELED "X" IN CONCRETE
 - ⊗ 3 INCH SURVEY SPIKE SET
 - ⊗ DRILL HOLE SET
 - ◆ ANGLE IRON FOUND
 - ⊗ 5/8" IRON PIN SET WITH CAP STAMPED "CRAIG 8195"

BEARINGS ARE BASED ON SURVEY F-1-136 ON FILE AT THE RICHLAND COUNTY TAX MAP OFFICE AND ARE INTENDED TO BE USED FOR ANGULAR DETERMINATION ONLY

SURVEY PLAT FOR	
INFIELD	
PART OUTLOTS 53 & 54	
VILLAGE OF LEXINGTON	
RICHLAND COUNTY, OHIO	
DATE: MARCH 21, 2011	SCALE: 1"=100'
INFIELD	

SEILER & CRAIG SURVEYING, INC.

Douglas C. Seiler, PS & Chad F. Craig, PS
52 1/2 North Main Street
Mansfield, Ohio 44902
419-525-3644 Fax 419-525-3696
www.seilerandcraig.com

NEW SPLIT
RICHLAND COUNTY
TAX MAP OFFICE

PAK 4-4-11
INITIAL DATE
CC-49

**SURVEY DESCRIPTION
PARCEL "A"**

PART OUTLOT 54
VILLAGE OF LEXINGTON,
RICHLAND COUNTY, OHIO

Situated in the Village of Lexington, County of Richland, State of Ohio and being known as part of Outlot #54, and being more particularly described as follows:

Beginning for the same at an iron pin found and accepted as marking the southeast corner of Outlot #54, Thence, North 86 degrees 53 minutes 46 seconds West with the south line of said outlot a distance of 517.12 feet to an angle iron found marking the southwest corner thereof;

Thence, North 01 degree 55 minutes 28 seconds East with the west line of said outlot a distance of 153.03 feet to an iron pin found;

Thence, South 88 degrees 04 minutes 32 seconds East a distance of 30.00 feet to an iron pin found;

Thence, North 16 degrees 55 minutes 47 seconds East passing through an iron pin found at a distance of 154.39 feet, a total distance of 185.23 feet to a point in the centerline of Main Street (U.S. Route 42);

Thence, South 86 degrees 28 minutes 26 seconds East with said centerline a distance of 84.50 feet to a point referenced by a chiseled "x" in concrete set on a bearing of South 03 degrees 31 minutes 34 seconds West a distance of 30.00 feet;

Thence, with said centerline and with a curve to the left having a central angle of 18 degrees 53 minutes 02 seconds, a radius of 716.20 feet, an arc length of 236.05 feet, a chord bearing of North 84 degrees 05 minutes 03 seconds East, and a chord distance of 234.98 feet to a point referenced by an iron pin set on a bearing of South 02 degrees 48 minutes 13 seconds West a distance of 31.50 feet;

Thence, South 02 degrees 48 minutes 13 seconds West passing through said iron pin set a total distance of 102.36 feet to an iron pin set;

Thence, South 86 degrees 54 minutes 03 seconds East a distance of 42.69 feet to a point referenced by a drill hole set on a bearing of South 00 degrees 57 minutes 31 seconds West a distance of 5.00 feet;


Thence, South 00 degrees 57 minutes 31 seconds West passing through said drill hole set a total distance of 58.19 feet to a drill hole set;

Thence, South 88 degrees 51 minutes 48 seconds East a distance of 75.28 feet to a 3 inch survey spike set on the east line of Outlot 54;

Thence, South 00 degree 43 minutes 29 seconds West with the said east line a distance of 211.95 feet to the place of beginning, containing 3.493 acres, according to survey by Chad F. Craig P.S. #8195 for Seiler and Craig Surveying, Inc. on March 21, 2011, but subject to all right of ways and easements of record.

Iron pins set are 5/8" rods with caps stamped "CRAIG 8195".

Bearings are based on survey F-1-136 on file at the Richland County Tax Map Office and are intended to be used for angular determination only.



Chad F. Craig P.S. #8195
for Seiler and Craig Surveying, Inc.

SEILER & CRAIG SURVEYING, INC.

Douglas C. Seiler, PS & Chad F. Craig, PS

52 1/2 North Main Street

Mansfield, Ohio 44902

419-525-3644 Fax: 419-525-3696

www.seilerandcraig.com

**SURVEY DESCRIPTION
PARCEL "B"**

PART OUTLOT 53
VILLAGE OF LEXINGTON,
RICHLAND COUNTY, OHIO

Situated in the Village of Lexington, County of Richland, State of Ohio and being known as part of Outlot #53, and being more particularly described as follows:

Beginning for the same at an iron pin found and accepted as marking the southeast corner of Outlot #54, the same as being a point on the west line of Outlot 53, Thence, North 01 degrees 10 minutes 52 seconds East a distance of 211.95 feet to a 3 inch survey spike set;

Thence, North 88 degrees 51 minutes 48 seconds West a distance of 1.69 feet to a 3 inch survey spike set on the east line of Outlot 54;

Thence, South 00 degree 43 minutes 29 seconds West with the said east line a distance of 211.95 feet to the place of beginning, containing 0.004 acres, according to survey by Chad F. Craig P.S. #8195 for Seiler and Craig Surveying, Inc. on March 21, 2011, but subject to all right of ways and easements of record.

Iron pins set are 5/8" rods with caps stamped "CRAIG 8195".

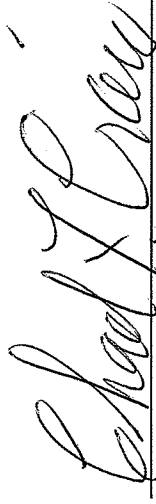
Bearings are based on survey F-1-136 on file at the Richland County Tax Map Office and are intended to be used for angular determination only.

The grantees, his heirs and assigns do hereby covenant and agree that the parcel of land described in this instrument or any portion thereof does not constitute a principal building site under applicable zoning and will not be conveyed by said grantees, heirs and assigns independent and separate from any adjoining or contiguous parcel fronting on a public highway or street.

NEW SPLIT
RICHLAND COUNTY
TAX MAP OFFICE

PAK 4-11-11
INITIAL DATE

CC-49



Chad F. Craig P.S. #8195
for Seiler and Craig Surveying, Inc.