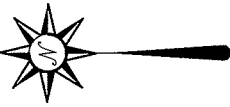


NORTH

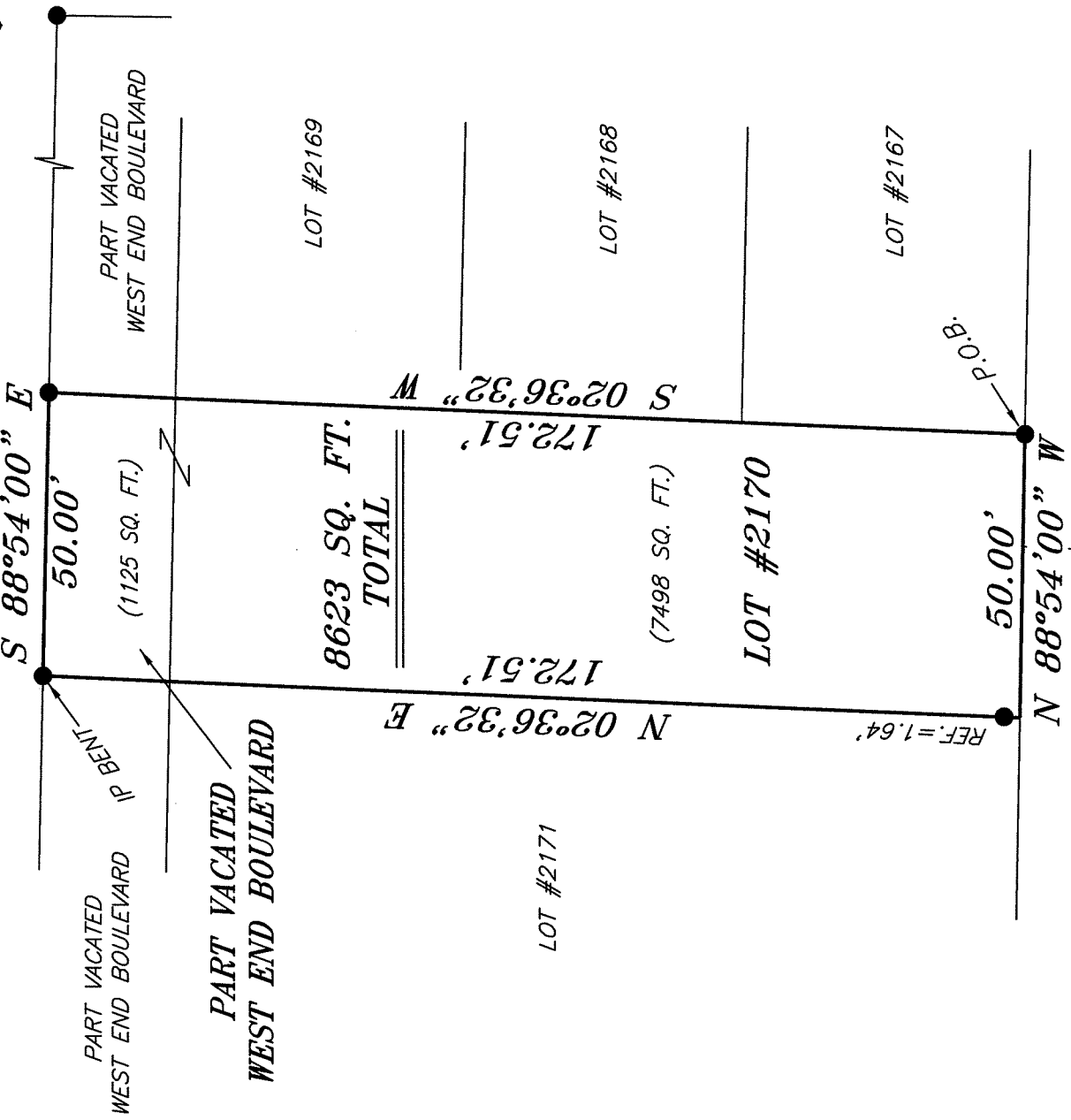


SCALE: 1" = 30'

BEARINGS ARE BASED ON SURVEY W-146 ON FILE AT THE RICHLAND COUNTY TAX MAP OFFICE AND ARE INTENDED TO BE USED FOR ANGULAR DETERMINATION ONLY



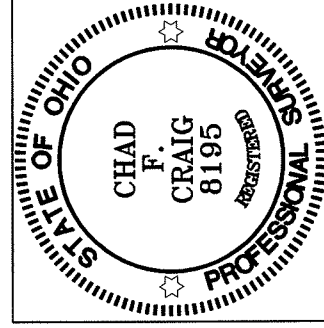
WEST END BOULEVARD 80' R/W



R. & T. CONN
O.R.V. 1514, PAGE 470

D. & S. RAMSEY
O.R.V. 817, PAGE 685

NEW SURVEY
OF EXISTING PARCEL
RICHLAND COUNTY
TAX MAP OFFICE
EAK INITIAL DATE
3-25-11
CC-44



- LEGEND**
- IRON PIN FOUND
 - ⊗ 2" MAG NAIL SPIKE SET
 - △ RAILROAD SPIKE SET
 - ▲ RAILROAD SPIKE FOUND
 - ⊗ 5/8" IRON PIN SET WITH CAP STAMPED "CRAIG 8195"

SURVEY PLAT FOR	
CHRISTY	
LOT #2170 & PT. VACATED WEST END BLVD. CITY OF SHELBY RICHLAND COUNTY, OHIO	
DATE: MARCH 18, 2011	SCALE: 1"=30'
WESTEND_BLDV_13	

Chad F. Craig

SURVEY BY:
CHAD F. CRAIG P.S. #8195
for SELLER & CRAIG SURVEYING INC.
52-1/2 NORTH MAIN STREET
MANSFIELD, OHIO 44902
(419) 525-3644
FAX (419) 525-3696

SEILER & CRAIG SURVEYING, INC.

Douglas C. Seiler, PS & Chad F. Craig, PS

52 1/2 North Main Street

Mansfield, Ohio 44902

419-525-3644 Fax: 419-525-3696

www.seilerandcraig.com

SURVEY DESCRIPTION

PART #2170 & PART VACATED WEST END BOULEVARD

**CITY OF SHELBY,
RICHLAND COUNTY, OHIO**

Situated in the City of Shelby, County of Richland, State of Ohio and being known as Lot #2170 of the consecutively numbered lots in said city, and part of a vacated West End Boulevard, and being more particularly described as follows:

Beginning for the same at an iron pin found and accepted as marking the southeast corner of Lot #2170, Thence North 88 degrees 54 minutes 00 seconds West with the south line of said lot a distance of 50.00 feet to a point marking the southwest corner thereof, referenced by an iron pin found on a bearing of North 02 degrees 36 minutes 32 seconds East a distance of 1.64 feet;

Thence, North 02 degrees 36 minutes 32 seconds East with the west line of said lot and the northerly prolongation thereof and passing through said iron pin found a total distance of 172.51 feet to an iron pin found (bent);

Thence, South 88 degrees 54 minutes 00 seconds East a distance of 50.00 feet to an iron pin found;

Thence, South 02 degrees 36 minutes 32 seconds West a distance of 172.51 feet to the place of beginning, containing a total of 8623 square feet, of which 7498 square feet are located in Lot #2170 and 1125 square feet are located within part of a vacated West End Boulevard, according to survey by Chad F. Craig P.S. #8195 for Seiler and Craig Surveying, Inc. on March 18, 2011, but subject to all right of ways and easements of record.

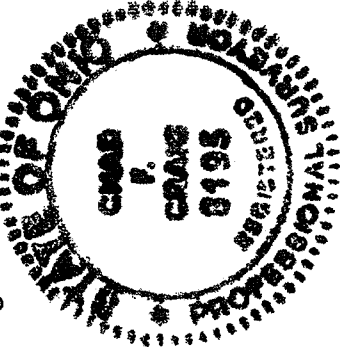
Iron pins set are 5/8" rods with caps stamped "CRAIG 8195".

Bearings are based on survey W-146 on file at the Richland County Tax Map Office and are intended to be used for angular determination only.

NEW SURVEY
OF EXISTING PARCEL
RICHLAND COUNTY
TAX MAP OFFICE

EAK 3-25-11
INITIAL DATE

CC-44



Chad F. Craig

Chad F. Craig P.S. #8195
for Seiler and Craig Surveying, Inc.