

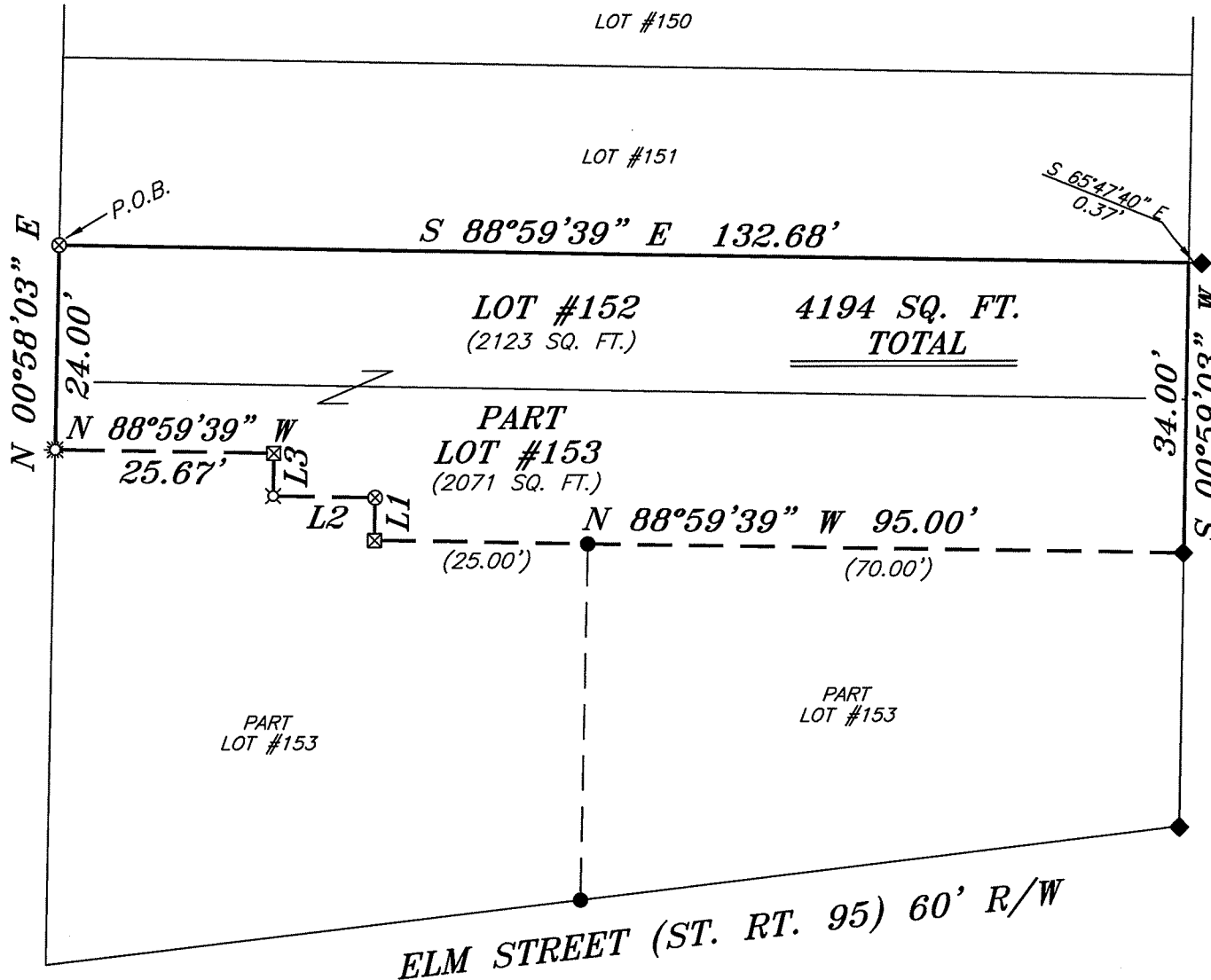
NORTH



SCALE: 1" = 20'

INDEPENDENCE ALLEY

MAIN STREET 66' R/W

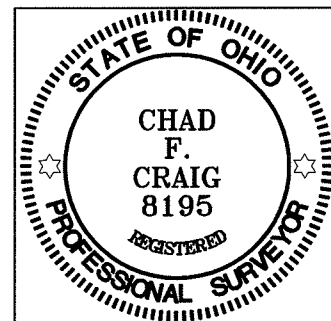


LINE	BEARING	DISTANCE
L1	N 00°58'03" E	5.00'
L2	N 88°59'39" W	12.00'
L3	N 00°58'03" E	5.00'

**LEGEND**

- IRON PIN FOUND
- ⊗ 3" SURVEY SPIKE SET
- ☼ DRILL HOLE SET
- ◆ BUILDING CORNER
- ⊠ CHISELED "X" IN CONCRETE SET
- ⊗ 5/8" IRON PIN SET WITH CAP STAMPED "CRAIG 8195"

NEW SURVEY  
 OF EXISTING PARCEL  
 RICHLAND COUNTY  
 TAX MAP OFFICE  
 EAK 3-25-11  
 INITIAL DATE  
 CC-43



BEARINGS ARE BASED ON AN ASSUMED  
 MERIDIAN AND ARE INTENDED TO BE  
 USED FOR ANGULAR DETERMINATION ONLY

SURVEY BY: *Chad F. Craig*  
 CHAD F. CRAIG P.S. #8195  
 for SEILER & CRAIG SURVEYING INC.  
 52-1/2 NORTH MAIN STREET  
 MANSFIELD, OHIO 44902  
 (419) 525-3644  
 FAX (419) 525-3696

SURVEY PLAT FOR	
PROPERTY TRANSFER	
LOT #152 & PART LOT #153	
VILLAGE OF BUTLER	
RICHLAND COUNTY, OHIO	
DATE: MARCH 15, 2011	SCALE: 1"=20'
DAVIES BUTLER	

**SEILER & CRAIG SURVEYING, INC.**

Douglas C. Seiler, PS & Chad F. Craig, PS  
52 1/2 North Main Street  
Mansfield, Ohio 44902  
419-525-3644 Fax 419-525-3696  
www.seilerandcraig.com

**SURVEY DESCRIPTION**

LOT #152 & PART LOT #153  
VILLAGE OF BUTLER,  
RICHLAND COUNTY, OHIO

Situated in the Village of Butler, County of Richland, State of Ohio and being known as Lot #152 and part of Lot #153 of the consecutively numbered lots in said Village, and being more particularly described as follows:

Beginning for the same at a 3 inch survey spike set marking the northwest corner of Lot #152, Thence, South 88 degrees 59 minutes 39 seconds East with the north line of said lot a distance of 132.68 feet to a point on the east line of said lot, referenced by a building corner on a bearing of South 65 degrees 47 minutes 40 seconds East a distance of 0.37 feet;

Thence, South 00 degrees 59 minutes 03 seconds West with said east line and the southerly prolongation thereof a distance of 34.00 feet to a building corner marking a point on the east line of Lot #153;

Thence, North 88 degrees 59 minutes 39 seconds West and passing through an iron pin found at a distance of 70.00 feet, a total distance of 95.00 feet to a chiseled "X" in concrete set;

Thence, North 00 degrees 58 minutes 03 seconds East a distance of 5.00 feet to a 3 inch survey spike set;

Thence, North 88 degrees 59 minutes 39 seconds West a distance of 12.00 feet to an iron pin set;

Thence, North 00 degrees 58 minutes 03 seconds East a distance of 5.00 feet to a chiseled "X" in concrete set;

Thence, North 88 degrees 59 minutes 39 seconds West a distance of 25.67 feet to a drill hole set on the west line of Lot #153;

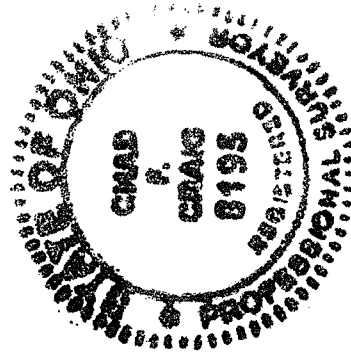
Thence, North 00 degrees 58 minutes 03 seconds East with the west line of said lot and the northerly prolongation thereof a distance of 24.00 feet to the place of beginning, containing a total of 4194 square feet of which 2123 square feet are located in Lot #152 and 2071 square feet are located in Part Lot #153 according to survey by Chad F. Craig P.S. #8195 for Seiler and Craig Surveying, Inc. on March 16, 2011 but subject to all easements and right of ways of record.

Iron pins set are 5/8" rods with caps stamped "CRAIG 8195".

Bearings are based on an assumed meridian and are intended to be used for angular determination only

NEW SURVEY  
OF EXISTING PARCEL  
RICHLAND COUNTY  
TAX MAP OFFICE

FAX 3-25-11  
INITIAL DATE  
CC-43



*Chad F. Craig*

Chad F. Craig P.S. #8195  
Seiler and Craig Surveying, Inc.