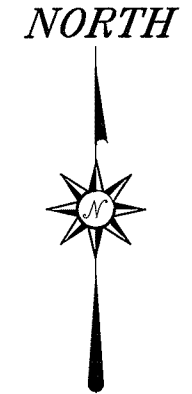
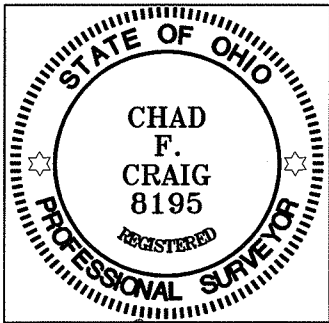
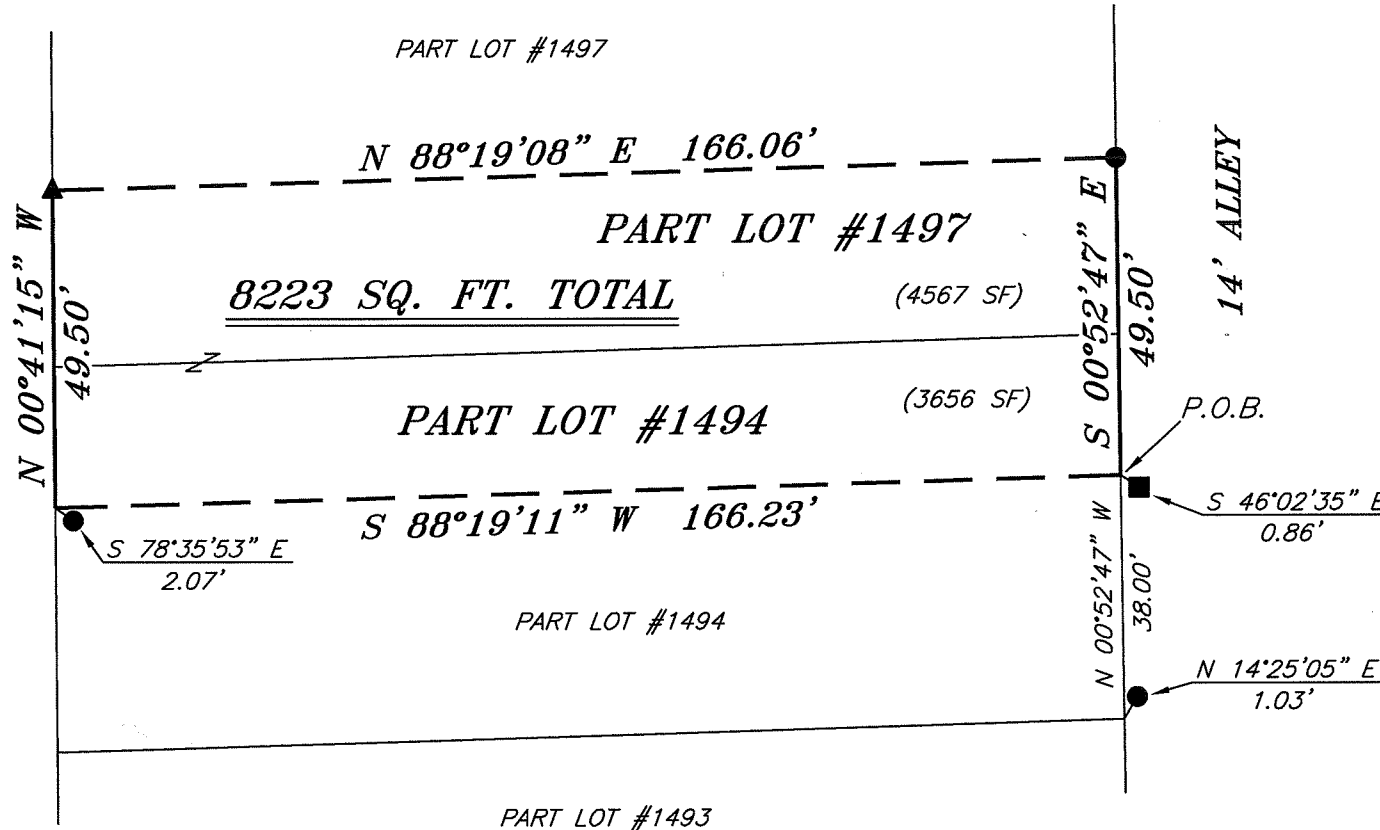


BEARINGS ARE BASED ON SURVEY I-106 ON FILE AT THE RICHLAND COUNTY TAX MAP OFFICE AND ARE INTENDED TO BE USED FOR ANGULAR DETERMINATION ONLY



SYCAMORE STREET 18.5' R/W



Chad F. Craig

SURVEY BY: CHAD F. CRAIG P.S. #8195
for SEILER & CRAIG SURVEYING INC.
52-1/2 NORTH MAIN STREET
MANSFIELD, OHIO 44902
(419) 525-3644
FAX (419) 525-3696

NEW SURVEY
OF EXISTING PARCEL
RICHLAND COUNTY
TAX MAP OFFICE

EAK 2-16-11
INITIAL DATE

CC-24

LEGEND

- IRON PIN FOUND
- METAL FENCE POST FOUND
- △ RAILROAD SPIKE SET
- ▲ RAILROAD SPIKE FOUND
- ⊗ 5/8" IRON PIN SET WITH CAP
STAMPED "CRAIG 8195"

SURVEY PLAT FOR PROPERTY TRANSFER	
PART LOTS #1494 AND #1497 CITY OF MANSFIELD RICHLAND COUNTY, OHIO	
DATE: FEBRUARY 9, 2011	SCALE: 1"=30'
SYCAMOREST-200	

SEILER & CRAIG SURVEYING, INC.

Douglas C. Seiler, PS & Chad F. Craig, PS
52 1/2 North Main Street
Mansfield, Ohio 44902
419-525-3644 Fax 419-525-3696
www.seilerandcraig.com

SURVEY DESCRIPTION

PART LOTS #1494 & #1497
CITY OF MANSFIELD,
RICHLAND COUNTY, OHIO

Situated in the City of Mansfield, County of Richland, State of Ohio and being known as part of Lots #1494 and #1497 of the consecutively numbered lots in said city, and being more particularly described as follows:

Commencing at a point marking the southeast corner of Lot #1494 referenced by a iron pin found on a bearing of North 14 degrees 25 minutes 05 seconds East and at a distance of 1.03 feet, Thence, North 00 degree 52 minutes 47 seconds West with the east line of said lot a distance of 38.00 feet to a point referenced by a metal fence post found on a bearing of South 46 degrees 02 minutes 35 seconds East and at a distance of 0.86 feet, the place of beginning of the parcel herein described;

Thence, South 88 degrees 19 minutes 11 seconds West a distance of 166.23 feet to a point on the west line of said lot, referenced by a iron pin found on a bearing of South 78 degrees 35 minutes 53 seconds East and at a distance of 2.07 feet;

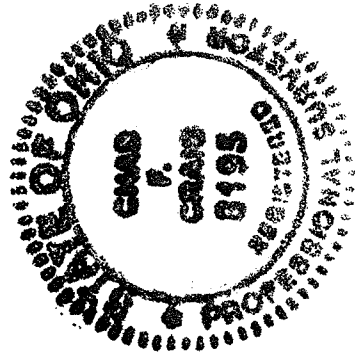
Thence, North 00 degree 41 minutes 15 seconds West with the said west line and the northerly prolongation thereof a distance of 49.50 feet to a railroad spike found on the west line of Lot #1497;

Thence, North 88 degree 19 minutes 08 seconds East a distance of 166.06 feet to an iron pin found on the east line of said lot;

Thence, South 00 degrees 52 minutes 47 seconds East with the said east line and the southerly prolongation thereof a distance of 49.50 feet to the place of beginning, containing a total of 8223 square feet of which 3656 square feet are located within Part Lot #1494 and 4567 square feet are located within Part Lot #1497, according to survey by Chad F. Craig P.S. #8195 for Seiler and Craig Surveying, Inc. on February 9, 2011, but subject to all right of ways and easements of record.

Iron pins set are 5/8" rods with caps stamped "CRAIG 8195".

Bearings are based on survey I-106 on file at the Richland County Tax Map Office and are intended to be used for angular determination only.



Chad F. Craig

Chad F. Craig P.S. #8195
for Seiler and Craig Surveying, Inc.

NEW SURVEY
OF EXISTING PARCEL
RICHLAND COUNTY
TAX MAP OFFICE

EAK 2-16-11
INITIAL DATE

CC-24