

NORTH HALF OF PLYMOUTH.

7th Lots 148 to 188 taken from the Smith Addition Surveyed by W. R. Glasgow, Recorded in Vol. 5, Page 31 & 32 Huron County Records. Dated Nov. 3rd 1904.

8th Lots Nos. 189 to 218 taken from the Fuss Cuykendall Addition Surveyed by W. R. Glasgow Recorded in Vol. 5, Page 35 & 36 Huron County Records. Dated March 27th 1905.

Lots Nos. 210, 211, 212, 213, 214, 215, 216, 217 & 218 of this Addition is a replating of Lots Nos. 77, 78, 79, 80, & 81 of the Edward Sherman Add.

9th Lots Nos. 219 to 234 taken from the Harriett Fortner Addition Surveyed by W. R. Glasgow. Recorded in Vol. 5, Page 37 Huron County Record. Dated Nov. 29th 1905.

Scale 100 Feet to the Inch.
Compiled and drawn by W. R. Glasgow C.E.
Dec. 19th 1911.

DRAWN FROM THE HURON COUNTY TAX MAPS OF 1910. Dimensions taken from the following Addition Plats.

1st Lots Nos 24 to 46 Samuel Powers Addition to the North Half of Paris Transcribed from Vol. 4, Page 358 of Huron County Records Dated May 17th 1825. The original dimensions of Poles is reduced to feet.

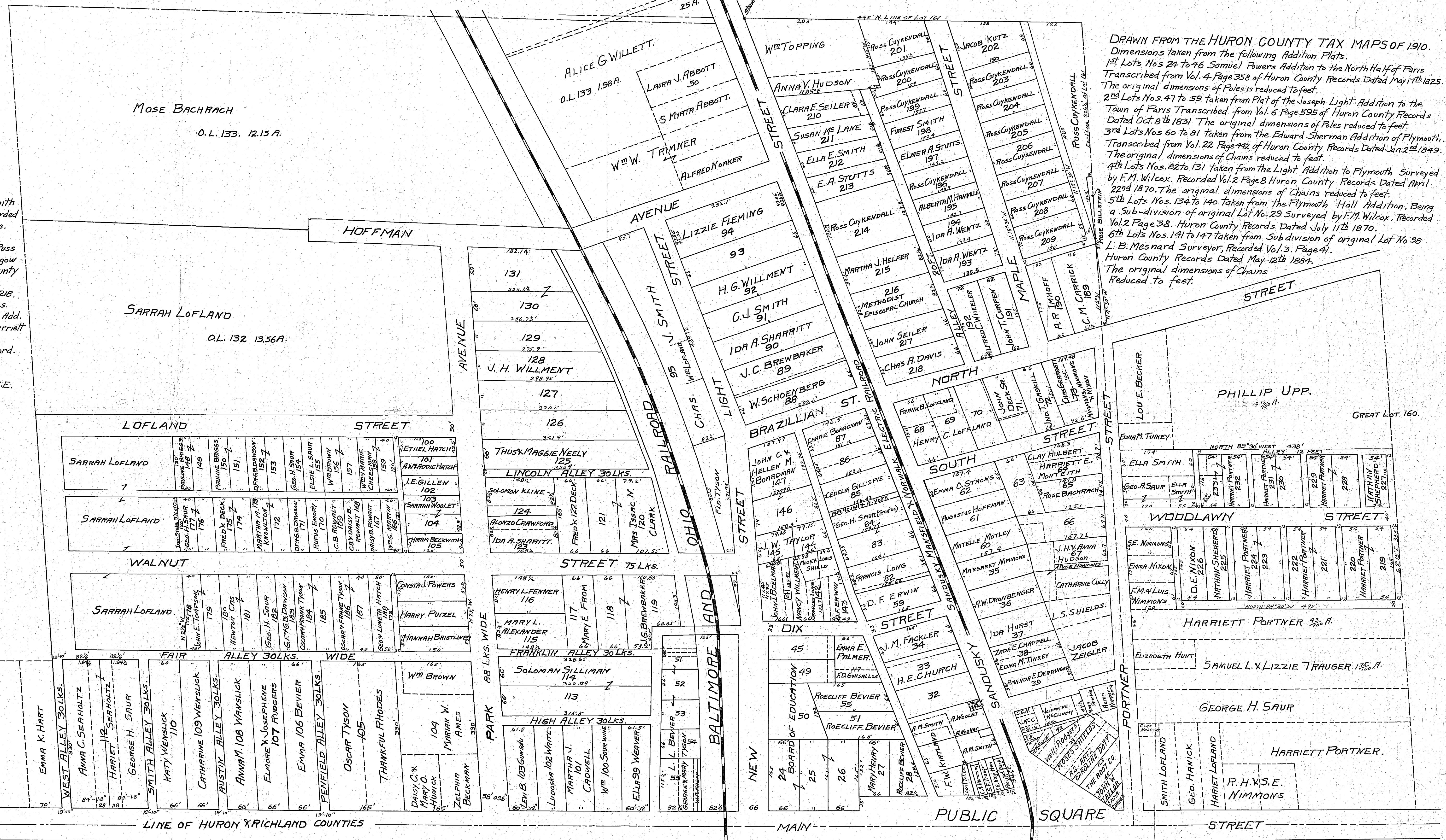
2nd Lots Nos. 47 to 59 taken from Plat of the Joseph Light Addition to the Town of Paris Transcribed from Vol. 6 Page 595 of Huron County Records Dated Oct. 8th 1831 The original dimensions of Poles reduced to feet.

3rd Lots Nos 60 to 81 taken from the Edward Sherman Addition of Plymouth. Transcribed from Vol. 22 Page 442 of Huron County Records Dated Jan. 2nd 1849. The original dimensions of Chains reduced to feet.

4th Lots Nos. 82 to 131 taken from the Light Addition to Plymouth Surveyed by F. M. Wilcox. Recorded Vol. 2 Page 8 Huron County Records Dated April 22nd 1870. The original dimensions of Chains reduced to feet.

5th Lots Nos. 134 to 140 taken from the Plymouth Hall Addition. Being a Sub-division of original Lot No. 29 Surveyed by F. M. Wilcox. Recorded Vol. 2 Page 38. Huron County Records Dated July 11th 1870.

6th Lots Nos. 141 to 147 taken from Sub-division of original Lot No 28 L. B. Messnard Surveyor, Recorded Vol. 3, Page 41. Huron County Records Dated May 12th 1884. The original dimensions of Chains Reduced to feet.



Mose Bachrach
O.L. 133. 12.15 A.

SARRAH LOFLAND
O.L. 132. 13.56 A.

PHILLIP UPP.
4 1/20 A.
GREAT Lot 160.

LINE OF HURON & RICHLAND COUNTIES