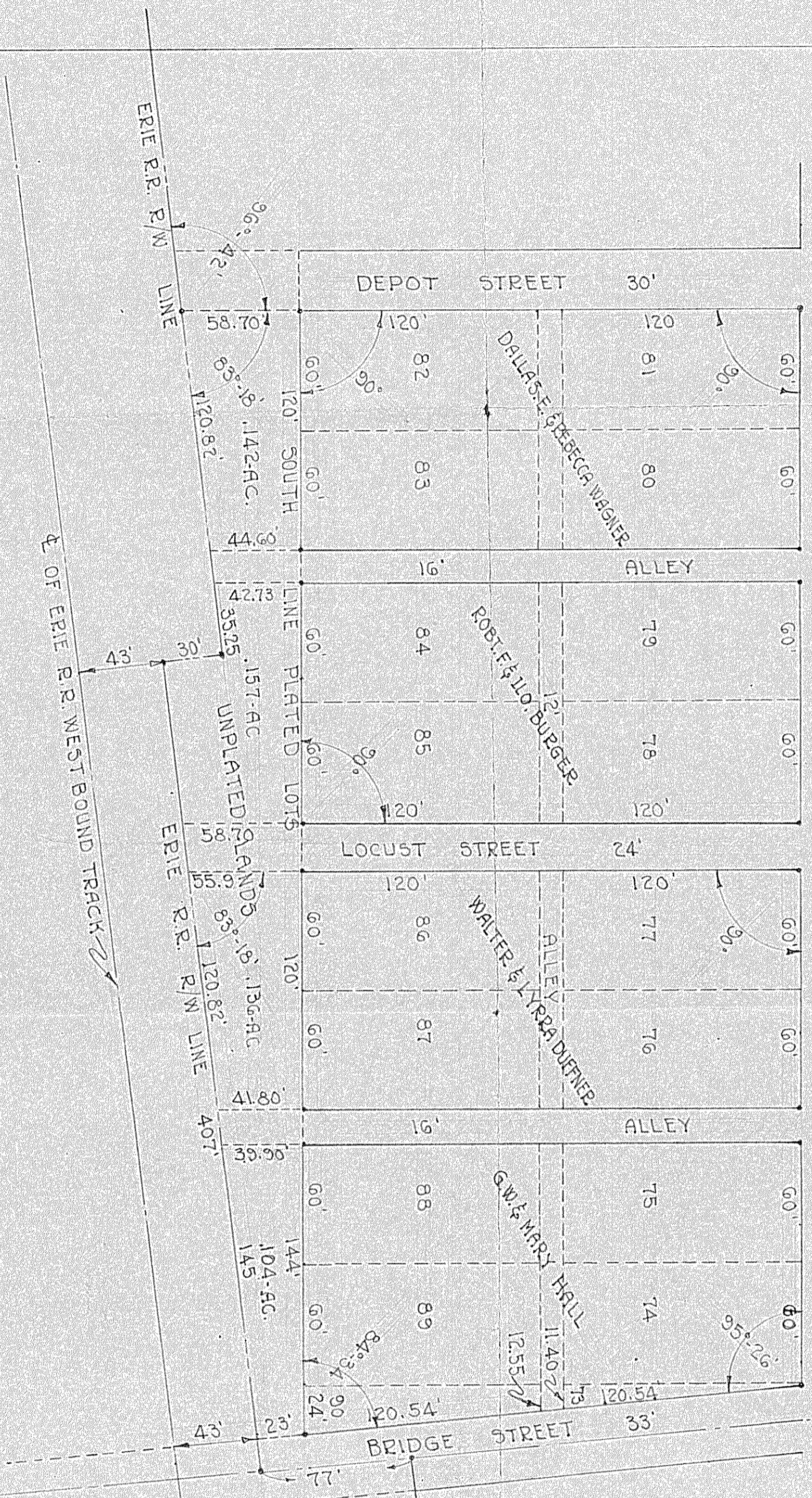


MANFIELD - GALLION ROAD S.H. 202 S.R. 30-S 60'



EAST LINE SECTION 20
WEST LINE SECTION 21

SPRINGFIELD TOWNSHIP
PT. 3E, QT. SEC. 20 TWP. 21, RA. 19
RICHLAND COUNTY
ONTARIO
VILLAGE E.
HACKEDORN
ADDITION
VOL. 2-3
PAGE 8
AUG. 12-1864

DON L. BORCHARDT
OFFICE OF COUNTY ENGINEER,
MANFIELD OHIO

CERTIFICATE

I, Walter E. Rusk, County Engineer, hereby certify that I have caused a field survey to be made of land shown hereon and that the plat and notes are correct. All streets and alleys have been marked in the field with iron pins,
AND FURTHER
IT is the opinion of myself and assistants that lands shown as "unplatted lands" are part of the Hockorn Estate, not now taxed as real estate.

APPROVED
SEPTEMBER 18, 1953
Walter E. Rusk
COUNTY ENGINEER

SEPTEMBER 17-1953
SCALE 1" = 50'-0"