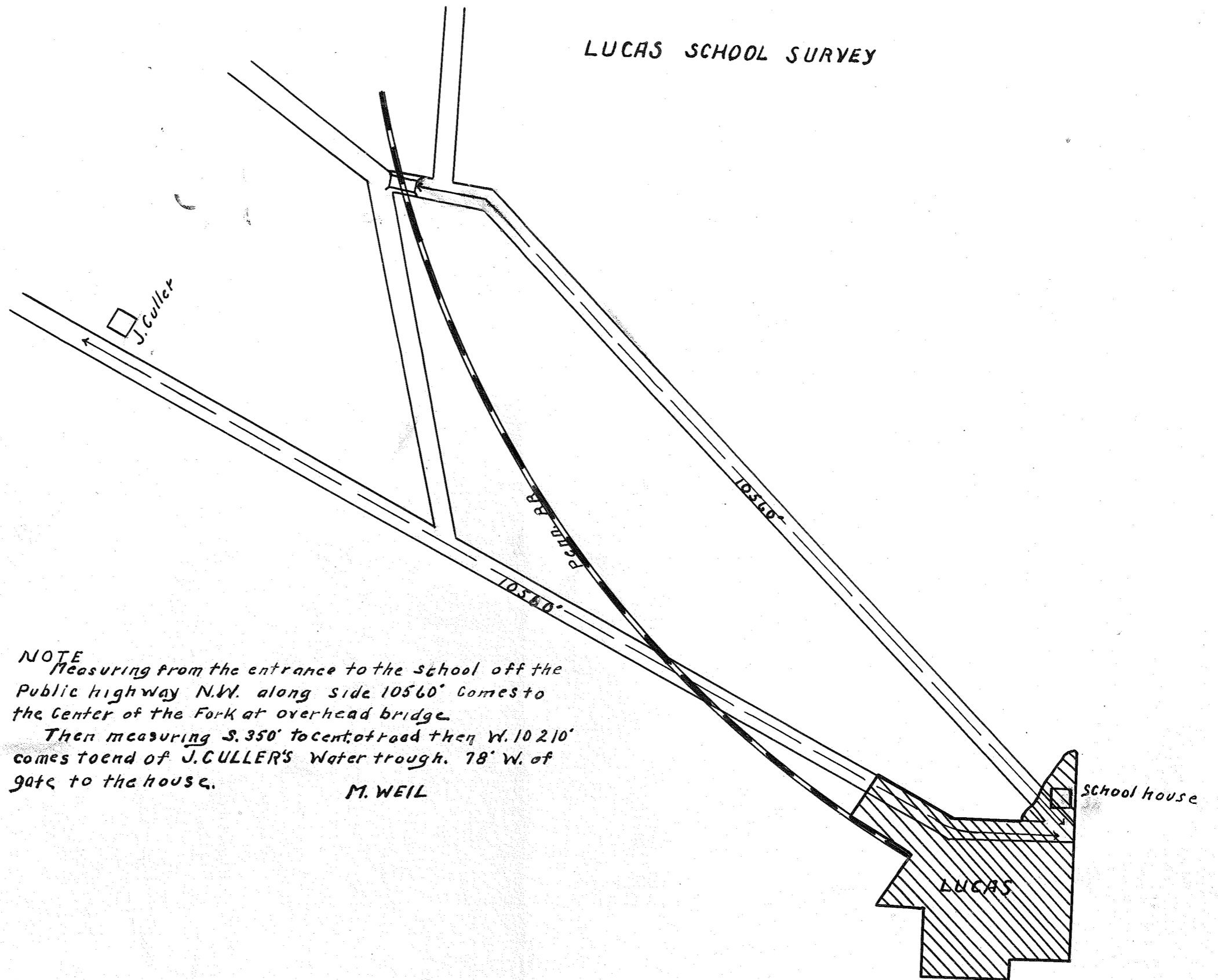


LUCAS SCHOOL SURVEY



**NOTE**  
Measuring from the entrance to the school off the Public highway N.W. along side 10560' comes to the center of the Fork at overhead bridge.  
Then measuring S. 350' to center of road then W. 10210' comes to end of J. CULLER'S Water trough. 78' W. of gate to the house.

M. WEIL