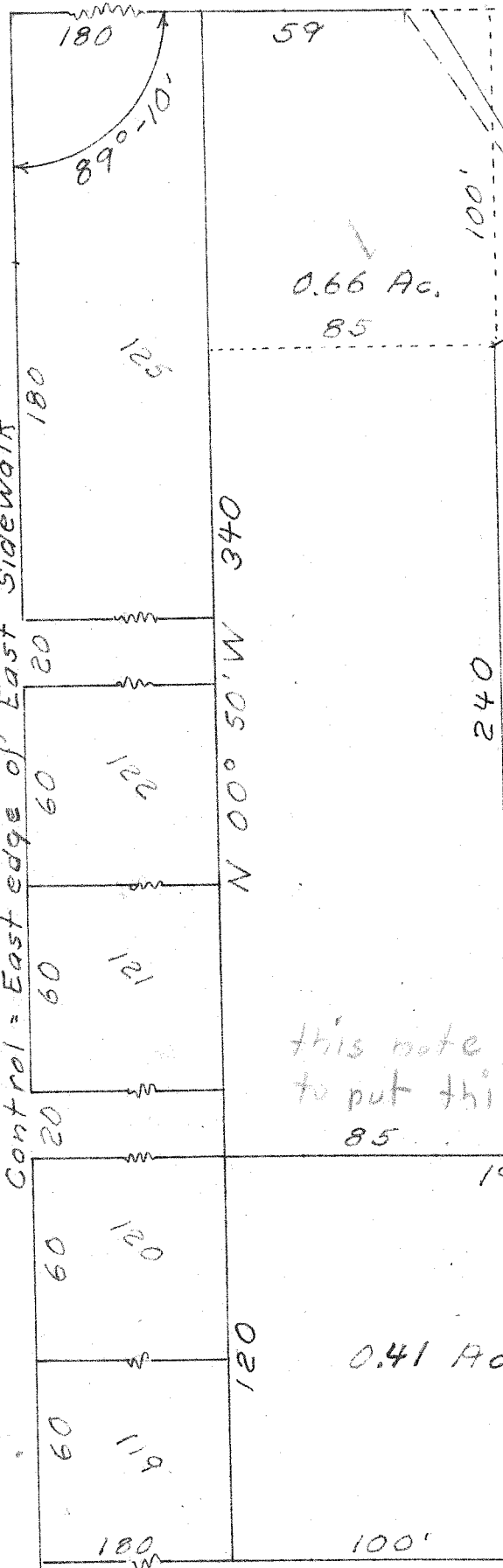


CLEVELAND ST. 50'  
East - West

See No 8-46

Control

1.3 South of South  
edge of sidewalk



0.66 Ac.  
85

0.58 Ac.

this note caused me  
to put this point here

85

112.2

197.2

0.41 Ac.

120

180

100'

NARROW ST. 40'

Control = East edge of East Sidewalk

V5, P. 5

(over)

Corporation line

See line fence extended Northward

Checks approx. by air photo

To the  
public road  
from  
book 216-page 437

BERGER SURVEY  
Lot 195 BUTLER  
Scale 1"=50' July 1958  
S. M. Horn Sovr 831  
No 15-1-40

Pd.