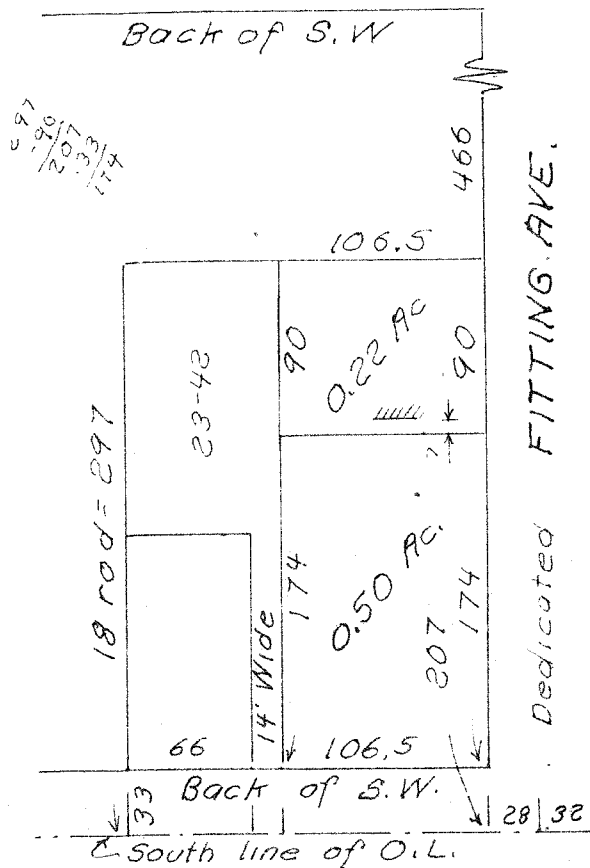


Dedicated

OGLE ST.



# GARBER ~ RAMSEY SURVEY

April 1975

S. Horn, SUB. 831

Nº 30-50-60°

Apart of  
Out Lot Nº 47  
The Village of Bellville

All

Being a part of Out Lot No. 47  
of the Village of Bellville,  
Richland County, Ohio.  
Described further.

## North Lot

Beginning at a point on the West line of Fitting Ave. 207 ft. (174 ft. from the back of sidewalk) North of the South line of said Out Lot.

Thence; North, 90 ft. with said West line.

Thence; West, 106.5 ft. parallel said South line.

Thence; South, 90 ft. parallel said West line.

Thence; East, 106.5 ft. parallel said South line to the place of beginning.

Containing 0.22 of an acre.

## South Lot

Beginning at the point of intersection of the West line of Fitting Ave. (when extended South) and the South line of said Out Lot.

Thence; North, 207 ft. (174 ft. from the back of sidewalk) with said West line.

Thence; West, 106.5 ft. parallel said South line.

Thence; South, 207 ft. (174 ft. to back of sidewalk) parallel said West line and to said South line.

Thence; East, 106.5 ft. with said South line to the place of beginning.

Containing 0.50 of an acre.

*Harold P. Ramsey  
Surveyor*