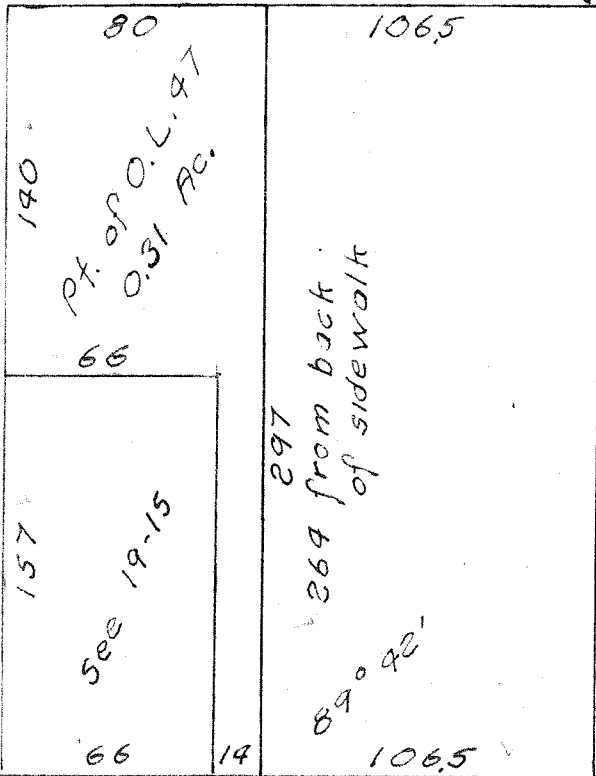


**OGLE ST**

Back of sidewalk  
(control)

13 rod = 214.5 - 28 = 186.5

966



18 Rod = 297

140

80

106.5

Pt. of O.L. 97  
0.31 Ac.

66

157

See 19-15

297

264 from back  
of sidewalk

89° 42'

66

14

106.5

33+

Back of sidewalk  
(parallel south line of O.L.)

28

32

**GARBER -  
MAGLOTT  
SURVEY**

June 1966

S. Horn, Suvr. 831

Nº 23-92-90

FITTING AVE 60'

MARKEY ST 60'  
& Pavement control

264

**CHURCH ST**

(Pav. & not same as original)

- 1 Being a part of Out lot 47 of The Village of Bellville, Highland County, Ohio.
- 2 Beginning at a point on the South line of the Out lot, 106.5 ft. West of the West line of Fitting Ave.
- 3 Thence; West, 14 ft. with the South line of the Out lot.
- 4 Thence; North, 157 ft. (124 ft. from back of sidewalk) parallel the West line of Fitting Ave.
- 5 Thence; West, 66 ft. parallel the South line of the Out lot.
- 6 Thence; North, 140 ft. parallel the West line of Fitting Ave.
- 7 Thence; East, 80 ft. parallel the South line of the Out lot.
- 8 Thence; South, 297 ft. (264 ft. to back of sidewalk) parallel the West line of Fitting Ave. to the place of beginning.
- 9 Containing 0.31 acres.