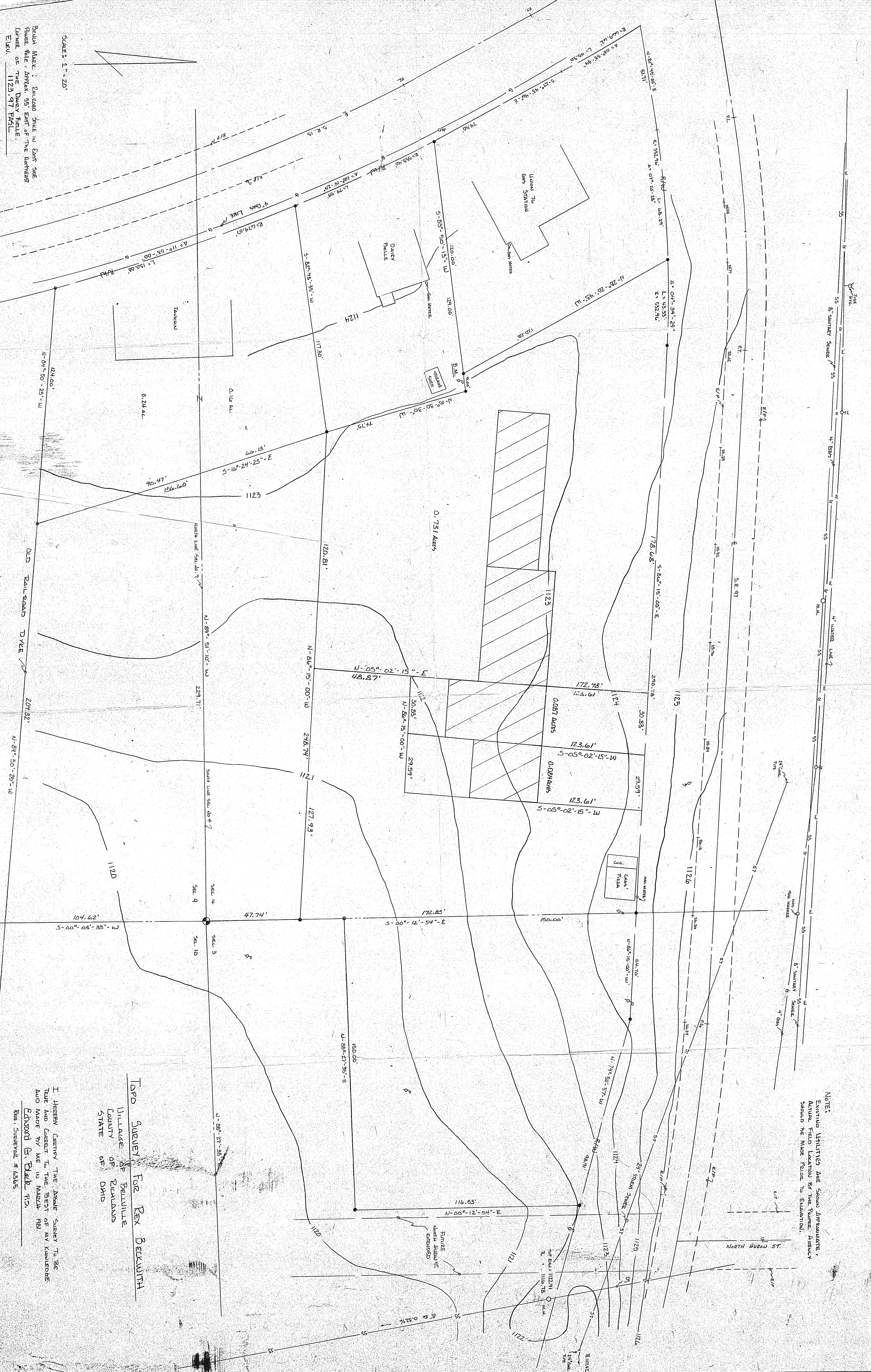
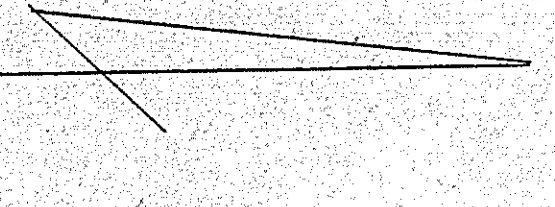


SCALE: 1" = 20'
 BEARING AND DISTANCE TO EAST AND NORTH POINT APPROX. 55' EAST OF THE WESTERN CORNER OF THE DAVEY HOUSE
 ELEV. 1123.97 FASL



NOTE:
 EXISTING UTILITIES ARE SHOWN APPROXIMATELY.
 ACTUAL FIELD LOCATIONS BY THE REVERSE ASSEMBLY SHOULD BE MADE PRIOR TO EXCAVATION.

TOPD SURVEY FOR REX BECKWITH
 VILLAGE OF BEAULIE
 COUNTY OF RICHMOND
 STATE OF OHIO

I HEREBY CERTIFY THE ABOVE SURVEY TO BE TRUE AND CORRECT TO THE BEST OF MY KNOWLEDGE AND MADE BY ME OR UNDER MY SUPERVISION.
 EDWARD G. BARKER JR.
 REAR SURVEYOR # 43165

4/21/83 LABS
 11/1/81 LABS
 1/6/88 LABS