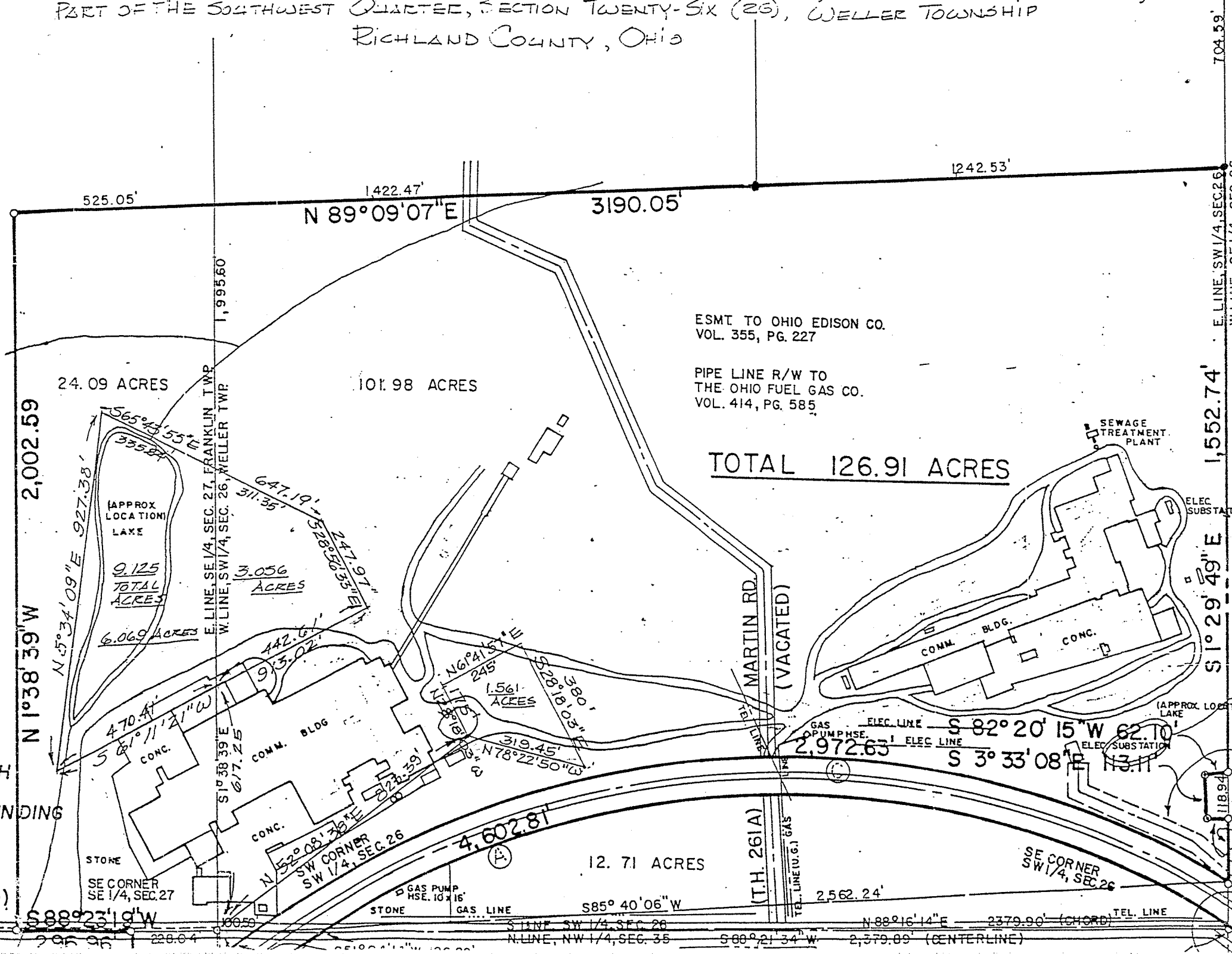


PART OF THE SOUTHWEST QUARTER, SECTION TWENTY-SIX (26), WELLES TOWNSHIP
 RICHLAND COUNTY, OHIO



N 1° 38' 39\" W 2,002.59

24.09 ACRES

101.98 ACRES

TOTAL 126.91 ACRES

ESMT TO OHIO EDISON CO.
 VOL. 355, PG. 227

PIPE LINE R/W TO
 THE OHIO FUEL GAS CO.
 VOL. 414, PG. 585

SEWAGE
 TREATMENT
 PLANT

ELEC
 SUBST

COMM. BLDG.
 CONC.

(APPROX. LOCAT.)
 LAKE

S 82° 20' 15\" W 62.10
 S 3° 33' 08\" E 13.11

12.71 ACRES

STONE
 GAS PUMP
 HSE. 10' x 16'

SE CORNER
 SW 1/4, SEC. 26

S 88° 23' 19\" W

S 85° 40' 06\" W
 S LINE, SW 1/4, SEC. 26
 N. LINE, NW 1/4, SEC. 35

N 88° 16' 14\" E 2379.90' (CHORD)
 S 88° 21' 34\" W 2,379.09' (CENTERLINE)

E. LINE, SW 1/4, SEC. 26
 W. LINE, SW 1/4, SEC. 26

1,552.74'
 S 1° 29' 49\" E

118.94'

704.59'

INDING

SE CORNER
 SE 1/4, SEC. 27

295.95'

228.04'

100.50'

251.00' (CHORD)
 W. LINE, SW 1/4, SEC. 26

S 88° 21' 34\" W

2,379.09' (CENTERLINE)

TEL. LINE

118.94'