

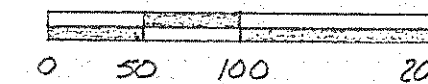
E.C. BAUER
VOL. 117 P. 213
8.06 AC.

SURVEYED
FOR
TRANSFER
5.001 AC.

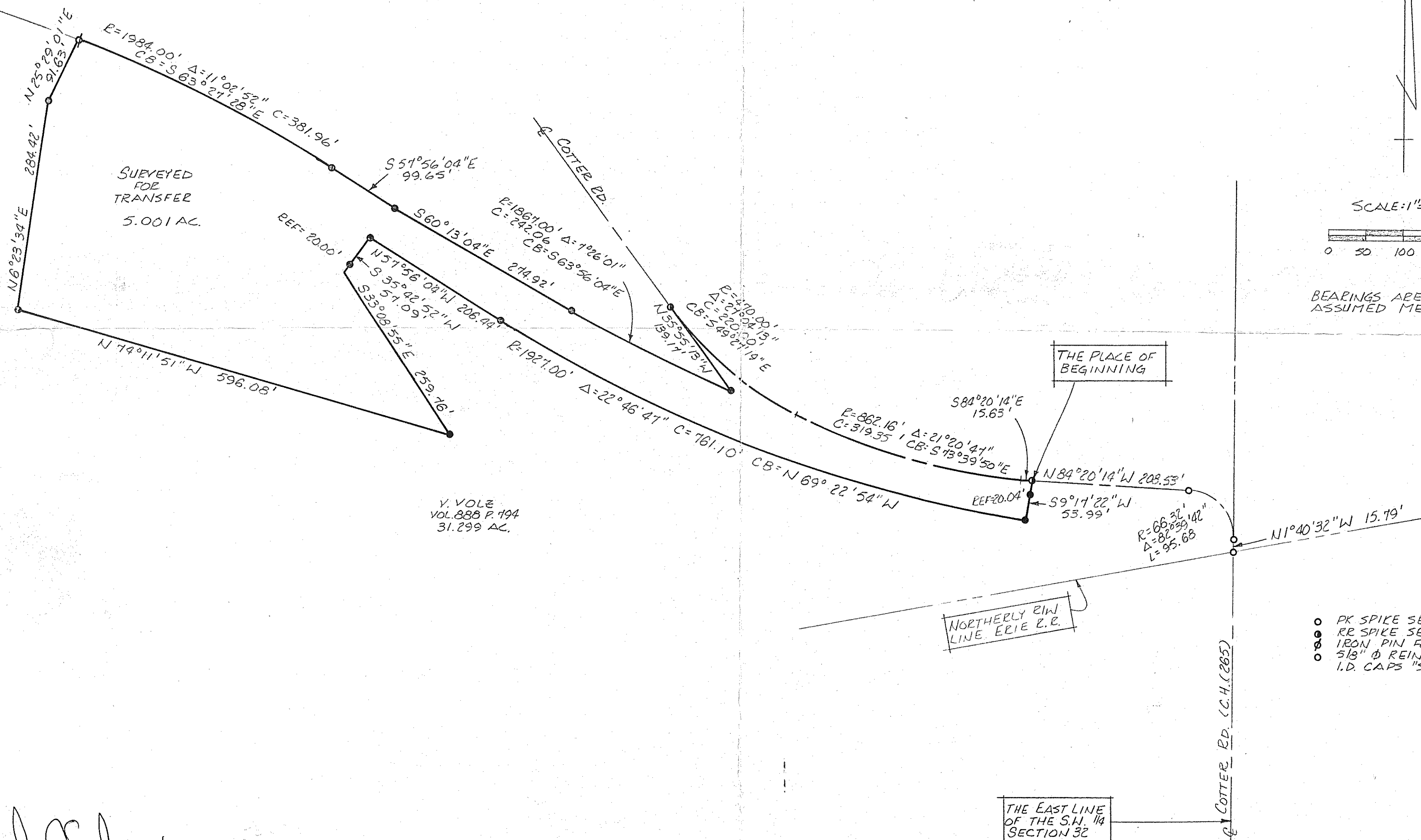
V. VOLE
VOL. 888 P. 194
31.299 AC.

NORTH

SCALE: 1"=100'



BEARINGS ARE BASED ON AN ASSUMED MERIDIAN.



- PK SPIKE SET
- RR SPIKE SET
- IRON PIN FOUND
- 5/8" Ø REINFORCING RODS WITH I.D. CAPS "SEILER #6869" SET.

Douglas C. Seiler 3/7/91
SURVEY BY: DOUGLAS C. SEILER
REG. SURVEYOR #6869
58112 NORTH MAIN ST.
MANSFIELD, OHIO
(419) 525-3644

THE EAST LINE
OF THE S.W. 1/4
SECTION 32

DRA 3-6-91
INITIAL DATE
TRANSFER APPROVED
JACK REINER
RICHLAND CO. AUDITOR

APPROVED
TAX MAP OFFICE
E.A.N. 3-6-91
INITIAL DATE

SURVEY PLAT FOR PROPERTY TRANSFER	
VOLE	
PT. S.W. 1/4 SECTION 32, T-24, R-17	
WELLER TOWNSHIP	
RICHLAND COUNTY, OHIO	
DATE: FEB. 7, 1991	SCALE: 1"=100'
DENG. N ^o : 902402-B	DRWN. BY: JAA