

WILLIAMS-D.V. 883 P. 800

Fence along N. side of lane

GROGDOZA O.R.V. 99 P. 69

N 89° 53' 43" E

383.86 S 00° 41' 20" W 129.63'

S 89° 08' 49" E 2,800.64'

81.020 Ac. in NW 1/4 Sec 30

2.770 Ac. in NE 1/4 Sec 25

83.790 Ac. Total

Bearing 30° W

Basis from O.R.V. 197 P. 191

11.008706' NW to corner of Sec 30

11.008706' NW to corner of Sec 30

974.532

S. Line of NW 1/4 of Sec 30

N 89° 02' 51" W 2,303.70

ROBINSON O.R.V. 84 P. 963

E. Line of NW 1/4 of Sec 30  
S 1° 24' 29" W 1,334.19'

D.V. 861 P. 344

FULK

O.R.V. 18 P. 493

STEELE

SE Cor of NW 1/4 of Sec. 30

⊙ = Iron Pin capped "LITTLE-5524"

■ = P.K. nail set

*Robert M. Little*

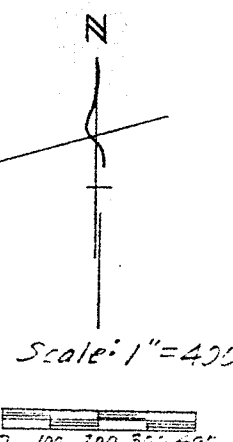
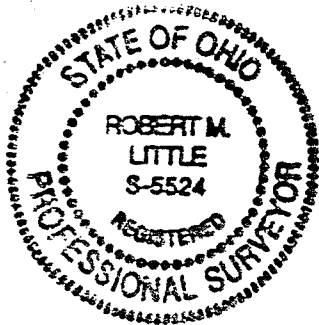
Robert M. Little  
Registered Surveyor

# Ohio 5524

May 7, 1992

DRAWING OF SURVEY FOR MOSE YODER

PART OF NW 1/4 SECTION 30 TOWNSHIP 24 RANGE 17  
AND NE 1/4 SECTION 25 TOWNSHIP 22 RANGE 18  
WELLER TOWNSHIP  
RICHLAND COUNTY, OHIO



629-66