

N. 87° 29' E. 1312'

58.84.

N. 100° W. 1964'

1754'

25°

88° 20'

89°

210'

242'

670'

390'

Dead 236R

Dead 120R

Dead 120R

Dead 26R

Dead 120R

Dead 120R

Dead 120R

Dead 120R

Dead 120R

Dead 120R

Dead 120R

Dead 120R

Dead 120R

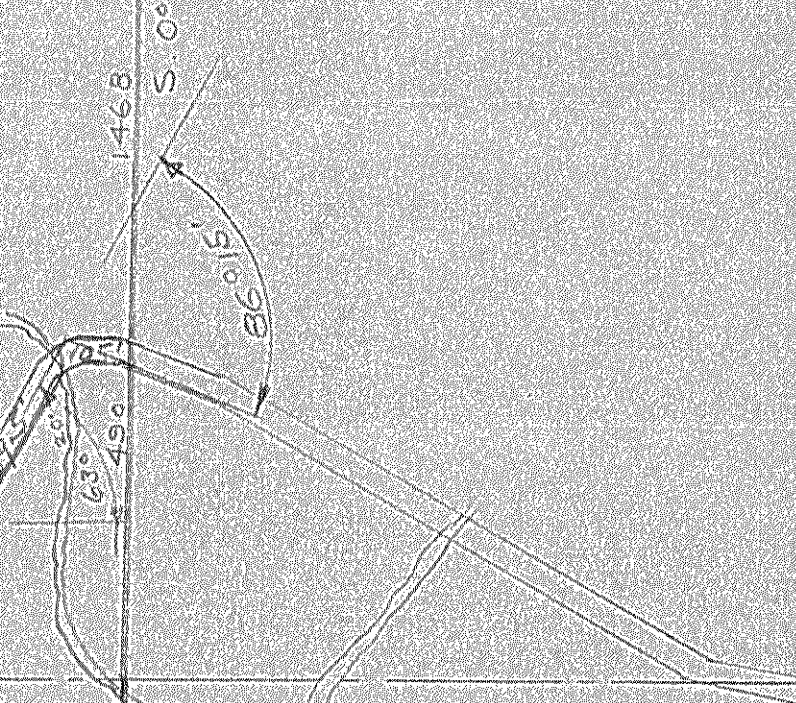
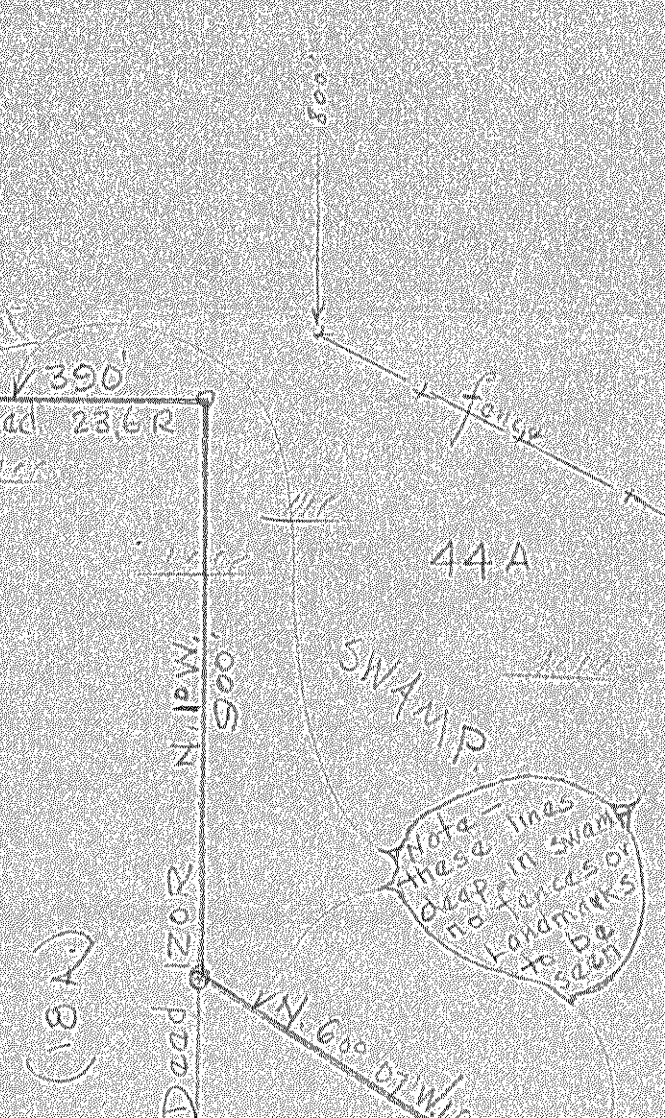
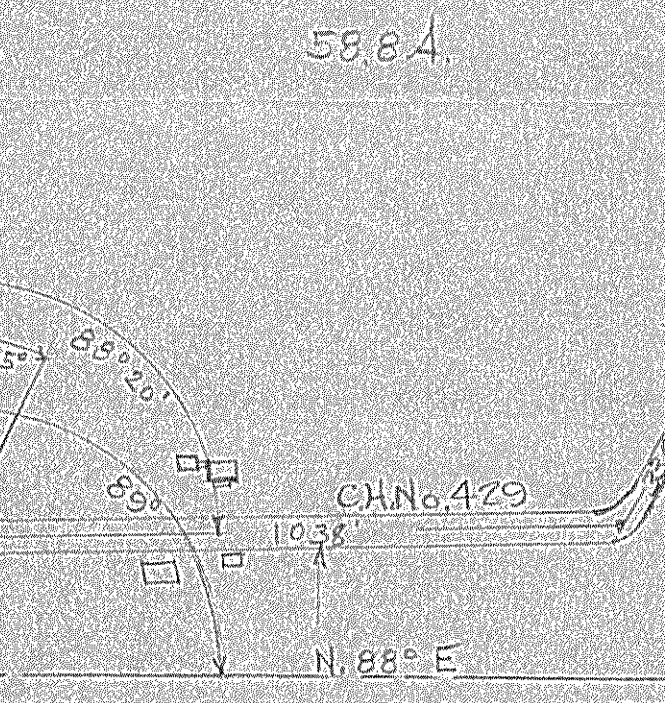
Dead 120R

Dead 120R

Dead 120R

Dead 120R

Dead 120R



Description  
 Begin at the center of sec. 12  
 T. 22, R. 18, Weller Twp., Richland Co. O.  
 Thence N. 100° W. on 1/4 sec. line  
 1964 ft. Thence N. 87° 29' E. 1312'  
 Thence S. 0° 17' E. 4106 ft. to a  
 point in the swamp; thence  
 N. 60° 07' W. in swamp, 1040 ft.  
 to a post; thence N. 100° W.  
 900 ft. to a point 120 Rds. N.  
 of the S. line of said  
 section; thence S. 88° W.  
 390 ft. to a point on the  
 1/4 section line 120 Rds  
 N. of the SW. Cor. of the SE 1/4  
 of said section; thence  
 N. 100° W. on 1/4 section line  
 670 ft. to the place of  
 beginning containing 102.8 A.

LATIMORE SURVEY  
 6-12-40  
 Pt. NE & SE 1/4 of  
 SEC. 12, T. 22, R. 18.  
 WELLER TWP.  
 RICHLAND CO. O.  
 CH# 242

GRINES 20A

Map by AB

Repl. Weller