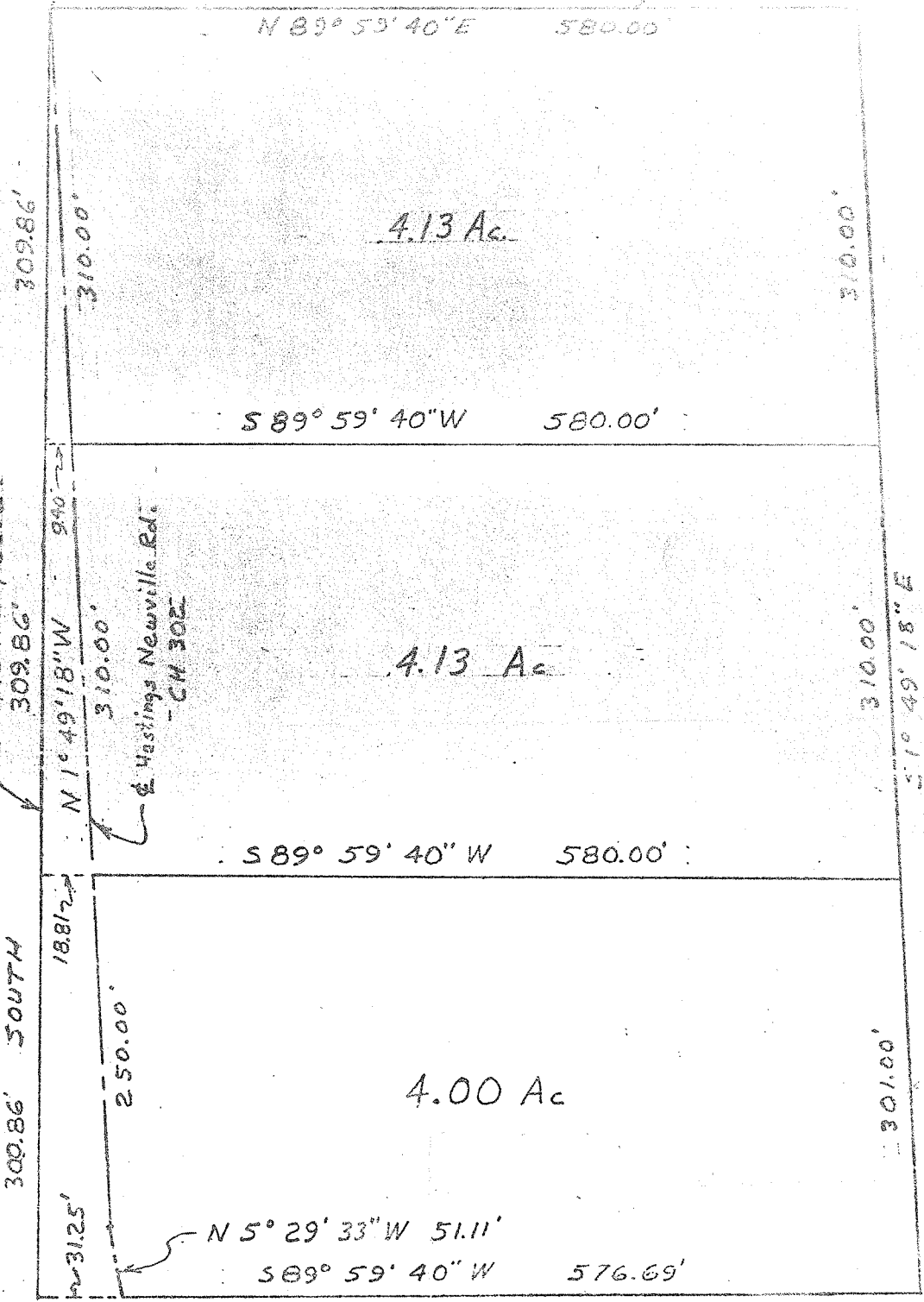


1/4 SW 1/4 Sec 24

N Line SW 1/4 NE 1/4 Sec 24
N 89° 59' 40" E 580.00'



SCALE
1" = 120'

W Line NE 1/4 Sec 24

300.86' SOUTH

4.13 Ac

4.13 Ac

4.00 Ac

Hastings Newville Rd.
- CM 302

N 5° 29' 33" W 51.11'
S 89° 59' 40" W 576.69'

PROPERTY OF
A. & E. SCHAG

TWP. OF WASHINGTON, COUNTY
OF RICHLAND, STATE OF OHIO
PART SW 1/4 NE 1/4 SECTION 24
TOWNSHIP 20, RANGE 18

Robert A. Cumming
REG. SUR. #4939
17 AUGUST 1974