

650  
 670 x 1250 ÷ 4 = 192  
 1/2 800 x 560 ÷ 4 = 56  
 248

D	196	E	196
	298		298
430	494	430	494
1072	1035	1072	1035
1502	1479		

N 89 1/2° W

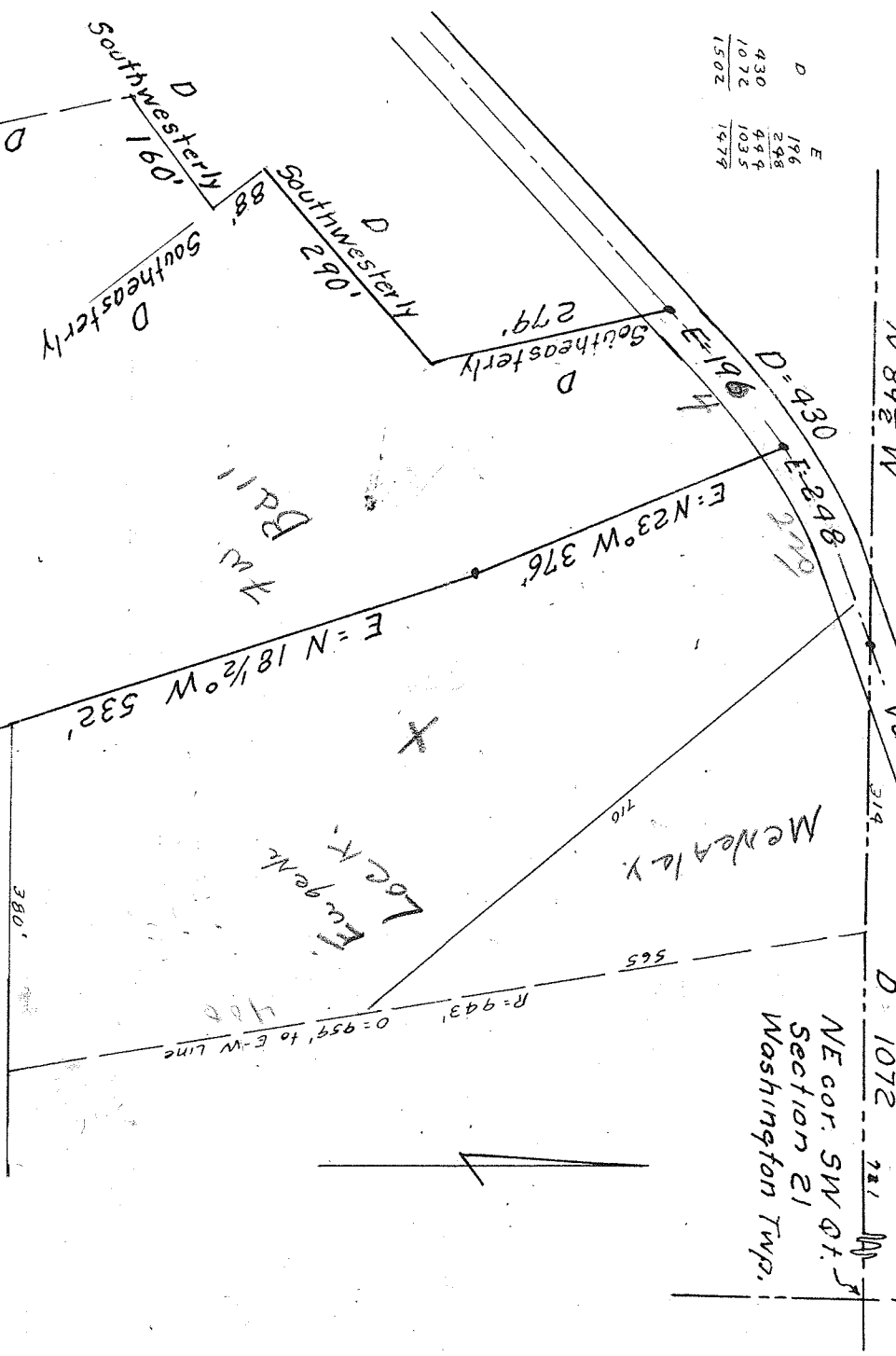
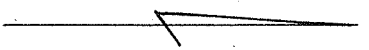
Vanderbilt Road

O 1035  
 D 1072

NE cor. SW Q. 4.  
 Section 21  
 Washington Twp.

\* 328

721  
 314



24.5 ± Acres

Note on this plat the  
 bottom line was moved  
 up (North) 900'

- R = Record
- D = Deed
- See book 310 page 96-97
- O = Observed
- C = Calculated
- E = Established

D = S 12°-32' E 1286.6'

O & C = 690' East  
 D = 1320.2'

R = 631'

No 10-76

JOHN BALL SURVEY  
 Scale 1" = 200'  
 June 1955

S. M. Horn, Surveyor 831