

BEARING	DIST	SIN	COS	N	S	E	W	DMD	N	S
N 88-01 1/4 E	120.	99940	03454	4.1		119.9		119.9	492	
N 23-53 1/4 E	200.	40494	91434	182.9		81.0		320.8	58.674	
N 88-01 1/4 E	372.	99940	03454	12.8		371.8		773.6	9.902	
S 1-17 1/4 E	180.	02247	99975		179.9	4.0		1149.4		206.777
N 88-01 1/4 E	60.	99940	03454	2.1		60.0		1213.4	2.548	
N 1-17 1/4 W	180.	02247	99975	180.0			40	1269.4	228.492	
N 88-01 1/4 E	344.	99940	03454	11.9		343.8		1609.2	19.149	
N 1-58 3/4 W	1037	03954	99940	1036.4			35.8	1917.2	1986.986	
S 88-01 1/4 W	691.	99940	03454		23.8	690.6		1190.8		28.341
S 2-29 1/2 E	605.5	04203	99912		604.9	25.5		525.7		317.996
S 23-53 1/4 W	680.49	40494	91434		622.2		275.6	275.6		171.478

1430.2 1430.8 1006.0 1006.0

2.306.243 724.592

724.592

2) 1.581.651

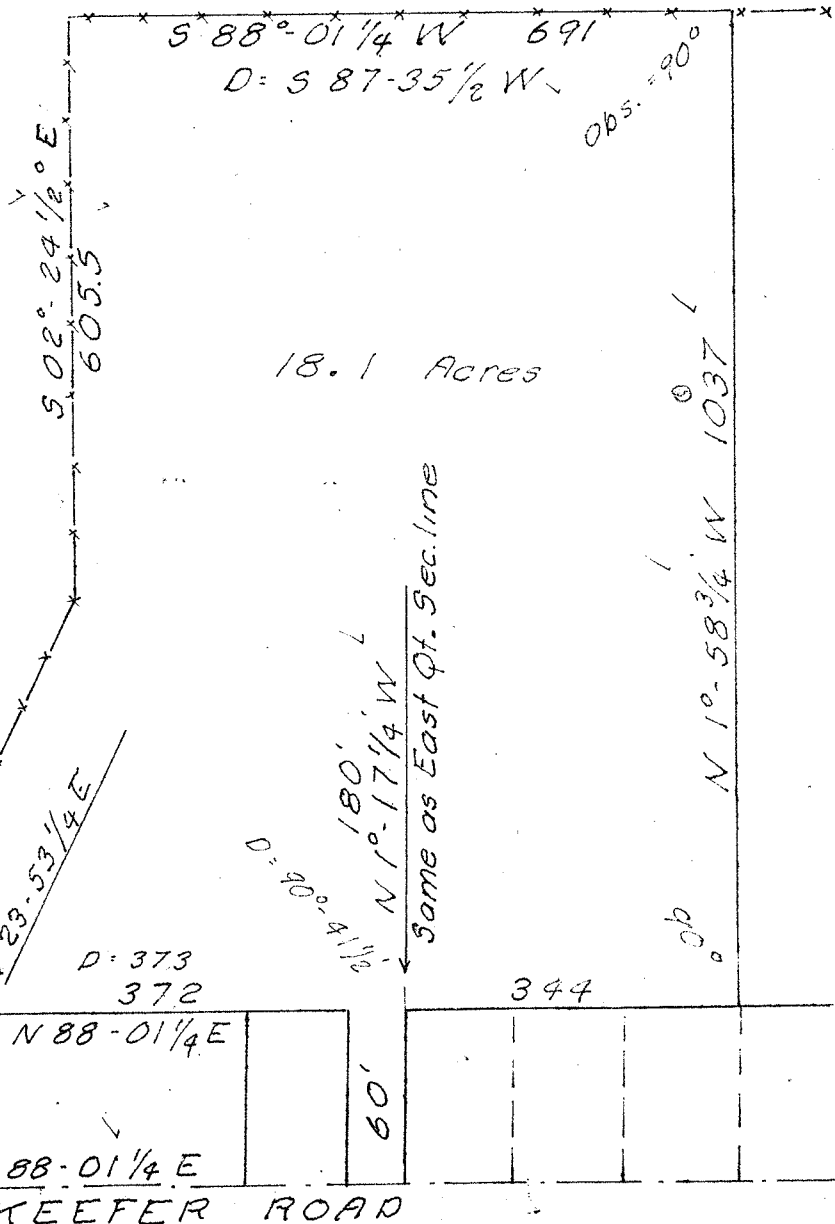
93560) 790.826

18.15 Acres

Apart of
Washington Twp
Section 12
Northwest Qt.

**Mc FARLAND
- VABEL
SURVEY**

May 1966
S. Horn, Suvr. 831
N° 23-18-90



18.1 Acres

LITTLE-WASHINGTON RD
West line of Qt.

see
12-05

DEF: J 23/4

600

120

200

D: 373
372

N 88-01 1/4 E

N 88-01 1/4 E

KEEFER ROAD

60'

344

Same as East Qt. Sec. line

D: 90°-4 1/2

N 1°-17 1/4 W

N 1°-58 3/4 W 1037

Obs. = 90°

Obs.