

THE NW CORNER OF THE NW 1/4 SECTION 8 THE PLACE OF BEGINNING

CORPORATION LINE CITY OF MANSFIELD

THE SW CORNER OF THE NW 1/4 SEC. 8

THE NW CORNER OF THE SW 1/4 SEC. 8 THE PLACE OF BEGINNING

CORPORATION LINE CITY OF MANSFIELD

THE SOUTH LINE OF THE NW 1/4 SEC. 8
 THE NORTH LINE OF THE SW 1/4 SEC. 8

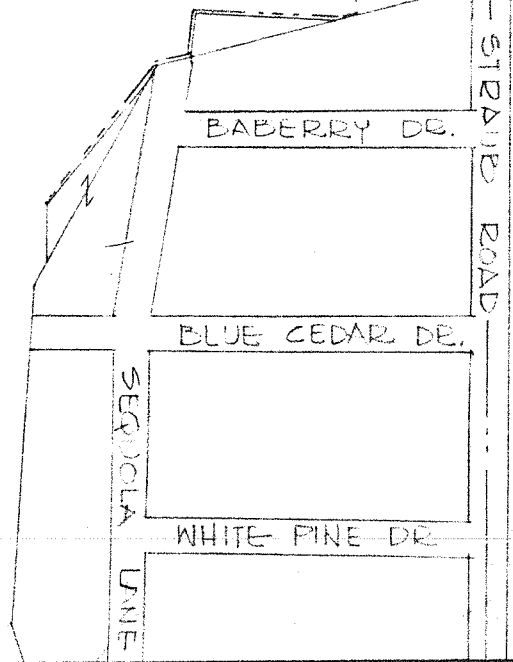
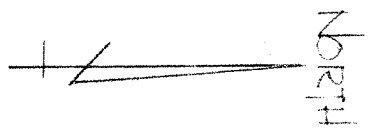
L & V SUDDER
 45.365 AC.
 THE WEST LINE OF THE SW 1/4 SEC. 8

PT. SW 1/4 SEC. 8
 20.366 AC.

PART NW 1/4 SECTION 8
 67.64 AC

(64.43 AC. IN CITY OF MANSFIELD)
 (3.21 AC. IN WASHINGTON TWP.)

SANDY HILL
 FRUIT EARN, INC.



SANDY HILL FRUIT EARN, INC.

PT. NW 1/4 & PT. SW 1/4 SEC. 8
 WASHINGTON TOWNSHIP
 CITY OF MANSFIELD
 RICHLAND COUNTY,
 OHIO

Justin A. Seller
 JUSTIN A. SELLER
 REG. SURVEYOR # 4421

SURETY PLAT

DATE: AUG. 16, 1967
 SCALE: 1" = 330'
 DRAWN BY: JAS