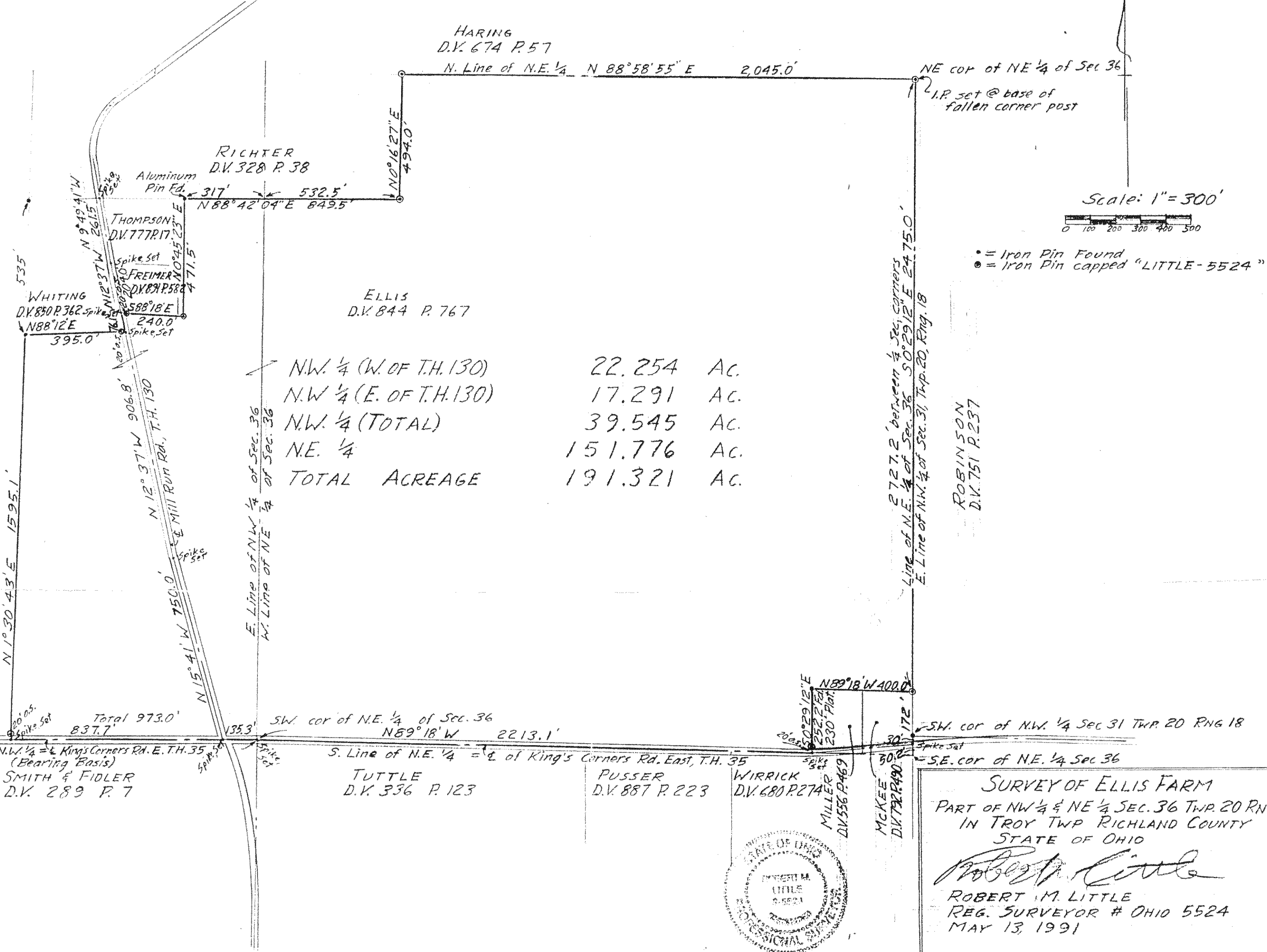


BURKE PILE  
D.V. 606 P. 676

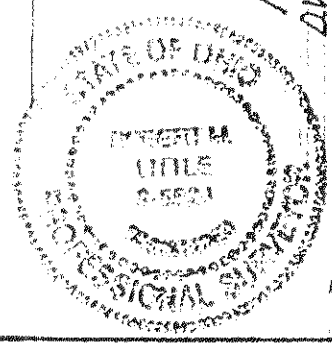


Scale: 1" = 300'

• = Iron Pin Found  
 ● = Iron Pin capped "LITTLE-5524"

N.W. 1/4 (W. OF T.H. 130)	22.254	Ac.
N.W. 1/4 (E. OF T.H. 130)	17.291	Ac.
N.W. 1/4 (TOTAL)	39.545	Ac.
N.E. 1/4	151.776	Ac.
<b>TOTAL ACREAGE</b>	<b>191.321</b>	<b>Ac.</b>

ROBINSON  
D.V. 751 P. 237



**SURVEY OF ELLIS FARM**  
 PART OF NW 1/4 & NE 1/4 SEC. 36 TWP. 20 RN  
 IN TROY TWP RICHLAND COUNTY  
 STATE OF OHIO

*Robert M. Little*  
 ROBERT M. LITTLE  
 REG. SURVEYOR # OHIO 5524  
 MAY 13, 1991

DRA 5-16-91  
 INITIAL DATE  
 TRANSFER APPROVED  
 JACK REINER  
 RICHLAND CO. AUDITOR

NEW SURVEY  
 OF EXISTING PARCEL  
 TAX MAP APPROVED  
 E.A.W. 5-16-91  
 INITIAL DATE