

PLAT OF SURVEY
FOR

R. ROLF WHITNEY
BEING PART OF THE S.E. 1/4, SECTION 27,
AND THE N.E. 1/4, SECTION 34, TOWNSHIP 20,
RANGE 19, TROY TOWNSHIP, RICHLAND COUNTY,
OHIO. MAY 5, 1986.

R. C. WHITNEY
62.853 AC. VOL. 195 PG. 198

R. C. WHITNEY
20.676 AC.

J. M. DAVIDSON
54 AC. VOL. 257 PG. 296

M. BRUMENSCHENKEL
2.8 AC. VOL. 456 PG. 474

J. G. KENNEDY
1.4 AC. VOL. 456 PG. 266

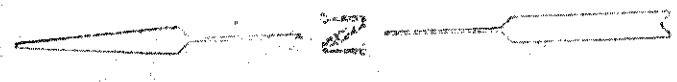
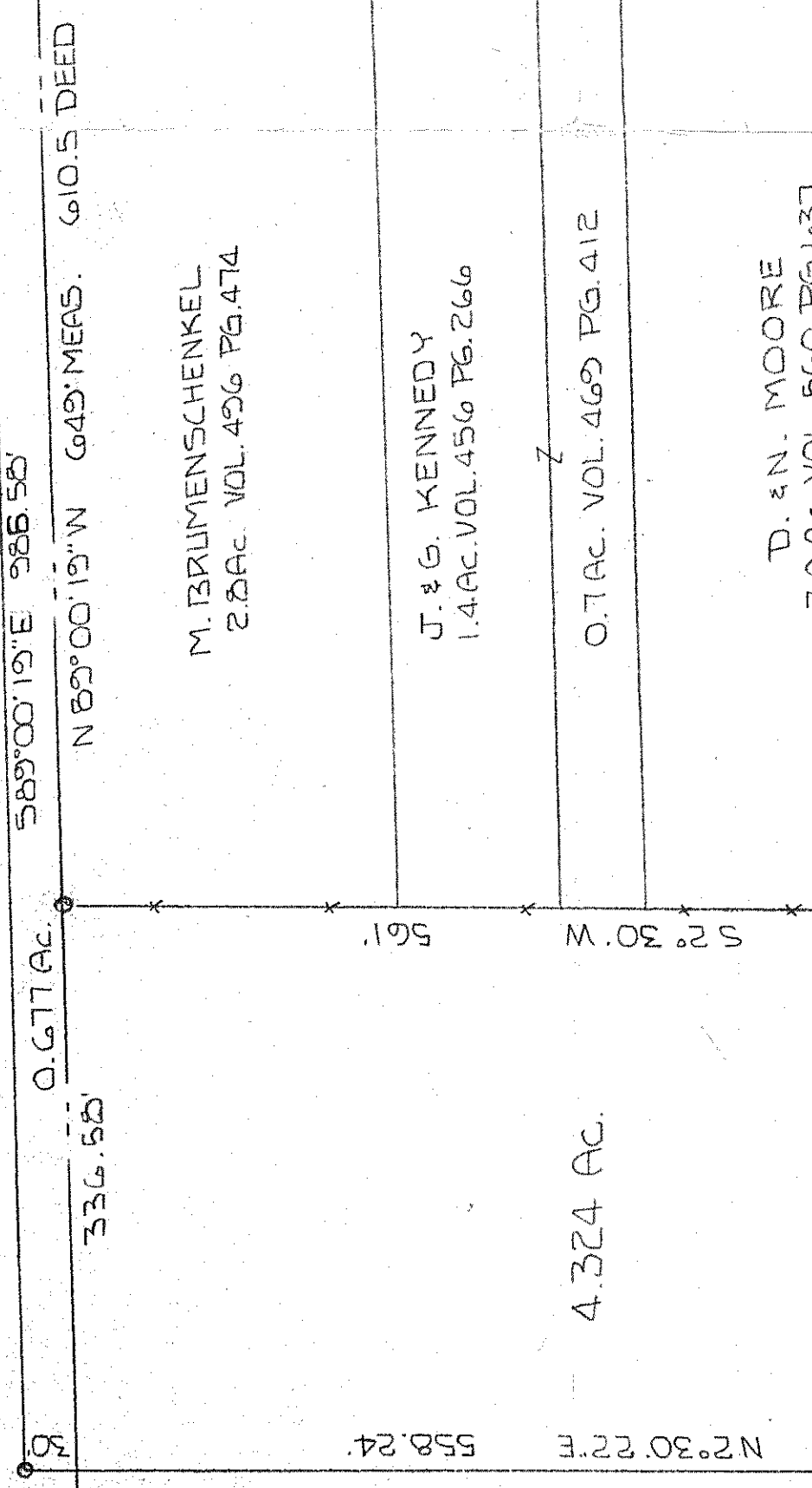
0.7 AC. VOL. 469 PG. 412

D. N. MOORE
3.0 AC. VOL. 560 PG. 1637

MAXWELL ROAD T. H. 132
E. LINE N.E. 1/4 SECTION 34

S.E. 1/4 SECTION 27
E. LINE S.E. 1/4 SECTION 27

S.E. 1/4, S.E. 1/4,
SECTION 27
N.E. 1/4, N.E. 1/4,
SECTION 34



SCALE: 1" = 100'
100' 50' 0' 50' 100'
BEARINGS ASSUMED

○ IRON PIN FOUND
● 5/8" IRON PIN SET

By *Larry G. Blunk*
LARRY G. BLUNK #6320

