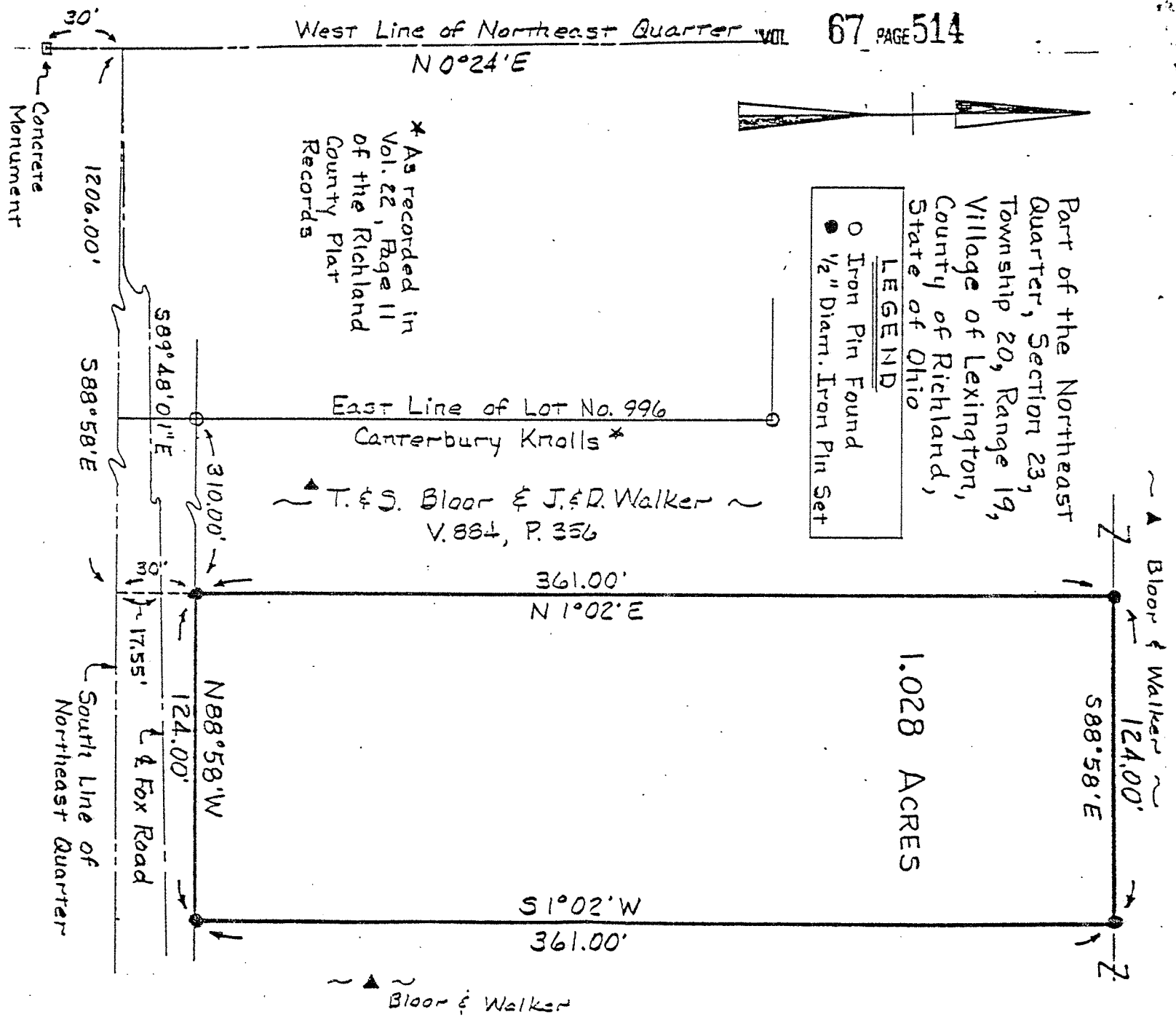




Part of the Northeast Quarter, Section 23, Township 20, Range 19, County of Lexington, State of Ohio

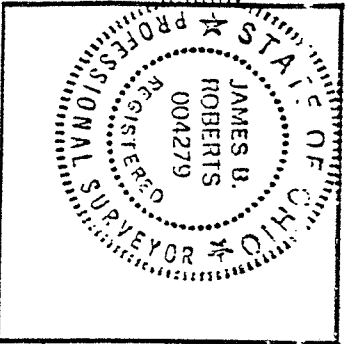
LEGEND
 ○ Iron Pin Found
 ● 1/2" Diam. Iron Pin Set



D.R.A. INITIAL J.R. DATE 7-19-90
 TRANSFER APPROVED
 FREEMAN J. SWANK
 RICHLAND CO. AUDITOR

APPROVED
 TAX MAP OFFICE
 D.R.A. INITIAL J.R. DATE 7-19-90

VILLAGE OF LEXINGTON
APPROVED
 Date 7/19/90
 Initials J.R.
M. WATKINS



Survey by
 K.E. McCartney & Assoc.
 Consulting Engineers
 Mansfield, Ohio
 James B. Roberts
 Registered Surveyor No. 4279
 May 16, 1990

