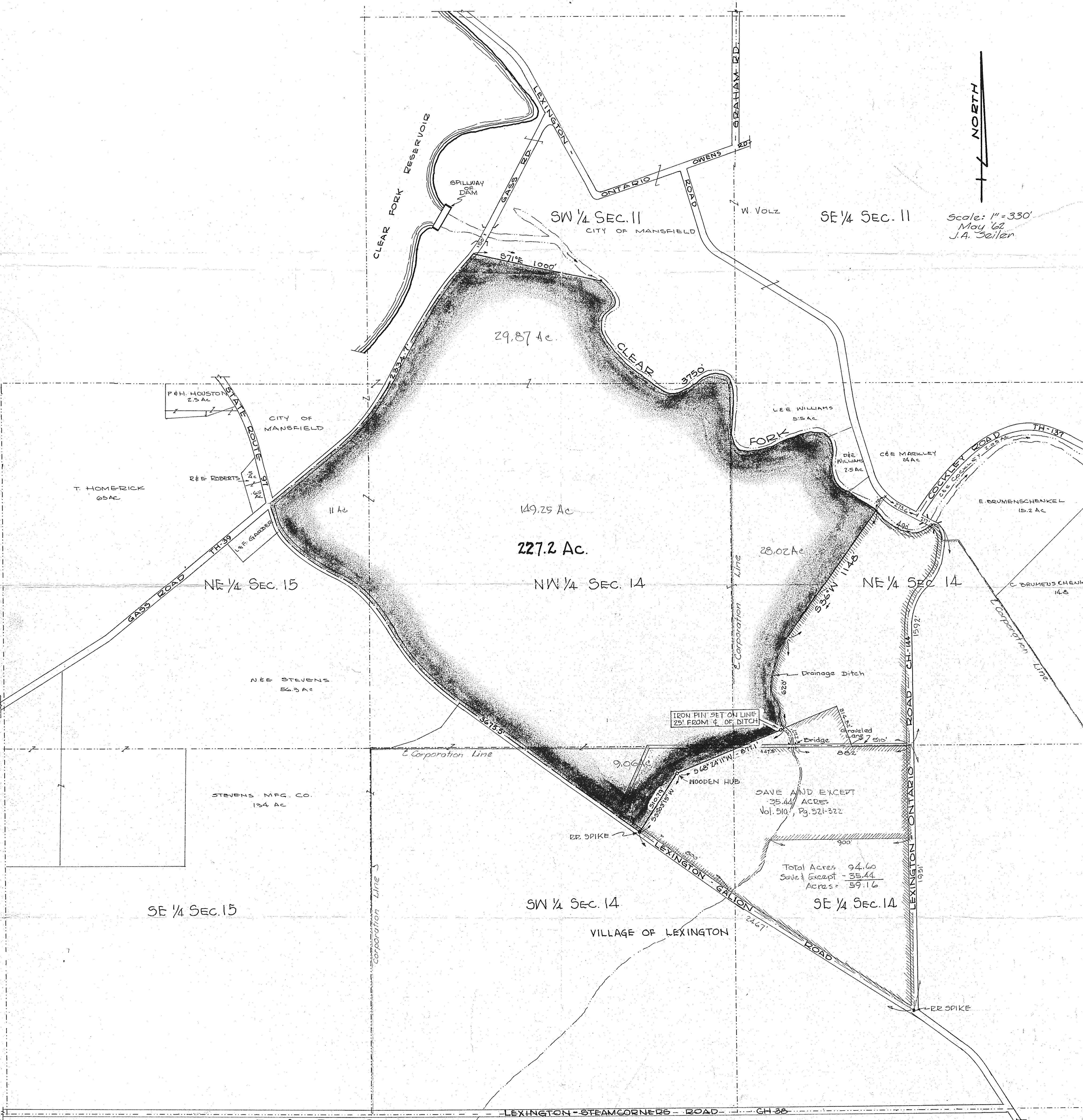




Scale: 1" = 330'  
May '62  
J.A. Seiler



29.87 Ac.

SW 1/4 SEC. 11  
CITY OF MANSFIELD

SE 1/4 SEC. 11

P.H. HOUSTON  
2.5 AC

CITY OF MANSFIELD

T. HOMERICK  
65 AC

R.E. ROBERTS  
1.5 AC

11 AC

149.25 Ac.

227.2 Ac.

NW 1/4 SEC. 14

LEE WILLIAMS  
5.5 AC

D.E. WILLIAMS  
2.5 AC

C.E. MARZLEY  
24 AC

E. DRUMSCHENKEL  
15.2 AC

NE 1/4 SEC. 15

N.E. STEVENS  
56.3 AC

STEVENS MFG. CO.  
134 AC

28.02 Ac.

NE 1/4 SEC. 14

IRON PIN SET ON LINE  
25' FROM C. OF DITCH

SAVE AND EXCEPT  
35.44 ACRES  
Vol. 510, Pg. 321-322

Total Acres 94.60  
Save & Except - 35.44  
Acres = 59.16

SE 1/4 SEC. 15

SW 1/4 SEC. 14

VILLAGE OF LEXINGTON

SE 1/4 SEC. 14

TWP. 20. - RANGE 19

TROY TOWNSHIP AND  
VILLAGE OF LEXINGTON  
RICHLAND COUNTY, OHIO

REV. 10-19-62 - 227.2 AC. J.A. Seiler  
REV. 9-1-60 AC - 7-10-62 J.A. Seiler