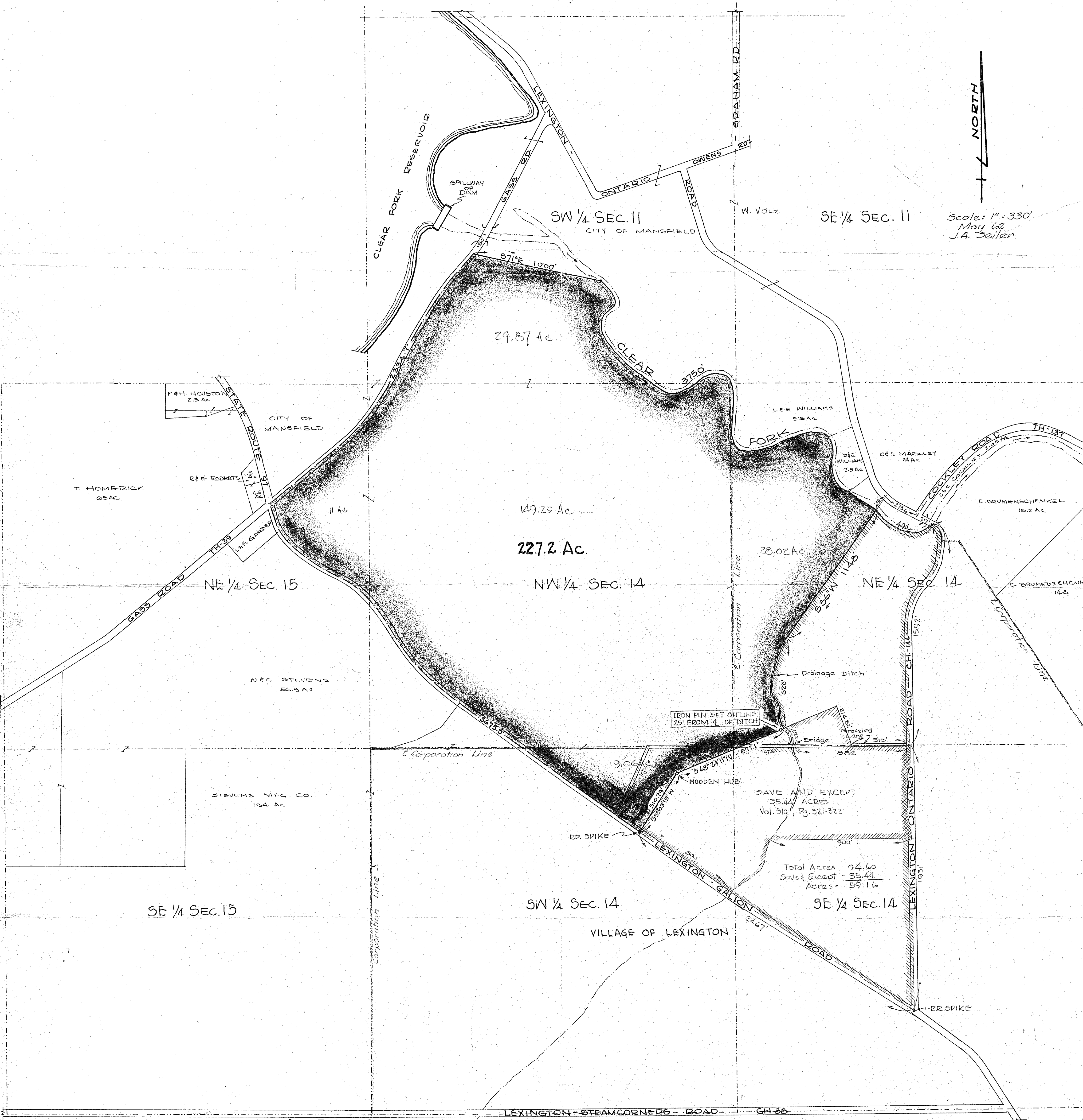




Scale: 1" = 330'  
May '62  
J.A. Seiler



29.87 Ac.

149.25 Ac.

227.2 Ac.

NW 1/4 SEC. 14

28.02 Ac.

NE 1/4 SEC. 14

9.06 Ac.

SW 1/4 SEC. 14

SE 1/4 SEC. 14

SAVE AND EXCEPT  
35.44 ACRES  
Vol. 510, Pg. 321-322

Total Acres 94.60  
Save & Except - 35.44  
Acres = 59.16

TWP. 20. - RANGE 19

TROY TOWNSHIP AND  
VILLAGE OF LEXINGTON  
RICHLAND COUNTY, OHIO

REV. 10-19-62 - 227.2 AC. J.A. Seiler  
REV. 9-1-60 AC - 7-10-62 J.A. Seiler