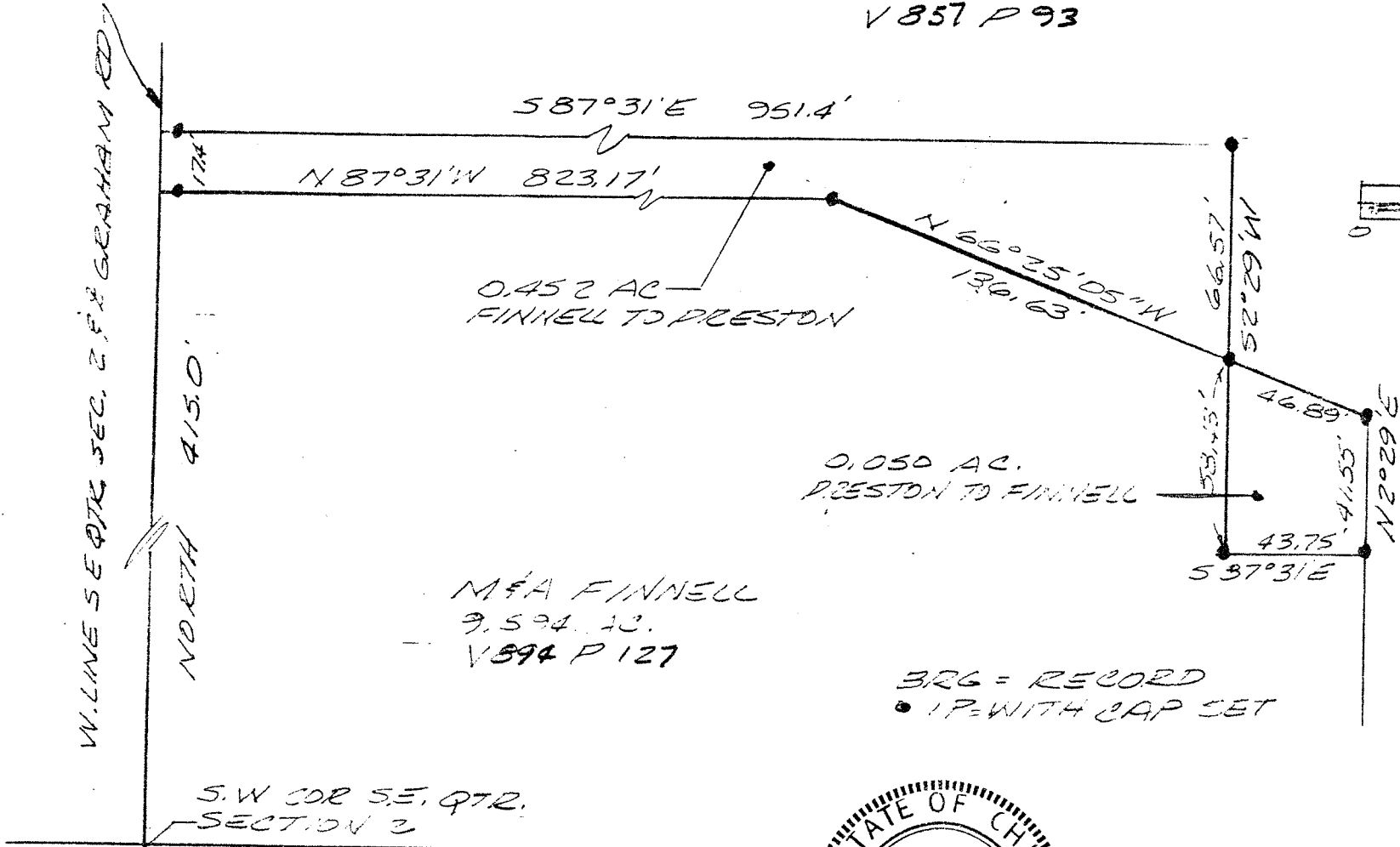
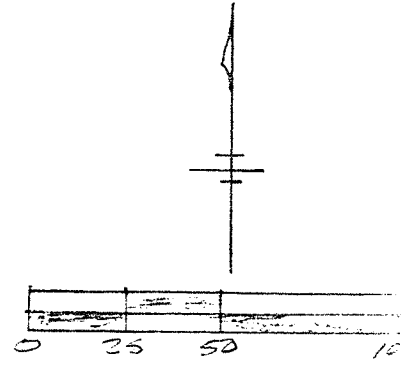


W.L. PRESTON
45.903 AC
V 857 P 93



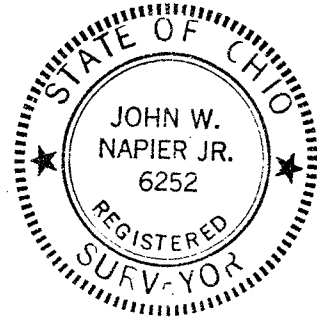
0.452 AC
FINNELL TO PRESTON

0.050 AC.
PRESTON TO FINNELL

M&A FINNELL
9.594 AC.
V 894 P 127

326 = RECORD
• 1P WITH CAP SET

S.W. COR SE, QTR.
SECTION 2



SURVEY PLAT

PT. SE QTR SEC. 2
T. 2 N. R. 10 E. S. 27 T. 2 N. R. 10 E. S. 27 T. 2 N. R. 10 E. S. 27 T. 2 N. R. 10 E. S. 27

SURVEYED BY
John W. Napier Jr. 11/14/01
JOHN W. NAPIER JR.
P.S. #6252