

PART 5
32.629 AC.

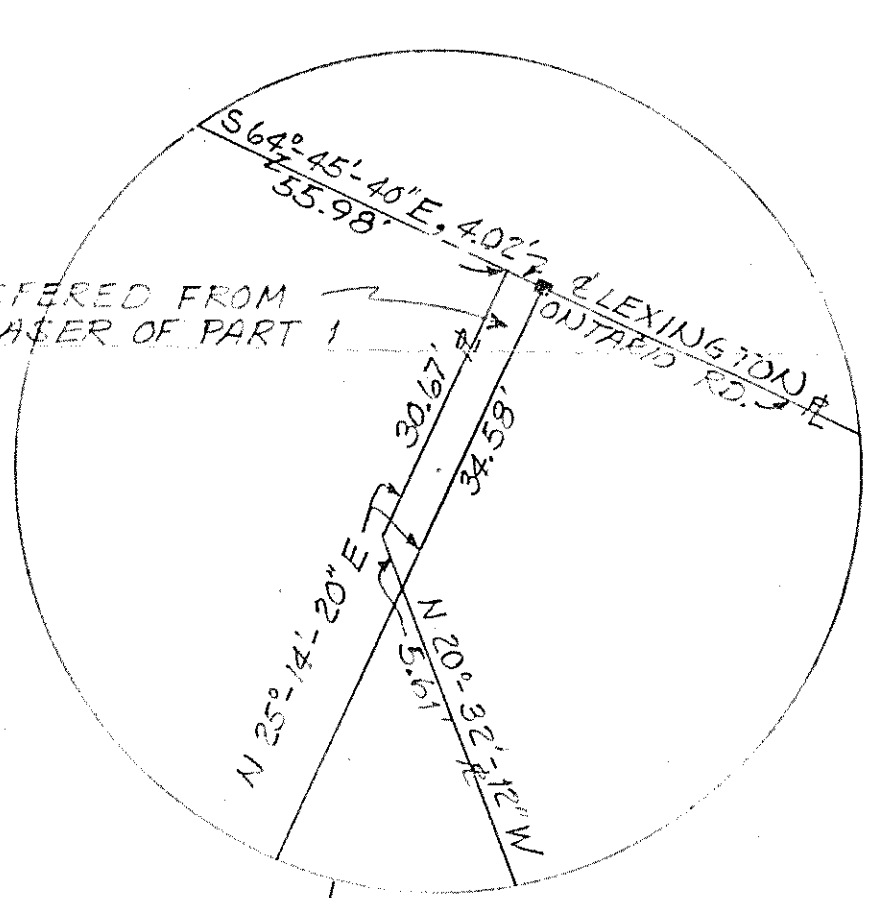
PART 7
4.500 AC.

PART 1
62.387 AC.
LESS
PART 7 - 4.500 AC.
TOTAL 57.887 AC.

PART 4 TO BE TRANSFERRED
TO KATHERINE LUTZ

PART 3 TO BE TRANSFERRED
TO GLENN H. STEVENSON

0.003 AC. TRANSFERRED FROM
KATHERINE LUTZ TO THE PURCHASER OF PART 1



$\Delta = 87^{\circ} 34' 54''$
 $R = 225.00'$
 $A = 342.93'$
 $C = 311.41'$
 $S 23^{\circ} 45' 27'' W$

- IRON PIN FOUND
- IRON PIN SET
- SPIKE SET