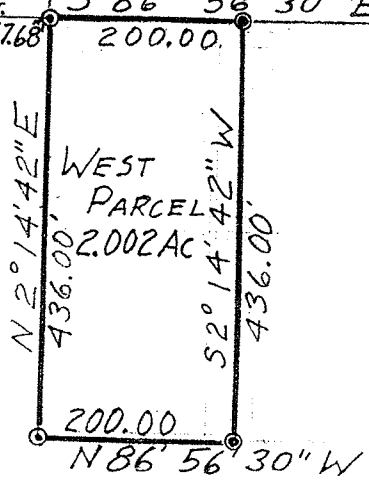
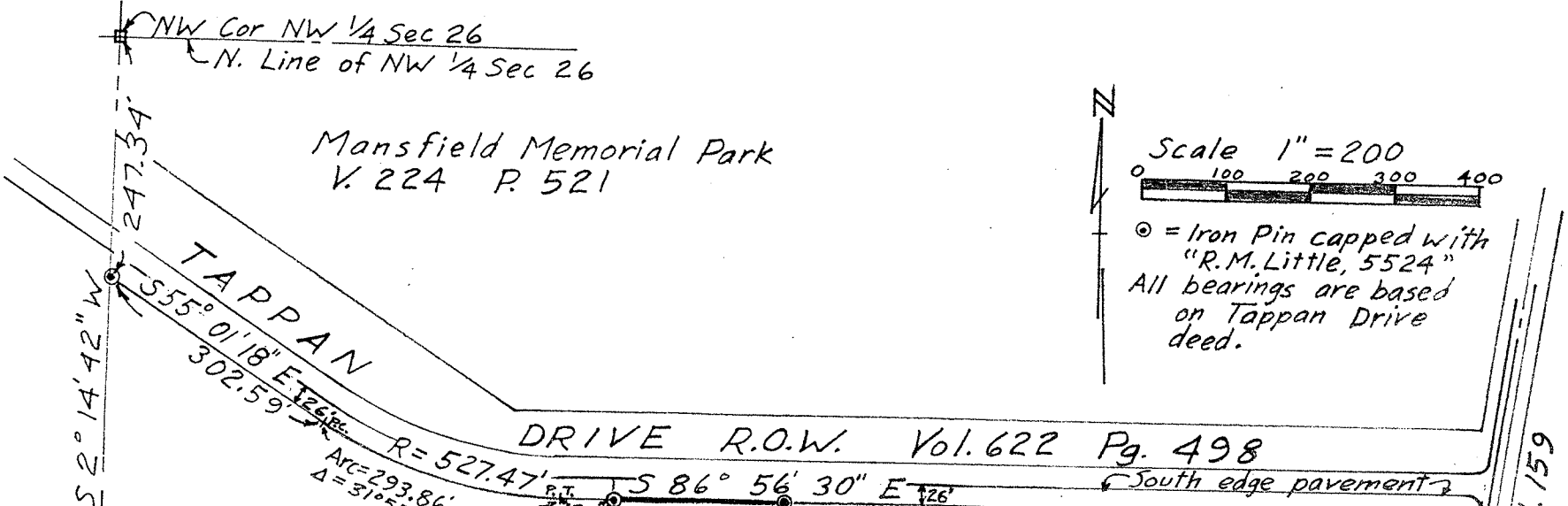
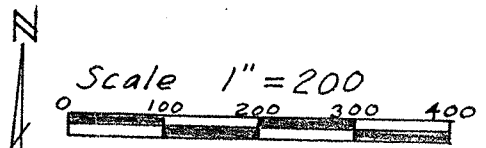


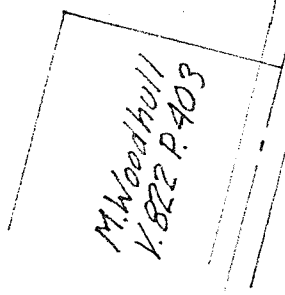
NW Cor NW 1/4 Sec 26
N. Line of NW 1/4 Sec 26

Mansfield Memorial Park
V. 224 P. 521



LOT ON TAPPAN DRIVE
IN CHAMBERS FARM
PART OF NW 1/4 SECTION 26
SPRINGFIELD TOWNSHIP
RICHLAND COUNTY, OHIO

Robert M. Little
Robert M. Little
Registered Surveyor # Ohio 5524
September 19, 1987



J. & D. Chambers
& K. Booth
V. 554 P. 109

W. Line of NW 1/4 Sec 26

Chambers Rd - T.H. 159