

Copy For You

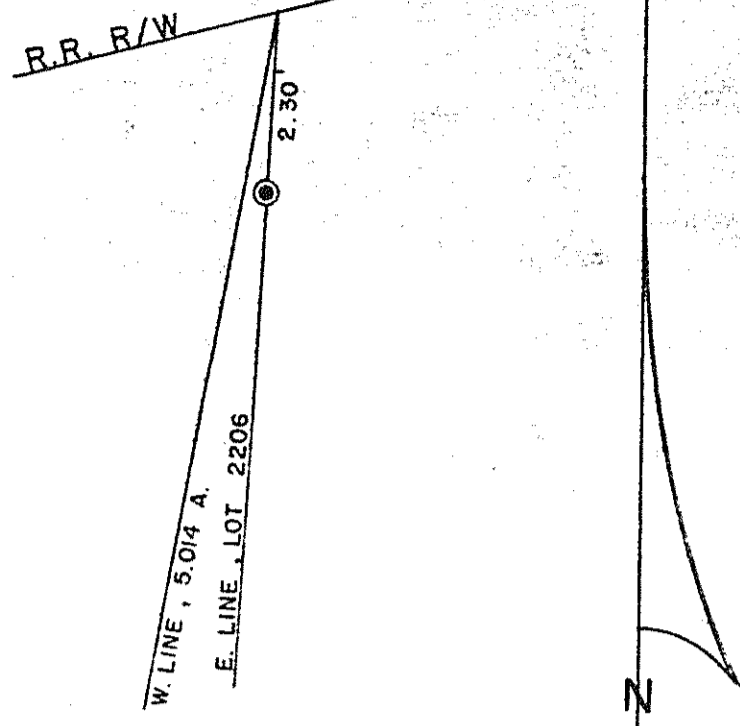
DETAIL - NO SCALE

PLAT OF BOUNDARY SURVEY

DON McENTEER
PART OF THE NORTHEAST QUARTER, SECTION TWENTY-FOUR (24)
TOWNSHIP TWENTY-ONE (21), RANGE NINETEEN (19), SPRINGFIELD TOWNSHIP
VILLAGE OF ONTARIO, RICHLAND COUNTY, OHIO

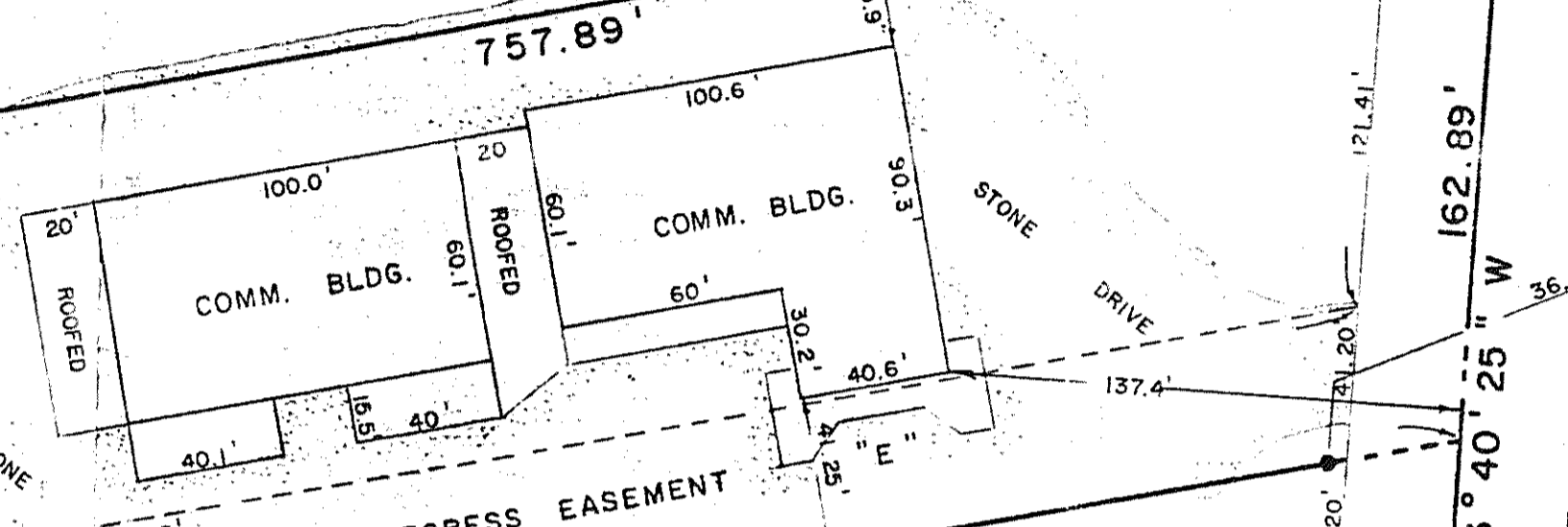
EACH EASEMENT CONTAINS 18,606 Sq. Ft.

BEARINGS ARE BASED ON A SURVEY BY
JUSTIN SEILER, DATED OCT. 31, 1978



ERIE R.R. - 100'

SINGLE TRACK



ELSKO REALTY CO. INC.
D. 481 / 520
5.014 A.

PARCEL B
3.504 ACRES

PARCEL A
2.162 ACRES

PARCEL C
3.611 ACRES

PARCEL D
OVERLAP AREA FROM
LOT 2206 - 1,207 S.F.
0.028 ACRE

JOYCE LEW
D. 788 / 686
0.631 A.

BERNARD - JOYCE WEBB
O.R. 18 / 613
0.698 A.

ELSKO REALTY CO. INC.
D. 782 / 366
4.966 A.

(0.657 A.)

(1.505 A.)

STA-MAN LIMITED PARTNERSHIP
D. 917 / 357
LOT 2206

N 5° 37' 57" E 299.71'
N 4° 04' 52" E 297.46'

N 2° 20' 52" E 268.25'

N 2° 20' 52" E 200.00'

N 2° 20' 52" E 140'

N 4° 04' 52" E 297.46'

N 4° 04' 52" E 297.46'

N 4° 04' 52" E 297.46'

N 4° 04' 52" E 297.46'

N 4° 04' 52" E 297.46'

N 4° 04' 52" E 297.46'

N 4° 04' 52" E 297.46'

N 4° 04' 52" E 297.46'

N 4° 04' 52" E 297.46'

N 4° 04' 52" E 297.46'

N 4° 04' 52" E 297.46'

N 4° 04' 52" E 297.46'

N 4° 04' 52" E 297.46'

N 4° 04' 52" E 297.46'

N 4° 04' 52" E 297.46'

N 4° 04' 52" E 297.46'

N 4° 04' 52" E 297.46'

N 4° 04' 52" E 297.46'

N 4° 04' 52" E 297.46'

N 4° 04' 52" E 297.46'

N 4° 04' 52" E 297.46'

N 4° 04' 52" E 297.46'

N 4° 04' 52" E 297.46'

N 4° 04' 52" E 297.46'

N 4° 04' 52" E 297.46'

N 4° 04' 52" E 297.46'

N 4° 04' 52" E 297.46'

N 4° 04' 52" E 297.46'

N 4° 04' 52" E 297.46'

N 4° 04' 52" E 297.46'

N 4° 04' 52" E 297.46'

N 4° 04' 52" E 297.46'

N 4° 04' 52" E 297.46'

N 4° 04' 52" E 297.46'

N 4° 04' 52" E 297.46'

N 4° 04' 52" E 297.46'

N 4° 04' 52" E 297.46'

N 4° 04' 52" E 297.46'

N 4° 04' 52" E 297.46'

N 4° 04' 52" E 297.46'

N 4° 04' 52" E 297.46'

N 4° 04' 52" E 297.46'

N 4° 04' 52" E 297.46'

N 4° 04' 52" E 297.46'

N 4° 04' 52" E 297.46'

N 4° 04' 52" E 297.46'

N 4° 04' 52" E 297.46'

N 4° 04' 52" E 297.46'

N 4° 04' 52" E 297.46'

N 4° 04' 52" E 297.46'

N 4° 04' 52" E 297.46'

N 4° 04' 52" E 297.46'

N 4° 04' 52" E 297.46'

N 4° 04' 52" E 297.46'

N 4° 04' 52" E 297.46'

N 4° 04' 52" E 297.46'

N 4° 04' 52" E 297.46'

N 4° 04' 52" E 297.46'

N 4° 04' 52" E 297.46'

N 4° 04' 52" E 297.46'

N 4° 04' 52" E 297.46'

N 4° 04' 52" E 297.46'

N 4° 04' 52" E 297.46'

N 4° 04' 52" E 297.46'

N 4° 04' 52" E 297.46'

N 4° 04' 52" E 297.46'

N 4° 04' 52" E 297.46'

N 4° 04' 52" E 297.46'

N 4° 04' 52" E 297.46'

N 4° 04' 52" E 297.46'

N 4° 04' 52" E 297.46'

N 4° 04' 52" E 297.46'

N 4° 04' 52" E 297.46'

N 4° 04' 52" E 297.46'

N 4° 04' 52" E 297.46'

N 4° 04' 52" E 297.46'

N 4° 04' 52" E 297.46'

N 4° 04' 52" E 297.46'

N 4° 04' 52" E 297.46'

N 4° 04' 52" E 297.46'

N 4° 04' 52" E 297.46'

N 4° 04' 52" E 297.46'

N 4° 04' 52" E 297.46'

N 4° 04' 52" E 297.46'

N 4° 04' 52" E 297.46'

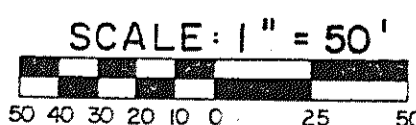
N 4° 04' 52" E 297.46'

N 4° 04' 52" E 297.46'

N 4° 04' 52" E 297.46'

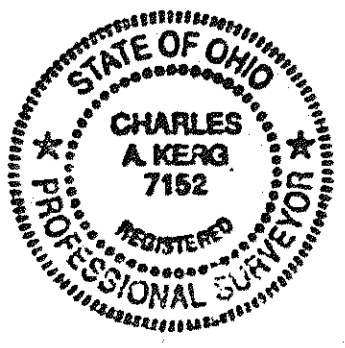
N 4° 04' 52" E 297.46'

N 4° 04' 52" E 297.46'



- LEGEND
- IRON PIPE FOUND
 - △ IRON PIN FOUND "SEILER, 6869"
 - ⊙ MONUMENT FOUND "R.E.L. - ROB. A. CUNNING, RLS 4939"
 - ⊙ RAILROAD SPIKE FOUND
 - 5/8" IRON PIN SET WITH CAP STAMPED "C. KERG, RLS 7152"

APPROVED
ONTARIO PLANNING COMMISSION
DATE Sept 11, 1991
SIGNATURE Robert Wagner



PREPARED BY
KERG SURVEYING
Charles A. Kerg
CHARLES A. KERG
REGISTERED OHIO SURVEYOR NO. 7152
DATE: SEPTEMBER 9, 1991

HOME RD.

NUSSBAUM PKWY. - 60'

SECOND SPIKE FD.
1.00' S.