

DESCRIPTION PARCEL # 1

DESCRIPTION OF A PARCEL OF REAL ESTATE SITUATED IN THE SE.1 SEC.13 TWP.21, R 19 SPRINGFIELD TOWNSHIP, RICHLAND COUNTY AND STATE OF OHIO. AND MORE PARTICULARY DESCRIBED AS FOLLOWS.

BEGINNING AT A POINT IN THE CENTER LINE OF STATE HIGHWAY #501 SAID POINT BEING 315' EAST OF THE E. SEC. LINE OF SAID SECTION.

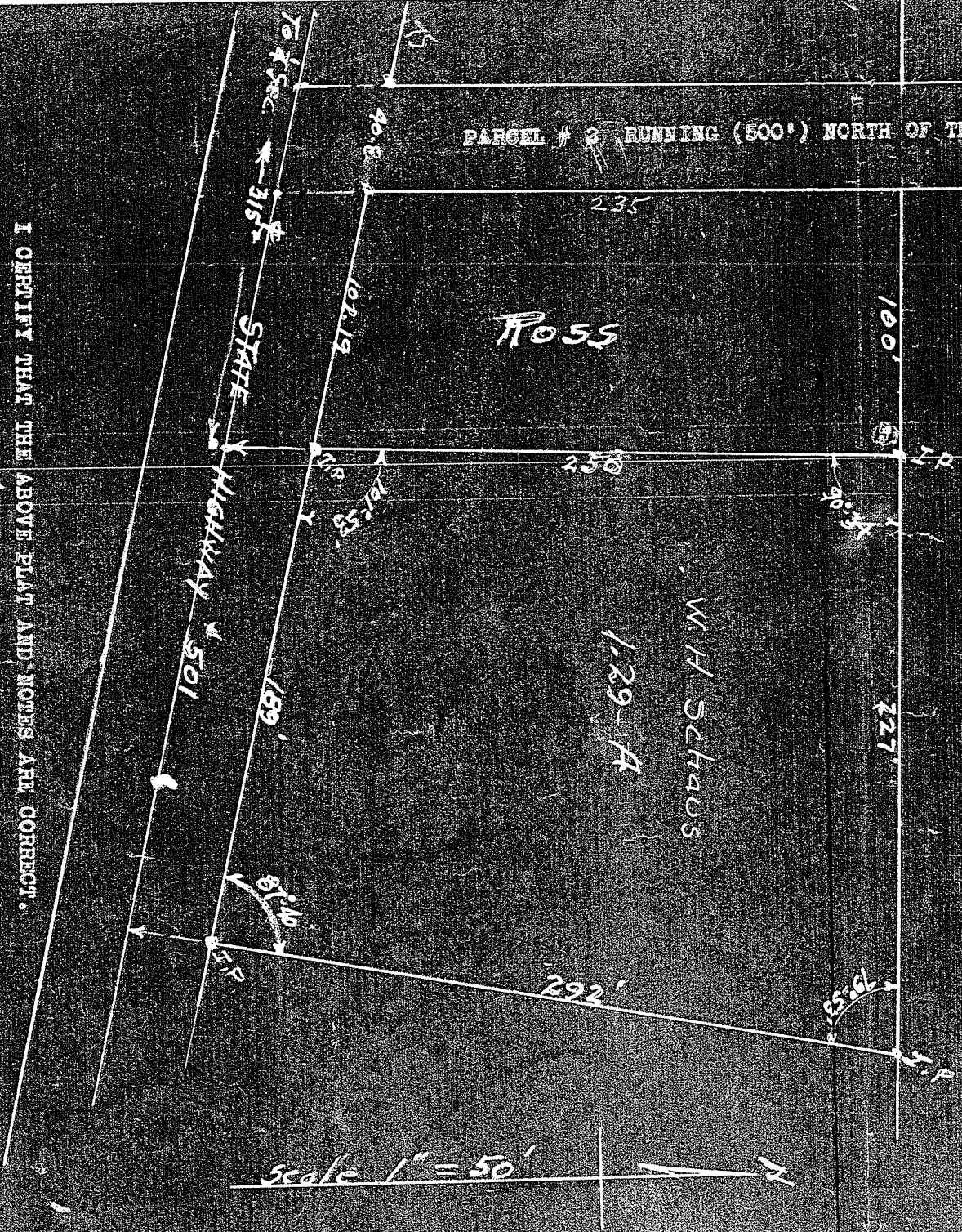
THENCE BY AN INTERNAL ANGLE OF $(101^{\circ}40')$ TO THE LT. A DISTANCE OF $(250')$ THENCE EAST BY AN INTERNAL ANGLE OF $(90^{\circ}27')$ A DISTANCE OF $(227')$ THENCE BY AN INTERNAL ANGLE OF $(79^{\circ}53')$ TO LT. A DISTANCE OF $(292')$ TO THE CENTER LINE OF STATE HIGHWAY #501 THENCE BY AN INTERNAL ANGLE OF $(87^{\circ}40')$ TO RT. A DISTANCE OF $189'$ IN THE CENTER LINE OF STATE HIGHWAY #501 TO THE PLACE OF BEGINNING CONTAINING 1.29 ACRES MORE OR LESS.

DESCRIPTION PARCEL # 2

BEGINNING AT A POINT IN THE CENTER LINE OF STATE HIGHWAY # 501 SAID POINT BEING $(178.01')$ EAST OF THE SECTION LINE OF SAID SECTION.

THENCE NORTH BY AN INTERNAL ANGLE OF $(78-27')$ TO THE RIGHT A DISTANCE OF $(500')$ THENCE EAST A DISTANCE OF $(40')$ THENCE SOUTH PARALLEL WITH THE SECTION LINE A DISTANCE OF $(500')$ TO THE CENTER LINE OF STATE HIGHWAY # 501 THENCE WEST ALONG THE CENTER LINE OF SAID HIGHWAY $(40.8')$ TO THE PLACE OF BEGINNING.

PARCEL # 2 RUNNING (500') NORTH OF THE CENTER LINE OF STATE HIGHWAY #501



I CERTIFY THAT THE ABOVE PLAT AND NOTES ARE CORRECT.

W. O. Brown
REGISTERED SURVEYOR #985