

R. & E. CLINE

R/W Line

244.72'
N 00° 56' 41" E

260.00'
N 89° 37' 19" W
244.72'
S 00° 56' 41" W
260.00'
S 89° 37' 19" E

724.68' WEST LINE, NW 1/4, SEC 13
665.03
59.65'
100.42'
80.01'
N 89° 52' 41" E
N 11° 28' 25" E - 136.82'
S 11° 28' 23" W - 133.45'
N 07° 17' 00" E - 362.30'
S 07° 17' 00" W - 350.08'

R/W Line
LEXINGTON-SPRINGMILL ROAD
(C.H. 133) 80' R/W

NORTH WEST CORNER,
NORTHWEST QUARTER,
SECTION 13

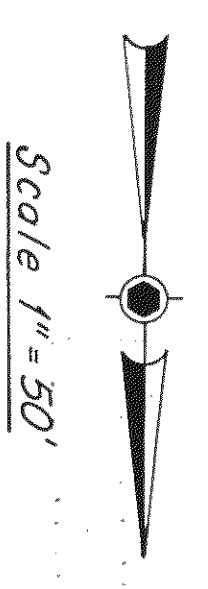
U.S. ROUTE 30
BY-PASS

NORTH LINE, NW 1/4, SEC. 13

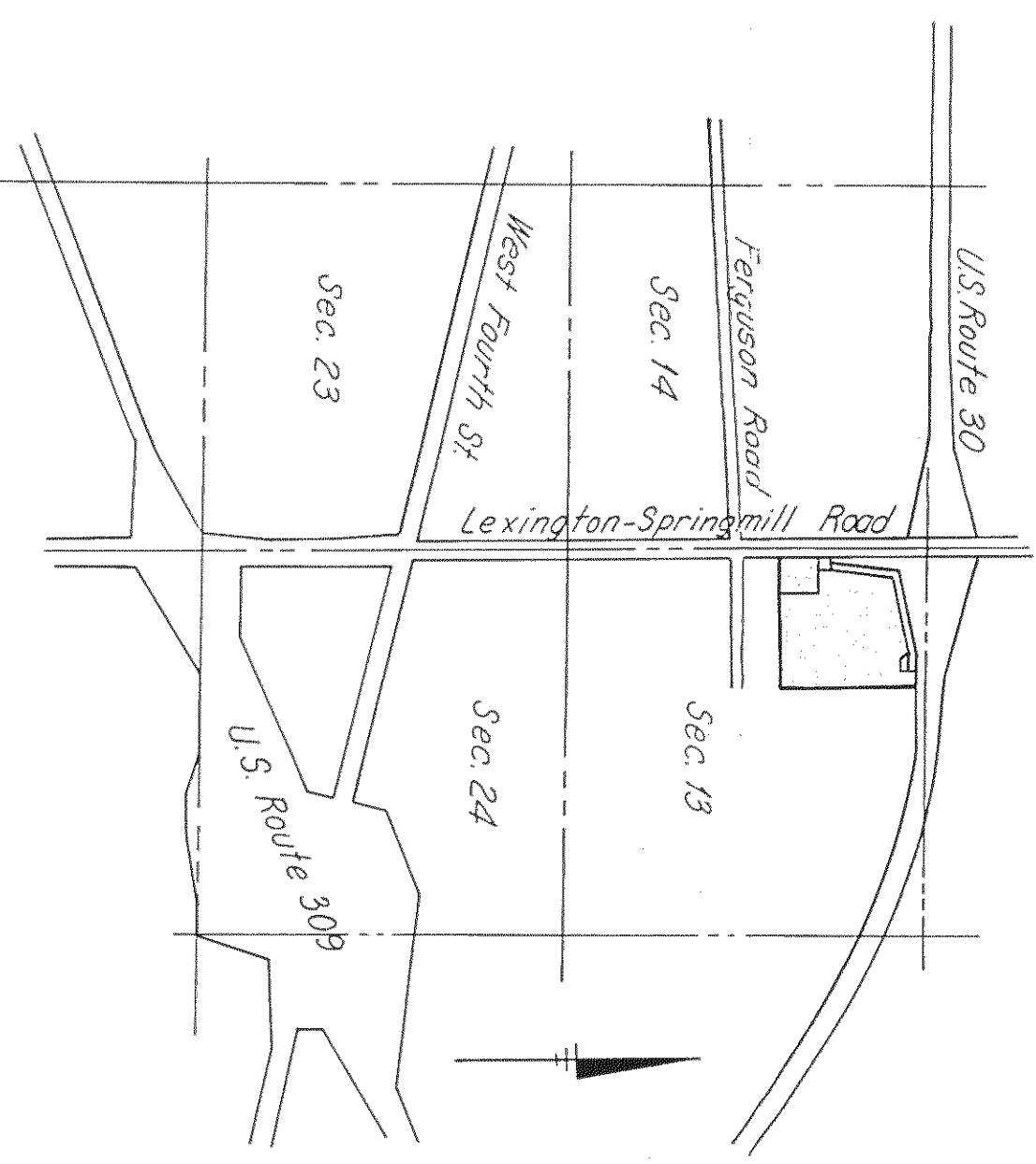
14.07 AC

951.18'
S 00° 53' 52" W
PAUL C. SCOTT

N 25° 45' 24" W - 33.00'
S 88° 56' 11" E - 70.00'
N 00° 53' 52" E - 70.00'
S 88° 56' 11" E - 70.00'
N 00° 53' 52" E - 70.00'
S 88° 56' 11" E - 70.00'
N 25° 45' 24" W - 33.00'
S 88° 56' 11" E - 70.00'
N 00° 53' 52" E - 70.00'
S 88° 56' 11" E - 70.00'



Scale 1" = 50'
● - Iron Pin found
○ - Iron Pin Set



LOCATION MAP
no scale

Robert A. Cunniff
ROBERT A. CUNNIFF
REG SURVEYOR No. 4939

REL
RICHLAND ENGINEERING LIMITED
MANSFIELD, OHIO

Property Survey
for
FIRST NATIONAL BANK of MANSFIELD

Being Part of NW 1/4, Sec. 13
Twp. 21, R. 19, Springfield Twp.
Richland County, Ohio

DESIGNED	DRAWN	TRACED	CHECKED	REVIEWED	DATE	REVISED
PHL						