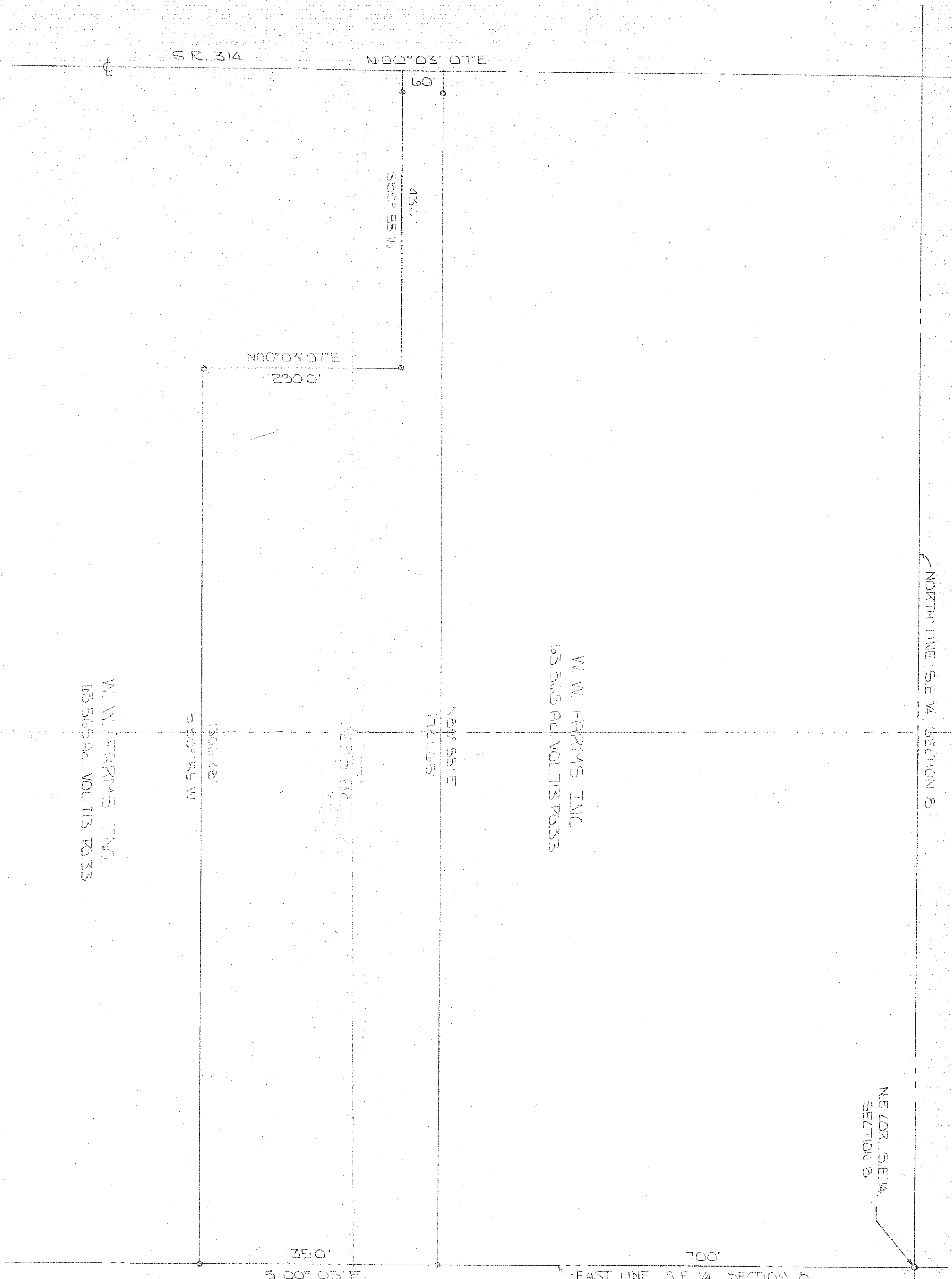


CRESTLINE VILLAGE  
40.0 Ac.



NORTH LINE, S.E. 1/4, SECTION 8

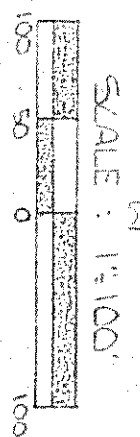
NE COR., S.E. 1/4, SECTION 8

W.W. FARMS INC.  
63.565 AC. VOL. 713 PG. 33

W.W. FARMS INC.  
63.565 AC. VOL. 713 PG. 33

E. E. SHAFER  
144.02 AC. VOL. 566 PG. 161

PLAT OF SURVEY  
FOR  
W.W. FARMS INC.  
BEING PART OF THE SOUTHEAST  
1/4, SECTION 8, TOWNSHIP 21, RANGE  
19, SPRINGFIELD TOWNSHIP, RICH-  
LAND COUNTY, OHIO. 7-21-86



0-1/2 RE BAR SET  
BASIS OF BEARINGS:  
SURVEY BY T.A. SEILER  
OCT. 16, 1923

83  
T.A. Seiler  
CRESTLINE, OHIO 43020