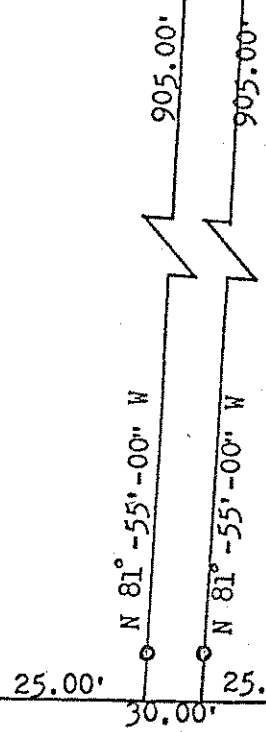


Scale 1" = 1000

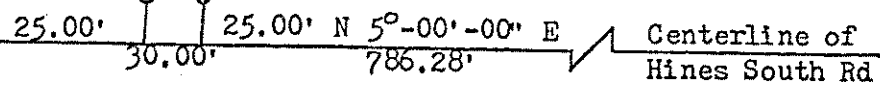
2.022 Acres



I certify this plot to be a true representation of a survey made by Robert G. Calhoun, Reg. Surveyor #5847
Robert G. Calhoun

NW 1/4

Centerline of Section 23



Approved Richland County Regional Planning Commission
 No further transfers without subdivision plat.

John R. Swanson
 John R. Swanson Director-Secretary
January 4, 1977
 Date