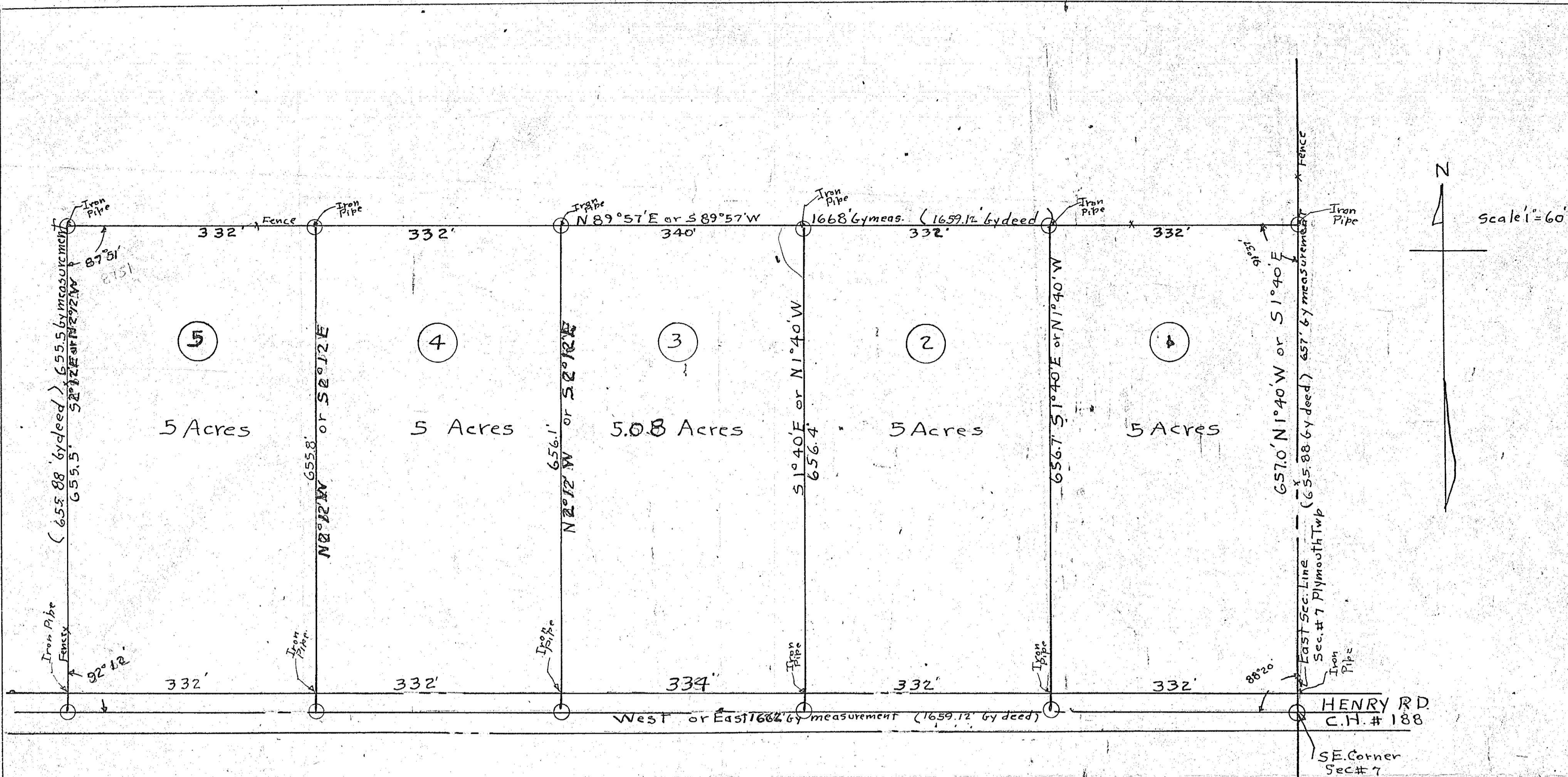


FINAL SURVEY	SURVEYED	DATE
NOTE BOOK	PLOTTED	
NO.	TEMPLATE	
	AREAS CHECKED	



Scale 1" = 60'

SURVEY FOR SANFORD WHITE
 S.W. 1/4 Sec. # 7 Plymouth Twp. Richland Co. Ohio
 H.E. Sword Lic. Surv. # 933

Being a part of the SW 1/4 Sec # 7 T-23-R-19 Richland County, Ohio & Beginning for the same at a point on the South 1/4 Section Line of said Section in the center line of Henry Rd County Hwy # 188.
 Note: The above two lines are a preface for all following descriptions

- Parcel # 1** Said point being located at the S.E. Corner of said 1/4 Section
 Thence 90° 0' West along South 1/4 Sec Line 332 ft to a point; Thence N 1° 40' W 656.7 ft to a point;
 Thence N 89° 57' East 332 ft to intersection with East 1/4 Sec Line; Thence S 1° 40' E along with E 1/4 Sec Line 657 ft to the place of beginning & containing 5 Acres but subject to all legal highways
- Parcel # 2** Said point being located 332 ft westerly from the S.E. Cor of said 1/4 Section
 Thence 90° 0' West along South 1/4 Sec Line 332 ft to a point; Thence N 1° 40' W 656.4 ft to a point;
 Thence N 89° 57' East 332 ft to a point; Thence S 1° 40' E 656.7 ft to the place of beginning & containing 5 Acres but subject to all legal highways
- Parcel # 3** Said point being located 664 ft westerly from the S.E. Cor of 1/4 Sec.
 Thence 90° 0' West along South 1/4 sec. Line 334 ft to a point; Thence N 2° 12' W 656.1 ft to a point;
 Thence N 89° 57' East 340 ft to a point; Thence S 1° 40' E 656.4 ft to the place of beginning & containing 5.08 Acres but subject to all legal highways
- Parcel # 4** Said point being located 998 ft westerly from the S.E. Cor of 1/4 Sec.
 Thence 90° 0' West along South 1/4 Sec Line 332 ft to a point; Thence N 2° 12' W 655.8 ft to a point;
 Thence N 89° 57' East 332 ft to a point; Thence S 2° 12' E 656.1 ft to the place of beginning & containing 5 Acres but subject to all legal highways
- Parcel # 5** Said point being located 1330 ft westerly from the S.E. Cor of 1/4 Sec.
 Thence 90° 0' West along South 1/4 Sec Line 332 ft to a point; Thence N 2° 12' W 655.5 ft to a point;
 Thence N 89° 57' East 332 ft to a point; Thence S 2° 12' E 655.8 ft to the place of beginning & containing 5 Acres but subject to all legal highways

ORIGINAL SURVEY	SURVEYED	DATE
NOTE BOOK	PLOTTED	
NO.	TEMPLATE	
	AREAS CHECKED	