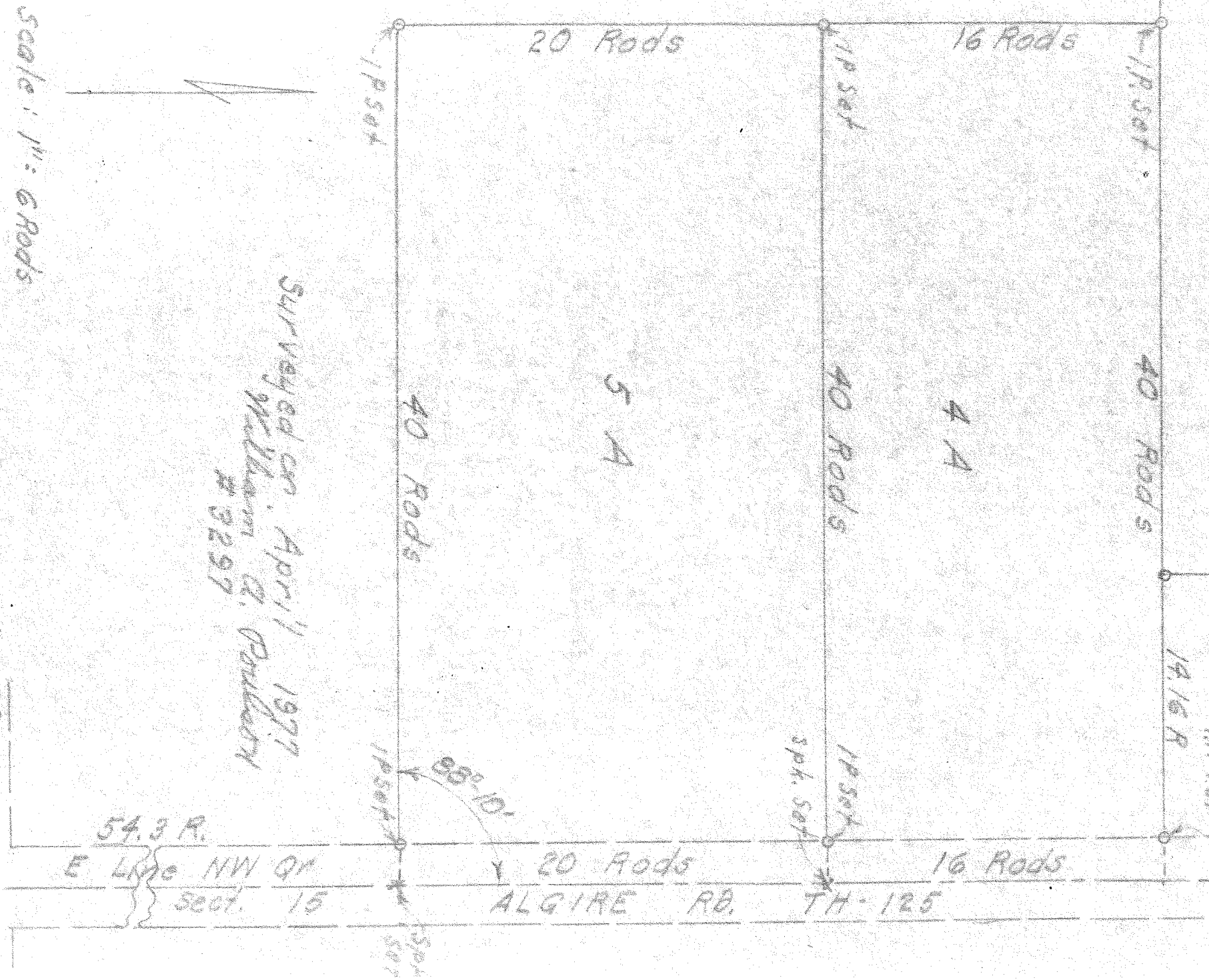


M. Oates

PERRY TWP
RICHLAND COUNTY
NW QR SECTION 15
T-19, R-19
O. Parsons



Scale: 1" = 6 Rods

Surveyed on April 11 1977
William D. Paulsen
#3297

WOODBURY RD.
S Line NW QR Sect. 15

54.3 R.
E Line NW QR
Sect. 15

20 Rods 16 Rods
ALGIRE RD. TH-125

J.R. Conting

1/4 Rd.

40 Rods

4 A

40 Rods

5 A

20 Rods

16 Rods

1/2 set

1/2 set

1/2 set

40 Rods

1/2 set

sp. set

1/2 set

1/4 Rd.

20 Rods

16 Rods

sp. set