

MOCK ROAD

Ref  
12-16 1955

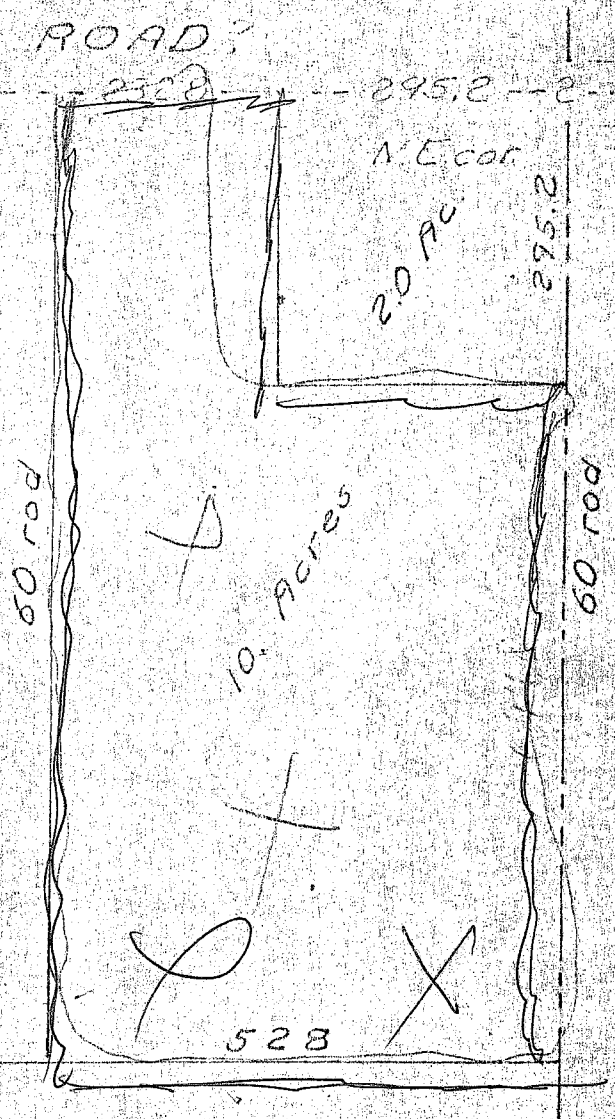
Richland County  
Perry Township  
Twp. 19-N Range 19-W  
Section 2  
Southwest Qt.

T. PARKER  
SURVEY

AUG. 1975

S. Horn, Sub. 831

No 30-74-70



being a part of the Southwest quarter of section 2 of Perry township, Richland County, Ohio. Described further.

Beginning at a point on the North line, 295.2 ft. West of the northeast corner, of said quarter at a lot corner.

Thence; West, 232.8 ft. with said North line.

Thence; South, 60 rod. parallel <sup>with</sup> the west line of said quarter to a lot line.

Thence; East, 528 ft. parallel <sup>with</sup> said North line, with a lot line and to said East line.

Thence; North, with said East line to a lot corner located 295.2 ft. South of said Northeast corner.

Thence; West, 295.2 ft. with a lot line and to a lot corner.

Thence: North, 295.2 ft. with a lot line to the place of beginning.

Containing 10.00 acres.

637-288

418-582