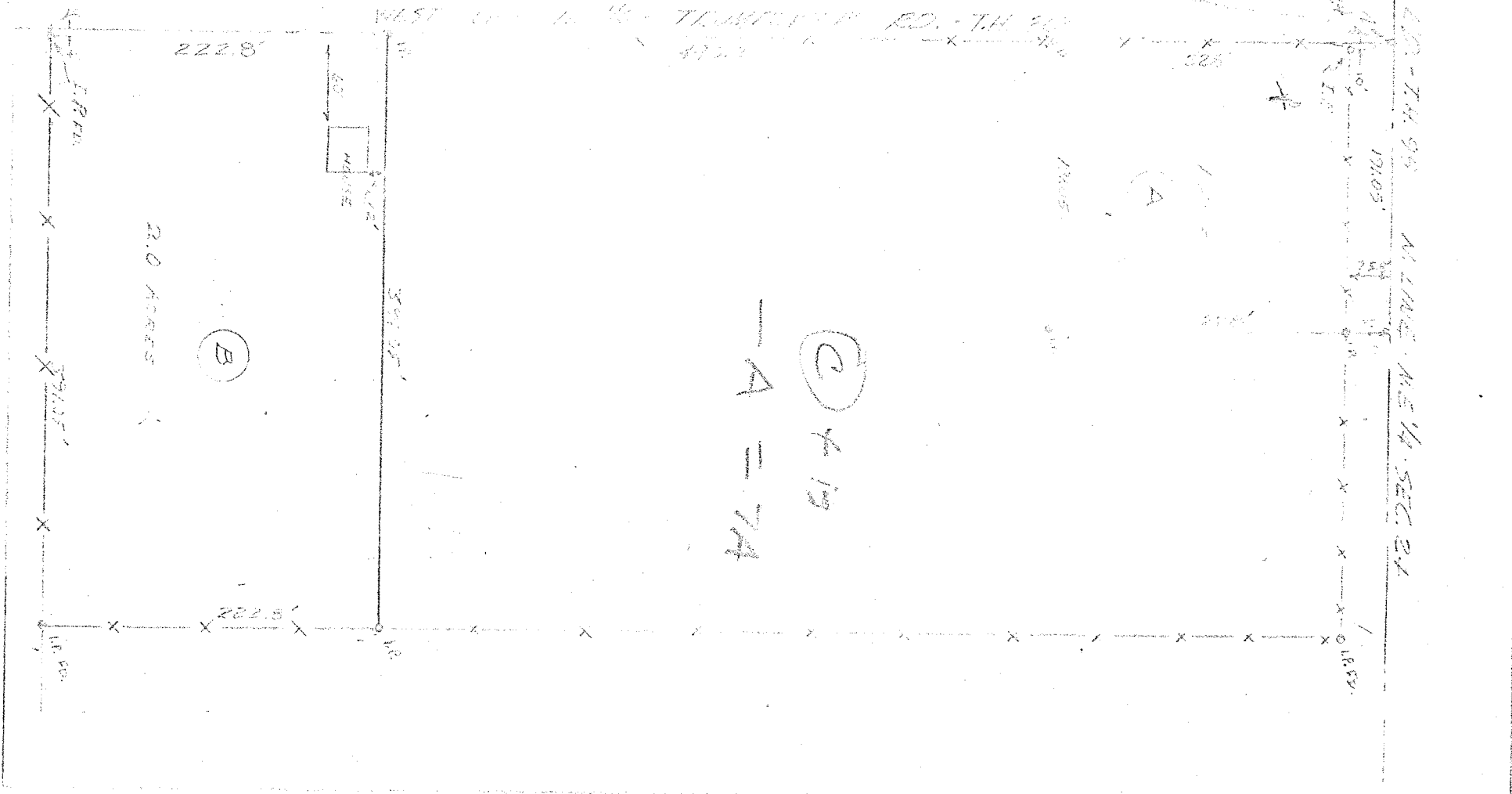


ARTHUR COLE PROPERTY
 N.E. 1/4 SECTION 24 - T. 14 N. R. 17 E.
 HILLARY COUNTY, IOWA

Survey Made
 on the 10th
 of June 1905
 by
 J. H. [unclear]

200.0' (1000')



222.8'

2.0 ACRES

(B)

HOUSE

(C) 4 1/2
 A = 74

SUBDIVISION OF T. 14 N. R. 17 E. N. E. 1/4 SEC. 24
 1905'

0.185'