

NISLANDER D.V. 756 P. 630

N 87° 52' 00" E 1274.38

FUNSTON D.V. 829 P. 496

1/4 NW 1/4: 24.222 AC.
 1/4 SW 1/4: 18.485 AC.
 TOTAL: 42.707 AC.

GEORGAKOPOV D.V. 909 P. 364

N 3° 12' 17" W 828.66'
 W. Line of NW 1/4 of Sec 20

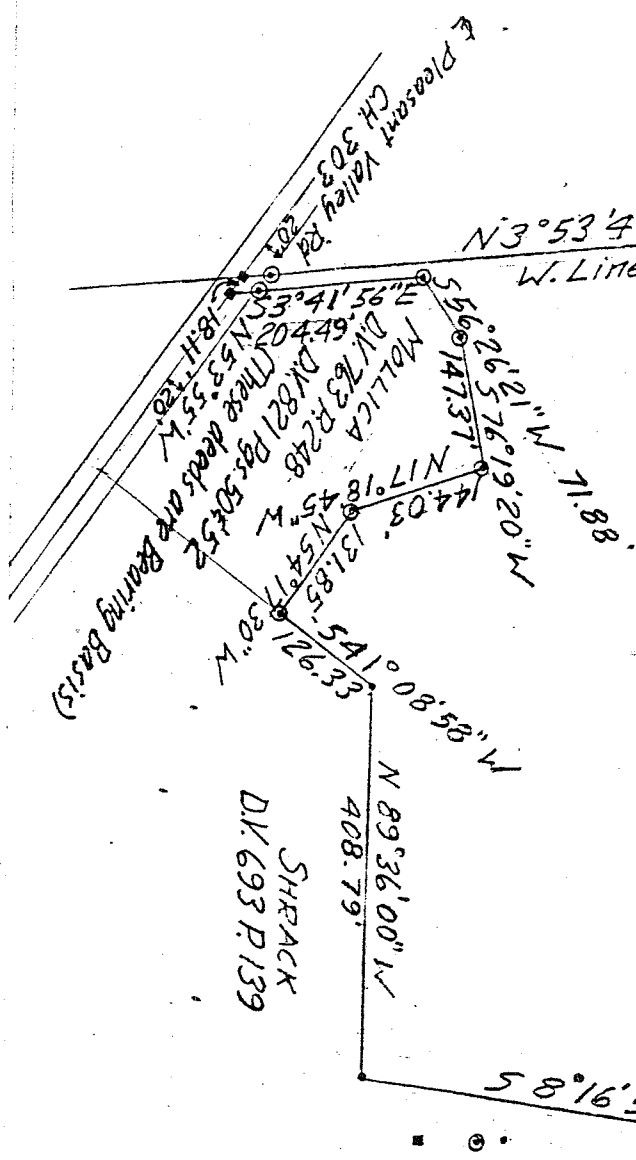
Wood Corner Post with I.P. set on East Side
 = NW Cor of SW 1/4

S. Line of NW 1/4 of Sec. 20
 N. Line of SW 1/4 of Sec. 20

53° 42' 14" E 823.00'
 LITWILER D.V. 313 P. 292

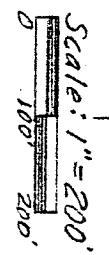
ALT O.R.V. 83 P. 997

N 3° 53' 47" W 934.94'
 W. Line of SW 1/4 Sec. 20



SHEPARD
 D.V. 693 P. 139

- = Iron Pin found
- ⊙ = Iron Pin capped
- = P.K. Nail set



DRAWING OF SURVEY FOR R. & C. RANDALL

PART OF SW 1/4 & NW 1/4 SECTION 20
 TOWNSHIP 22 RANGE 17
 MONROE TOWNSHIP
 RICHLAND COUNTY, OHIO

Robert M. Little
 Registered Surveyor # Ohio 5524
 November 19, 1991

