

N. 0° 47' E. 1831
N. LINE SEC. 14
MONROE
TWP.

STONE

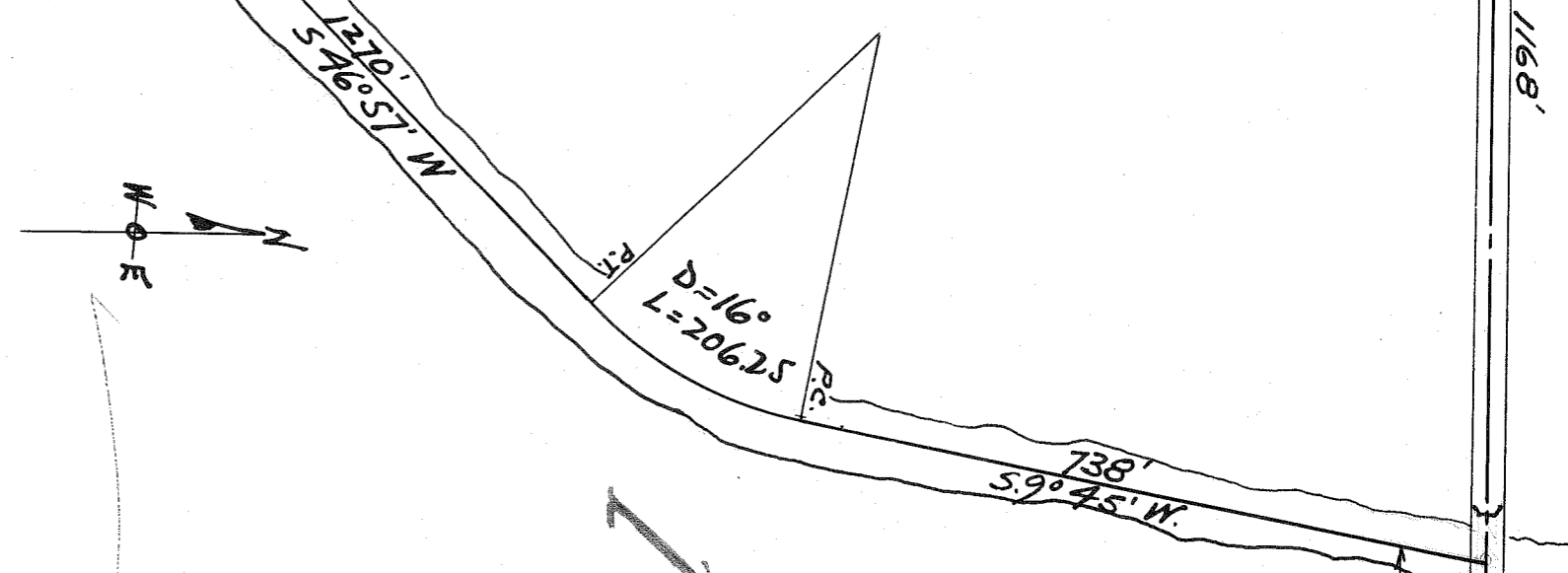
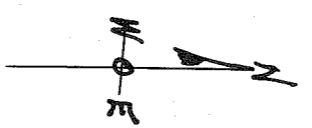
N. 89° 40' E. 1168'

46° 10'

32.84

120

MILLIGAN SURVEY
4-22-14
SW 1/4 SEC 12 T. 12 R. 17
Ch.B. - BY. B.W.
MONROE TWP.



110

X-81