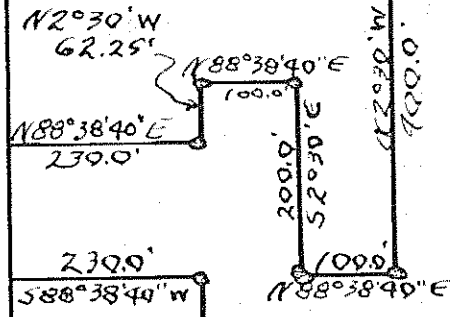


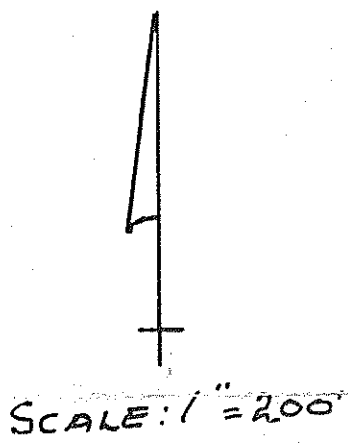
N88°38'40"E  
2300.0'

NE CORNER SW 1/4  
S21 T23 R17

2.75A



128.14A ±



WOLF ROAD  
TH# 298

N2°30'W  
2031.0'

710.0'  
S88°20'W

18.1A

1110.5'  
S1°52'E

S88°20'W 50.0'  
N2°30'W 50.0'

1380.0'  
S88°20'W

13.49A

N2°30'W  
1026.2'

330.0'  
S88°20'W

PETERSON ROAD  
TH# 295

1585.5'  
S1°52'E

PART OF SW 1/4, S21 T23 R17  
MIFFLIN TOWNSHIP  
RICHLAND COUNTY

C. F. Pollins