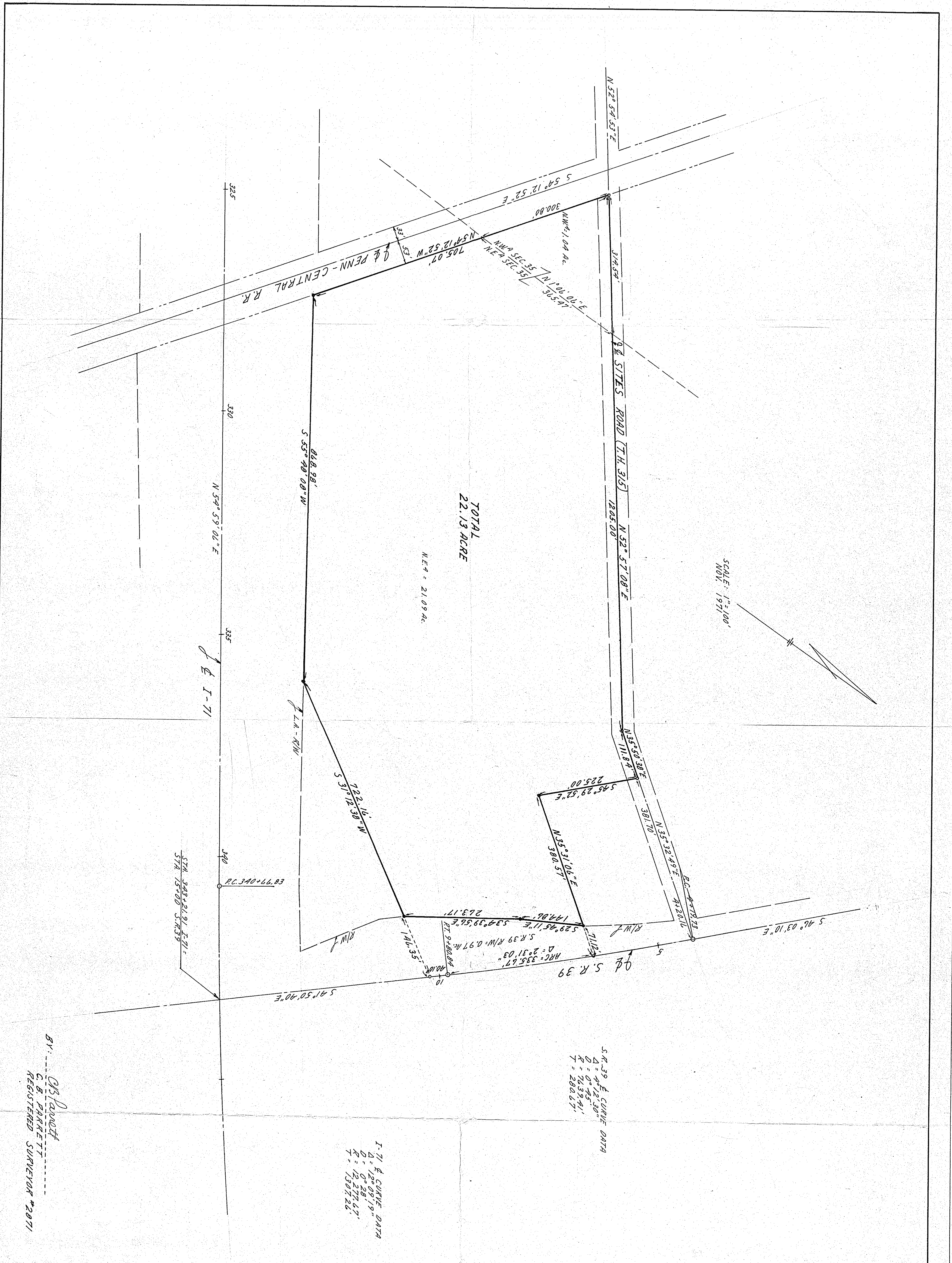


QUANTITIES	INIT.	DATE
CALCULATED		
CHECKED		
REVISED		



BY: *C.B. Parrett*
 C.B. PARRETT
 REGISTERED SURVEYOR #2071

RICHLAND ENGINEERING LIMITED
 CONSULTING ENGINEERS
 OHIO

MANSFIELD

SURVEY OF A 22.13 AC. PARCEL FOR WILLIAM CALHOUN PART OF THE NE 4 & NW 9 SEC. 36 MADISON TOWNSHIP T.21-R.18 RICHLAND COUNTY, OHIO

DESIGNED	DRAWN	TRACED	CHECKED	REVIEWED	DATE	REVISION
R.F.		SK-1004				

FED. RD. DIVISION	STATE	PROJECT
2	OHIO	