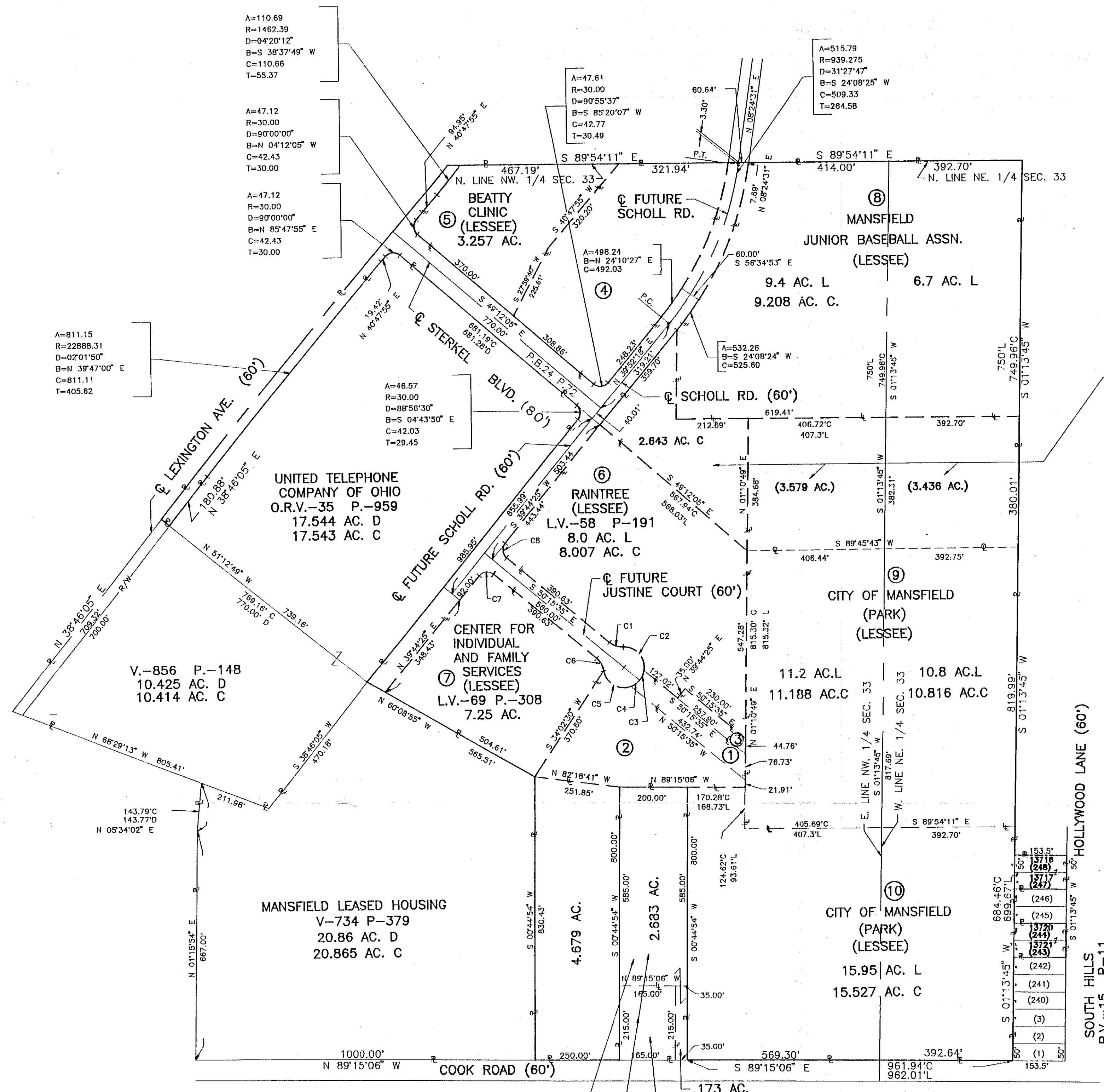


**LEGEND**  
 D - DEED  
 L - LEASE  
 C - CALCULATED  
 L.V. - LEASE LINE  
 P.L. - PROPERTY LINE  
 Q - LAND OPTION



LAND OPTION TO  
 UNITED TELEPHONE COMPANY OF OHIO  
 9.906 AC. L  
 9.658 AC. C

**LESSEES**

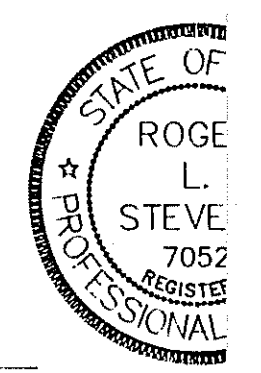
- ① CHILDREN SERVICES (LESSEE) O.R.V.-82 P-366  
0.556 AC.
- ② CHILDREN SERVICES (LESSEE) O.R.V.-82 P-405  
2.553 AC.
- ③ CHILDREN SERVICES (LESSEE)  
0.196 AC.
- ④ REHABILITATION SERVICE OF NORTH CENTRAL OHIO, INC. (LESSEE) L.V.-52 P-276  
5.291 AC. L  
5.417 AC. C
- ⑤ BEATTY CLINIC (LESSEE)  
3.257 AC.
- ⑥ RAIN TREE (LESSEE) L.V.-58 P-191  
8.0 AC. L  
8.007 AC. C
- ⑦ CENTER FOR INDIVIDUAL AND FAMILY SERVICES (LESSEE) L.V.-69 P.-308  
7.25 AC.
- ⑧ MANSFIELD JUNIOR BASEBALL ASSOCIATION (LESSEE)  
16.1 AC. L  
15.908 AC. C
- ⑨ CITY OF MANSFIELD (PARK) (LESSEE)  
22.0 AC. L  
22.004 AC. C
- ⑩ CITY OF MANSFIELD (PARK) (LESSEE)  
15.95 AC. L  
15.527 AC. C

CURVE#	RADIUS	LENGTH	CHORD	CHORD BEARING	DELTA ANGLE	TANGENT
C1	60.00'	43.36'	42.43'	N 70°57'52" W	41°24'35"	22.68'
C2	60.00'	106.20'	92.87'	N 40°57'52" W	101°24'35"	73.32'
C3	60.00'	* 31.42' C	31.06'	N 24°44'45" E	30°00'00"	16.08'
C4	60.00'	* 31.42' C	31.06'	N 54°44'25" E	30°00'00"	16.08'
C5	60.00'	106.20'	92.87'	S 59°33'18" E	101°24'35"	73.32'
C6	60.00'	43.36'	42.43'	S 29°33'18" E	41°24'35"	22.68'
C7	30.00'	47.12'	42.43'	N 84°44'25" E	90°00'00"	30.00'
C8	30.00'	47.12'	42.43'	N 05°15'35" W	90°00'00"	30.00'

\* 31.52 L

UNITED TELEPHONE CO. OF OHIO  
 (LESSEE)  
 L.V.-63 P.-795

PART OF THE NW. & NE. 1/4 OF SEC.  
 33, T-21, R-18 AND ALL OF LOTS  
 13716, 13717, 13720 & 13721 IN  
 THE CITY OF MANSFIELD, COUNTY OF  
 RICHLAND, STATE OF OHIO



*Roger L. Stevens*  
 Roger L. Stevens P.S. #7052

SHAFFER, JOHNSTON, LICHTENWALTER  
 & ASSOCIATES, INC.  
 CONSULTING ENGINEERS - SURVEYORS  
 MANSFIELD OHIO WOOSTER

**JUSTINE STERK  
 ESTATE**  
 LEXINGTON AVENUE  
 MANSFIELD, OHIO

DRAWN K.A.A.	CHECKED R.L.S.	SCALE 1" = 200'
JOB NO EM-445	SHEET 1	OF 9

Elaine,  
 Dan brought this in for you to make a map of for our files.