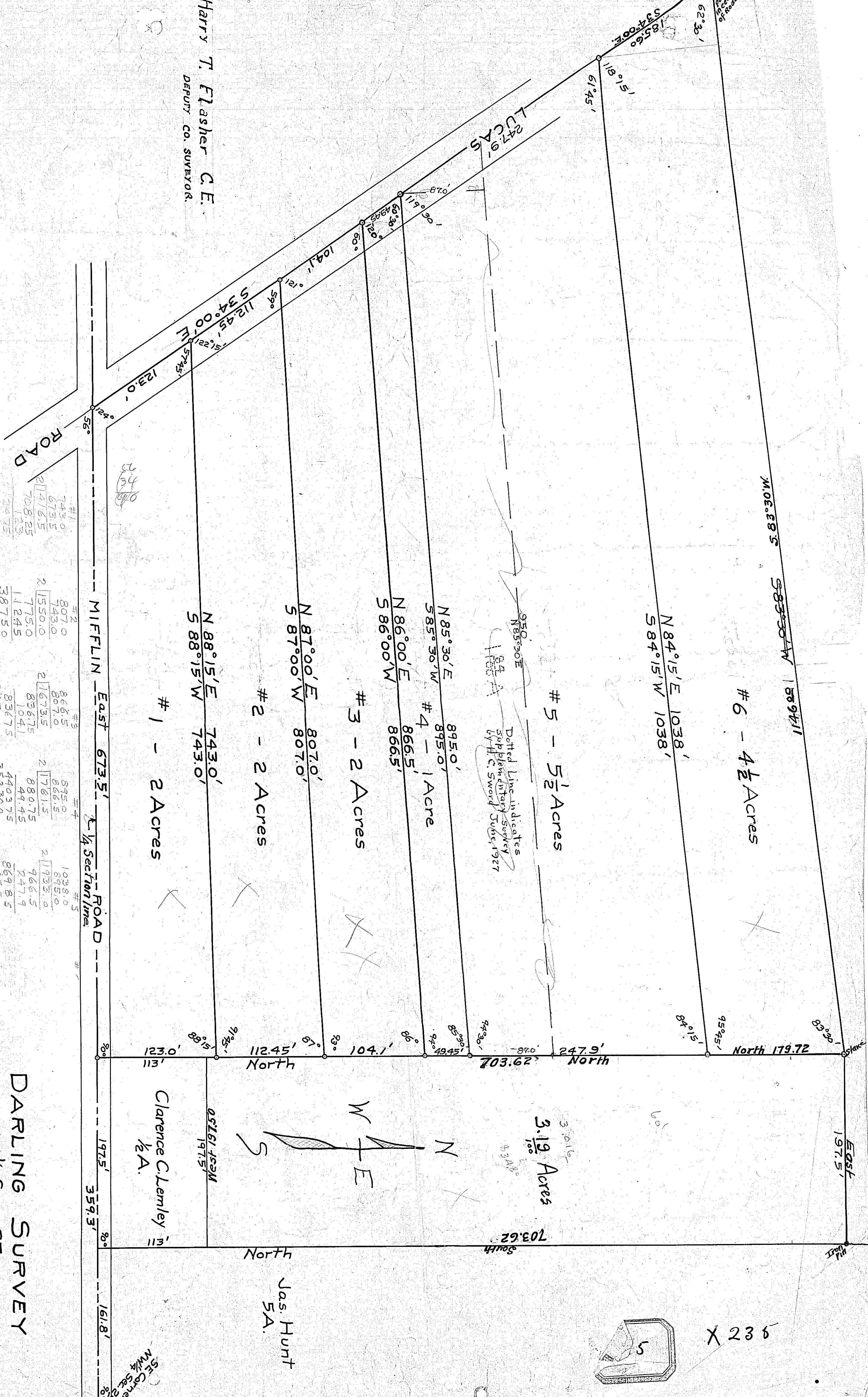


Harry T. Flasher C.E.
DEPUTY CO. SURVEYOR.



#1	#2	#3	#4	#5
745.0	807.0	866.5	875.0	1038.0
673.5	807.0	866.5	895.0	895.0
2114.65	21550.0	21673.5	21761.5	21733.0
708.25	7750	8367.5	880.75	966.5
123	11245	1041	4403.75	247.9
2475	38750	83675	352300	2698.5
4418.56	31000	334700	352300	6765.5
4497.5	7750	83675	352300	38660
87114.75	87114.75	87105.675	43553.0875	19230
				239595.55

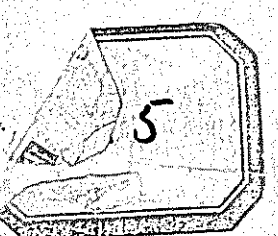
Madison Twp.

DARLING SURVEY

NW 1/4 Sec 25

Madison Tp.

235A



X 235