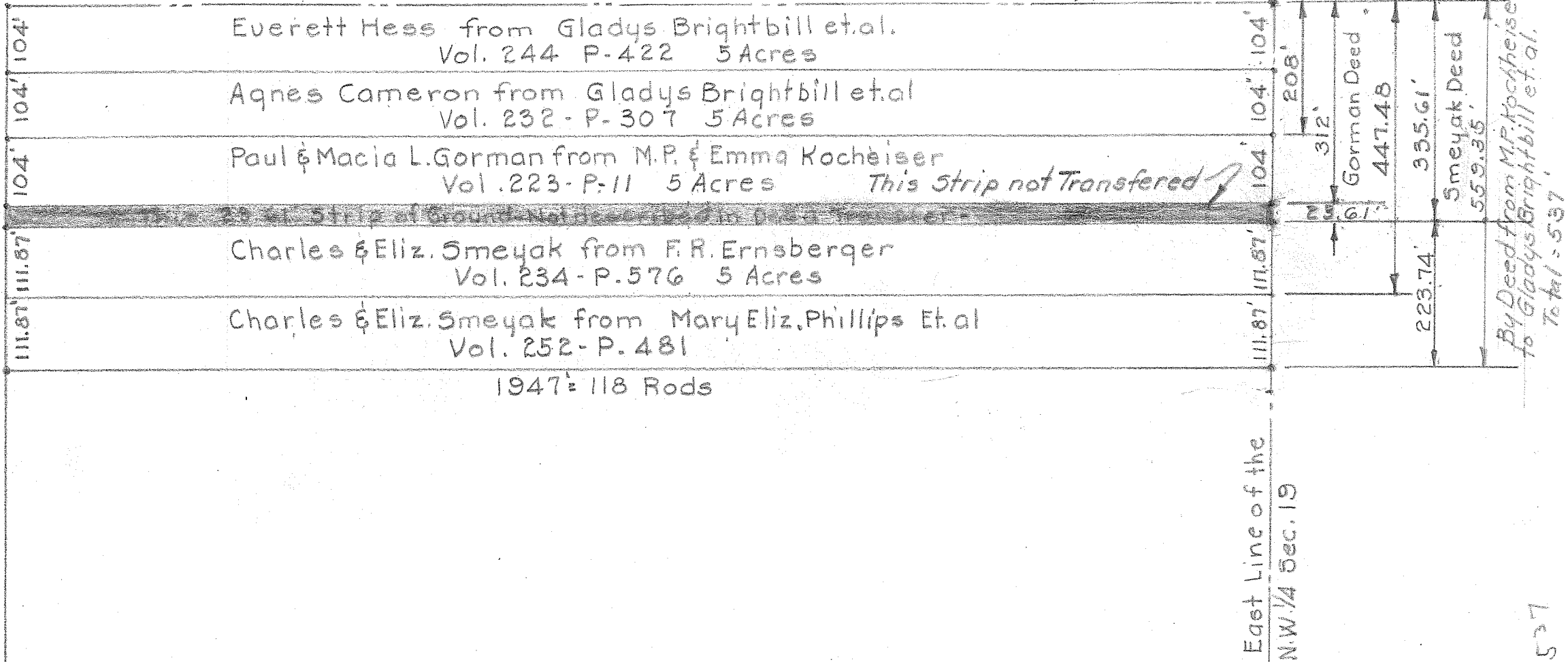


All Deed Shown are Referenced to this corner

1947' = 118 Rods North Line of N.W. 1/4 Sec. 19



Everett Hess from Gladys Brightbill et al.
Vol. 244 P-422 5 Acres

Agnes Cameron from Gladys Brightbill et al.
Vol. 232 - P-307 5 Acres

Paul & Macia L. Gorman from M.P. & Emma Kochheiser
Vol. 223 - P-11 5 Acres *This Strip not Transferred*

Charles & Eliz. Smeyak from F.R. Ernsberger
Vol. 234 - P.576 5 Acres

Charles & Eliz. Smeyak from Mary Eliz. Phillips Et al
Vol. 252 - P. 481

1947' = 118 Rods

East Line of the
N.W. 1/4 Sec. 19

By Deed from M.P. Kochheiser
to Gladys Brightbill et al.
Total: 537'