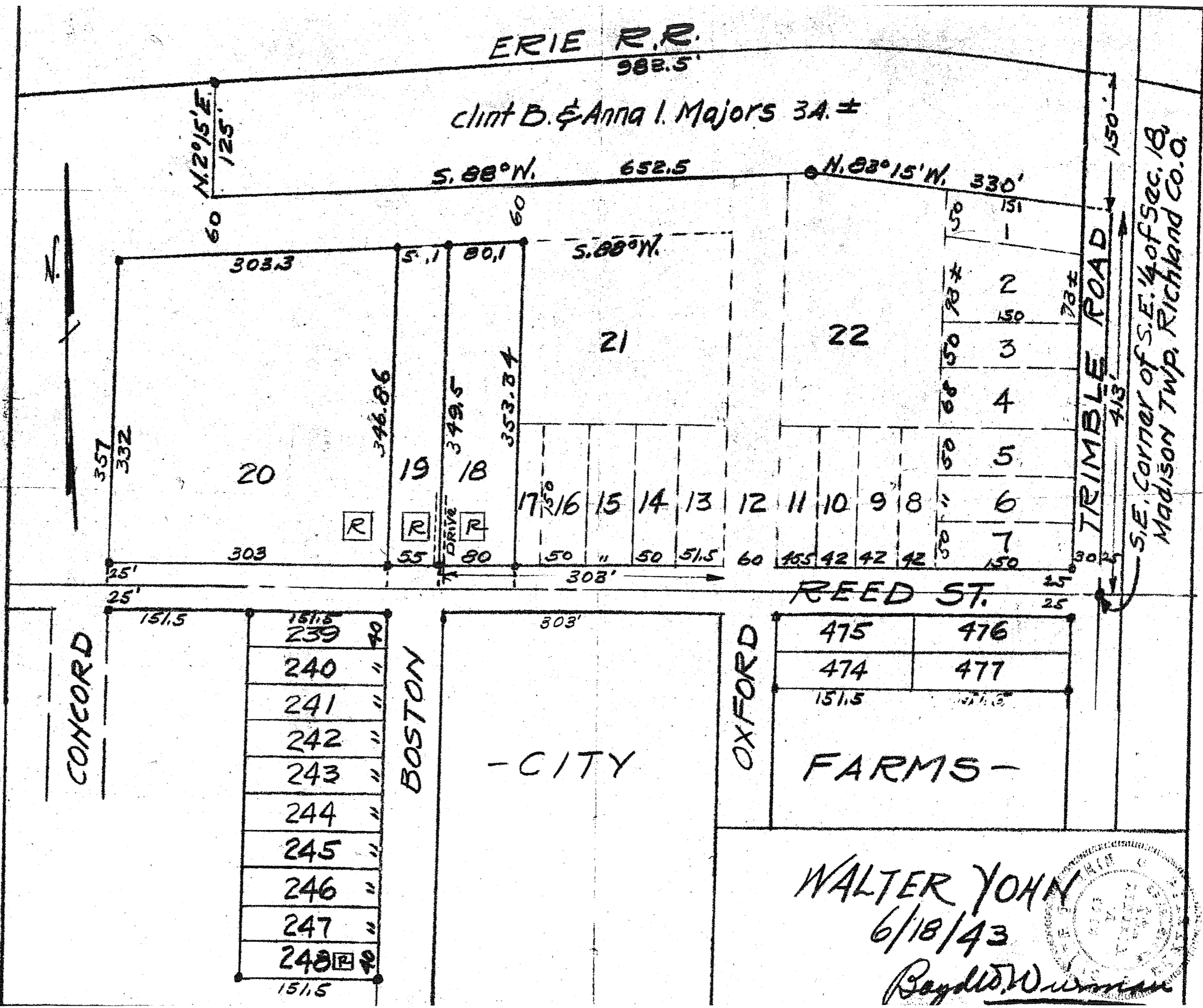


ERIE R.R.
982.5'

clint B. & Anna I. Majors 3A. ±



S. 88° W. 652.5

N. 83° 15' W. 330'

N. 20° 15' E. 125'

S. 88° W.

N

357
332

303.3

346.86

379.5

353.84

20

19

18

21

22

17 16 15 14 13 12 11 10 9 8

50 151
1
2
3
4
5
6
7
150

TRIMBLE ROAD

150'

S.E. corner of S.E. 1/4 of Sec. 18,
Madison Twp, Richland Co., O.

R

R

R

DRIVE

303

55

80

50

50

51.5

60

46.5

42

42

42

50

150

25'

308'

REED ST.

25'

CONCORD

151.5

151.5	239	40
	240	"
	241	"
	242	"
	243	"
	244	"
	245	"
	246	"
	247	"
	248	"
151.5		

BOSTON

303'

- CITY

OXFORD

475	476
474	477
151.5	151.5

FARMS -

WALTER JOHN
6/18/43

Rayld W. ...

