

S 13°45'W  
1102'

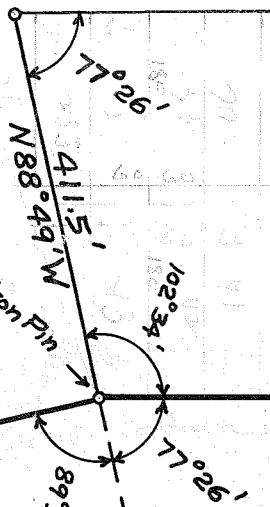
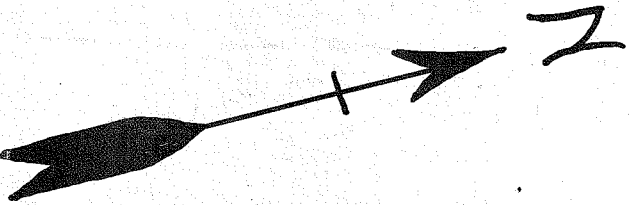
9.851 Acres

N 13°45'E  
1013.2'

8.844 Acres.

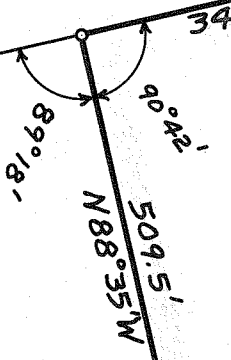
926.5'

1276.5'



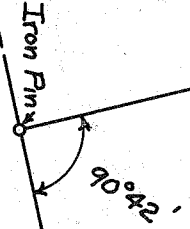
4.082 Acres

509.5'  
N 88°49'W

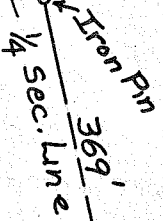


9.357 Acres

50°43'W  
800'



509.5'  
N 88°35'W



SE Corn  
NW 1/4 Sec

CARL HEDGES SURVEY

Part NW 1/4 Sec. 17

Madison TWP.

T. 21, R. 18.

March 1922

1/4 Sec. Line