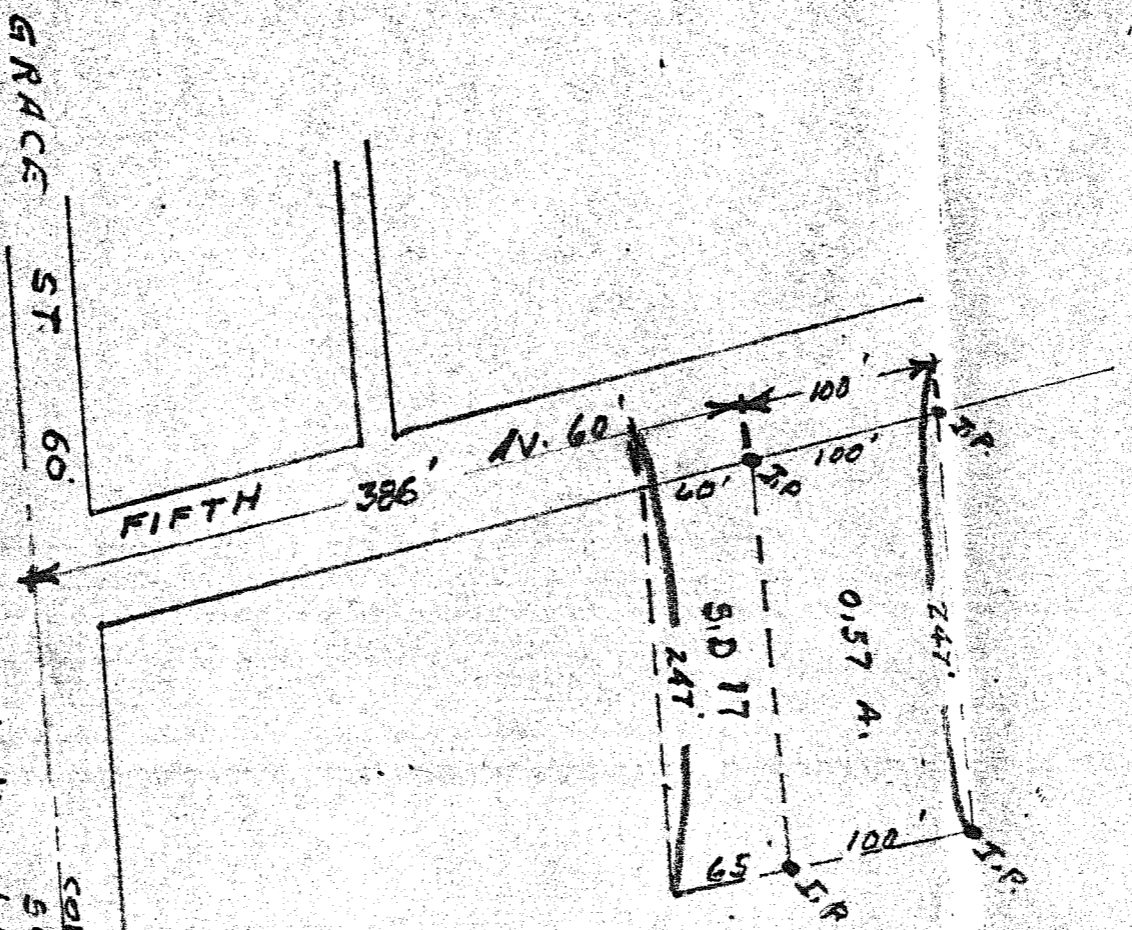


Survey of S.D. #17 Being started in the S.E. 1/4 Sec. 15
 Twp. 21-R-1E Madison Twp. Richland Co., Ohio
 Beginning at a point in the center line of 5th Av. said point
 being 386' in a northwesterly direction to a point in the center
 line of 5th Av. from the S.W. line of grade St. #1
 Thence East 247'
 Thence in a Northwesterly direction 100'
 Thence in a Northwesterly direction in the center line of 5th Av. 100' to
 Thence west 247' to a point in the center line of 100' to
 Thence in a southeasterly direction along said center line 100' to
 the place of beginning containing 0.57 A. more or less



scale 1" = 100'

I certify that the plat & notes are correct
 W. A. Brown
 Reg. Surveyor 1965

corp. line
 sec. line