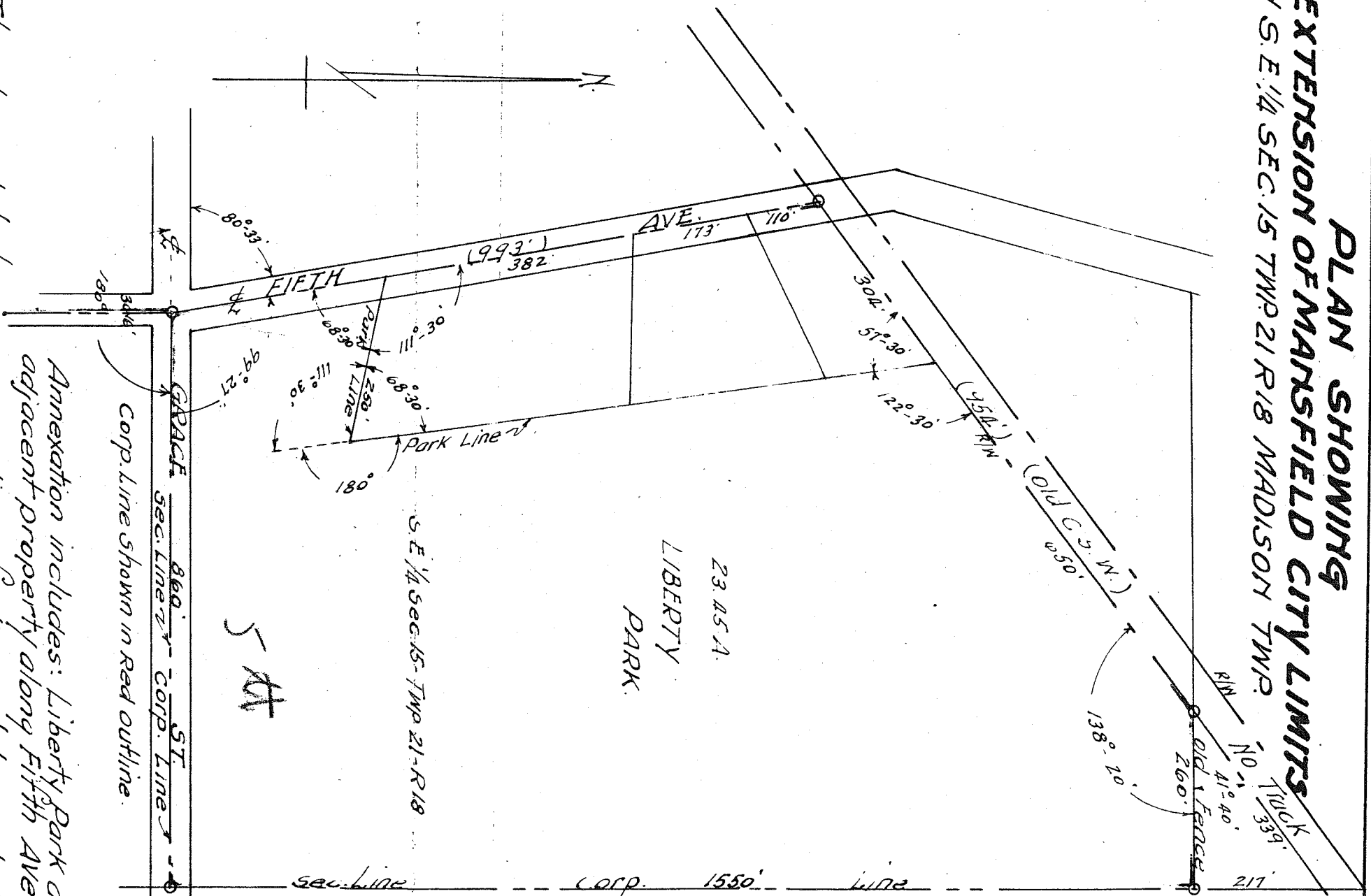


# PLAN SHOWING EXTENSION OF MANSFIELD CITY LIMITS IN S. E. 1/4 SEC. 15 TWP. 21 R. 18 MADISON TWP.



Annexation includes: Liberty Park and adjacent property along Fifth Ave.

The above plat showing annexation of adjacent lands to the City of Mansfield, Ohio was approved and signed by the Richland County Commissioners and became effective Dec. 17th. 1941. Situated in the S. E. 1/4 Sec. 15 Twp. 21 - R. 18 containing 27.87 A. The above plat for Recording approved by                      at                      Back.

The above plat for Recording approved by City Engineer - Jan. 4<sup>th</sup> 1943.  
 Transferred:                      1943.                      County Auditor.  
 Received for Record at                      Jan.                      1943.  
 Recorded                      1943                      County Recorder.  
 Recorded in Vol. #                      Page #                      (Plat Book)

Mansfield City Council Record: - Ordinance #41-97 Vol. L. Page 115 Passed June 3 - 1941.  
 Howard G. Miller - President of Council  
 Wm. J. Locke - Mayor

Richland County Commissioners Record: - Commissioners Journal #25 Page 529 & 530. Dec. 17th. 1941.  
 C. L. Mitchell - Chairman of Board.  
 P. S. Carroll - Clerk of Board.