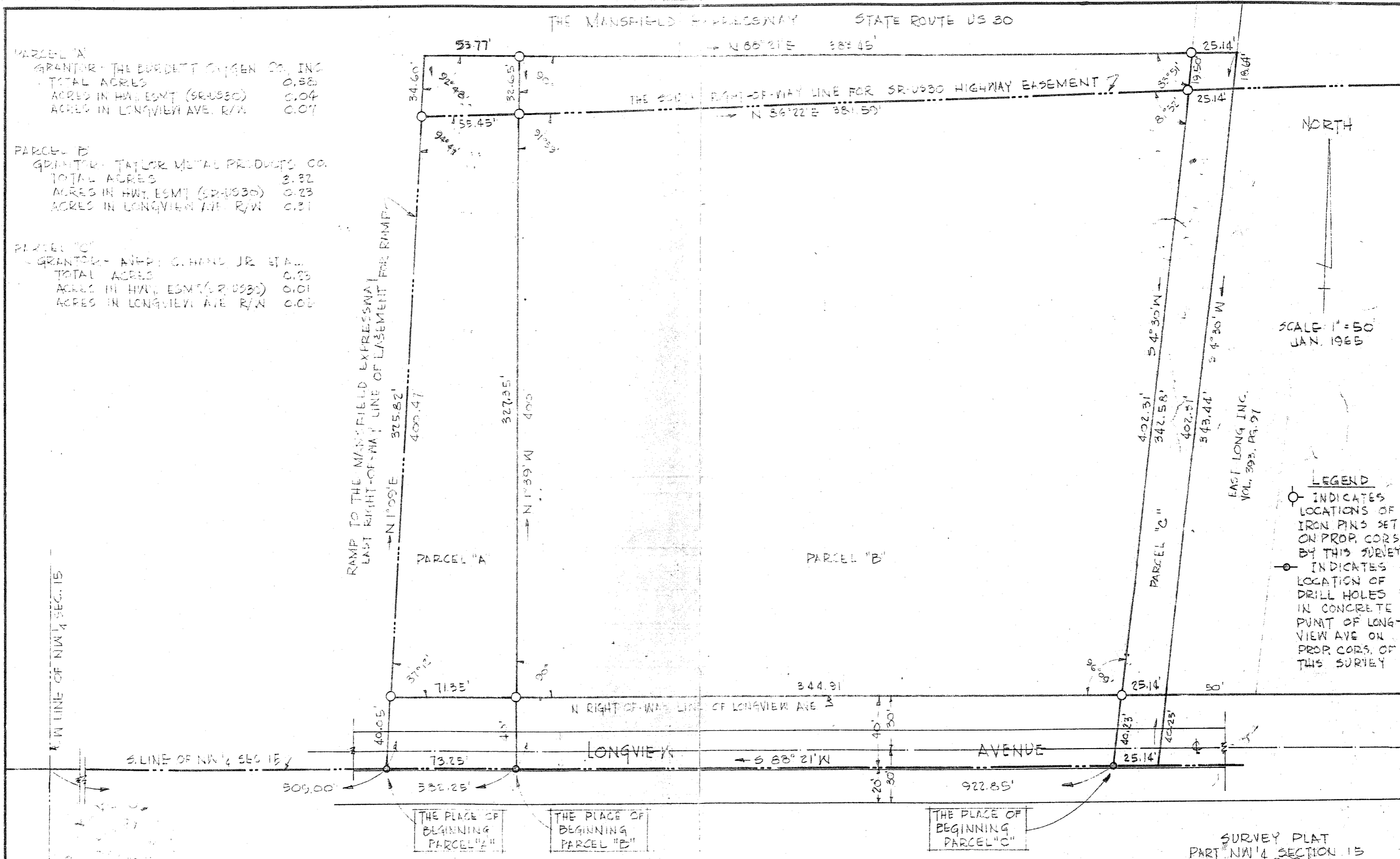


THE MANSFIELD EXPRESSWAY STATE ROUTE US 30

PARCEL "A"
 GRANTOR - THE BURDETT OIL & GAS CO., INC.
 TOTAL ACRES 0.58
 ACRES IN HWT. ESMT (SR-US30) 0.04
 ACRES IN LONGVIEW AVE. R/W 0.07

PARCEL "B"
 GRANTOR - TAYLOR METAL PRODUCTS CO.
 TOTAL ACRES 3.32
 ACRES IN HWT. ESMT (SR-US30) 0.23
 ACRES IN LONGVIEW AVE. R/W 0.31

PARCEL "C"
 GRANTOR - WERTZ, C. H. AND JR. ET AL.
 TOTAL ACRES 0.23
 ACRES IN HWT. ESMT (SR-US30) 0.01
 ACRES IN LONGVIEW AVE. R/W 0.02



NORTH
 SCALE: 1" = 50'
 JAN. 1965

LEGEND
 ○ INDICATES LOCATIONS OF IRON PINS SET ON PROP. CORRS BY THIS SURVEY
 ● INDICATES LOCATION OF DRILL HOLES IN CONCRETE POINT OF LONGVIEW AVE ON PROP. CORRS. OF THIS SURVEY

SURVEY PLAT
 PART NW 1/4 SECTION 15
 MADISON TOWNSHIP
 CITY OF MANSFIELD, OHIO

JUSTIN A. SELLER
 1-15-65
 SURVEY BY JUSTIN A. SELLER DATE
 PLAN SURVEY FOR #4421